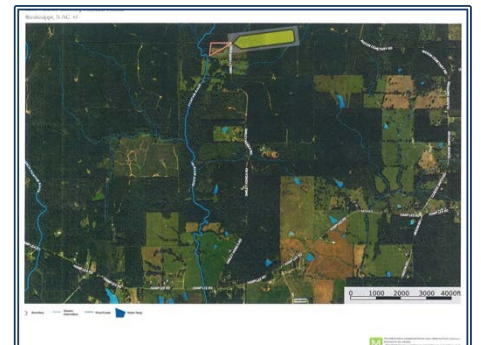




Ideally located in Summit, MS and just north of the McComb city limits, this excellent commercial property has been utilized as a pharmacy and medical services location, but has multi-use opportunities for both the end user and investor! The building boasts 8,157 square feet with climate control provided by four highly energy-efficient Trane HVACs. The floor plan includes spacious retail space and multi-functional offices. While the building faces Hwy 98 & 51, additional ingress and egress is provided by Sid Nash Road. Off-street parking includes 36 spaces in front and on the north side. Plus, a drive-through window is located on the south side of the building. An impressive stand-alone electronic sign system is ideally located at the Hwy 98 & 51 entrance! This is an extremely well-constructed building designed for low maintenance in a great location! Don't delay! Call today!

1121 Hwy 98 & 51, Summit, MS

31.271925, -90.471952 GPS



\$2,400,000

0.72± Acres
8157 SF
MLS #144571



Stuart Hemphill
stuarthemphill58@gmail.com
Office: (601) 250-0017
Cell: (601) 248-7637
SouthernStatesRealty.com