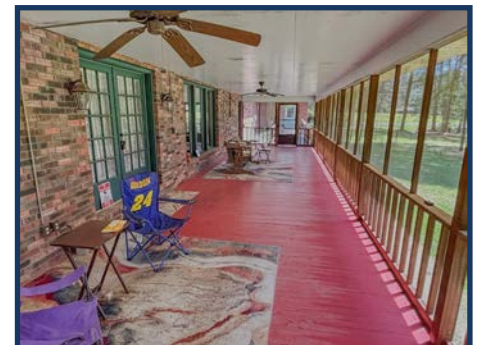




4BR 2.5 BA home for sale with over 3000 sqft of living area, huge screened in back porch, all situated on 2.9 acres with pond. This home is located just west of McComb in the Pinehurst subdivision of features a large kitchen with corian countertops, formal dining room, den with fireplace, a formal dining area and a detached two car garage with opener. There is also a large workshop area within the house that was the original garage. Call today to make this house home.

1123 Hawthorne Drive, McComb, MS

31.205835, -90.498910 GPS



\$259,500

4 Bed/2.5 Bath
2.9± Acres
MLS #144557



Scott Campbell
scottcampbell050@gmail.com
Office: (601) 250-0017
Cell: (601) 248-4595
SouthernStatesRealty.com