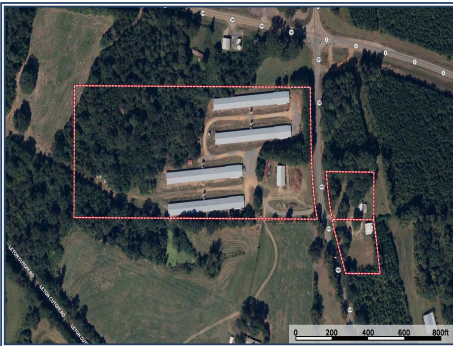




Looking for a proven income-producing poultry operation? This breeder farm is ready to go to work. It includes (4) 40' x 400' poultry houses, originally built in 1991 and fully updated in 2024. The farm is under contract with one of the nation's top poultry companies, providing stable, consistent income. Each house is equipped with Choretime feeders, Lubing drinkers, Choretronics controllers, and Valco egg tables with double belts. A Farm Alarm system adds peace of mind. Ventilation and cooling are built for efficiency with (8) 54" fans per house, 75' cool cells on the north side, and 50' cool cells on the south. A large egg room with cooling units is in place for daily operations. There are (2) litter/compost sheds; one is a brand new 40'x100' shed and the older shed is 40'x75'. This farm has a 100KW John Deere generator for reliable backup power, and water is supplied by a 5HP well with a city water backup—keeping operations running no matter what. Also included is a 2-bedroom, 1.5-bath home on-site. Whether you're expanding your current operation or entering the poultry industry, this is a turnkey opportunity with strong income. Contact us today for details or a private showing!

9473 Highway 159, Shongaloo, LA

32.865614, -92.256460 GPS



**\$1,100,000**

**4 House Breeder  
Farm  
16.93± Acres**



**Josh Beckham**  
beckhamjosh5@gmail.com  
Office: (601) 250-0017  
Cell: (318) 548-6377  
SouthernStatesRealty.com