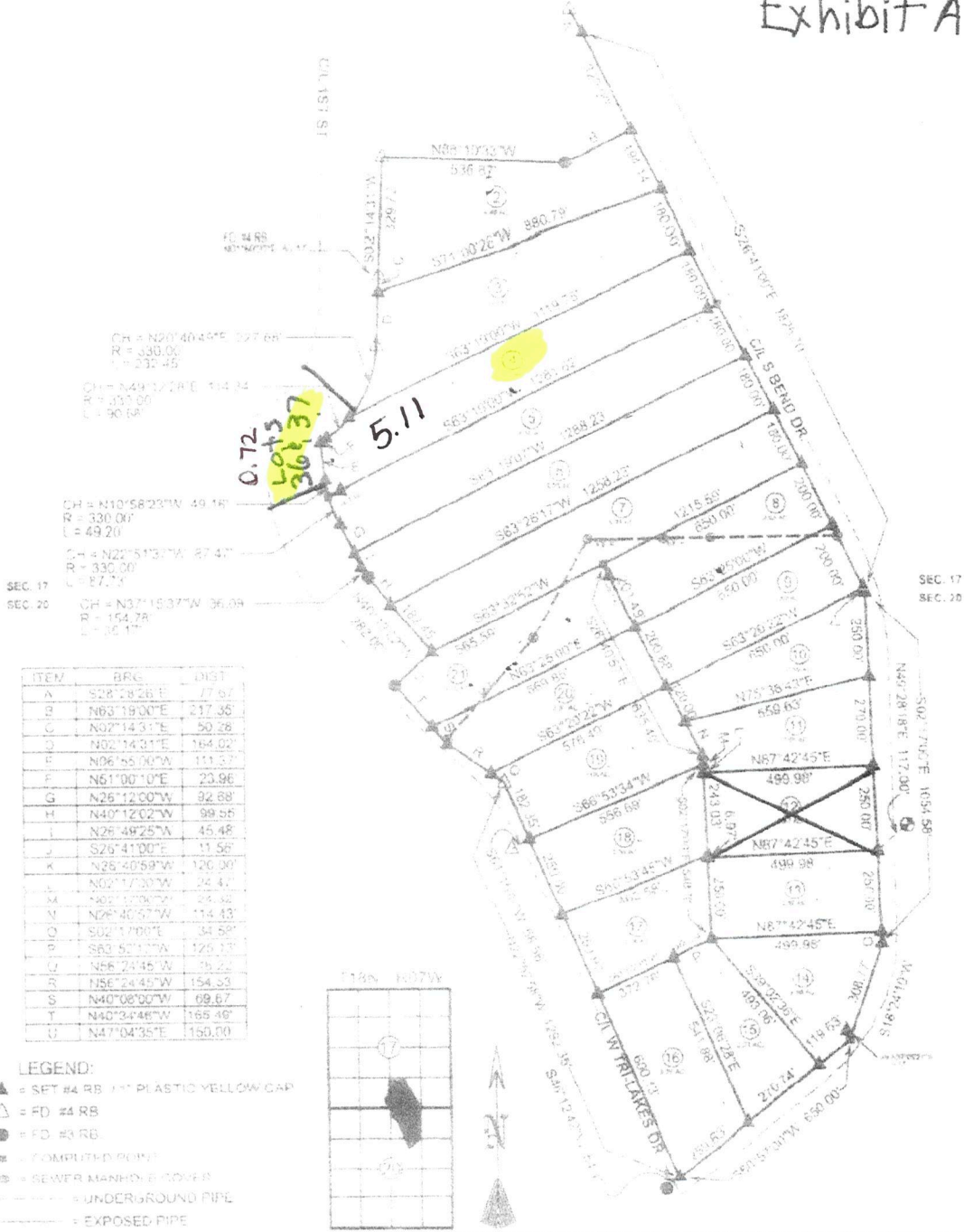


SURVEY DESCRIPTION

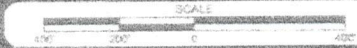
LOTS 2 THRU 21 OF CROWN LAKE ESTATES, (WARD COUNTY, ARKANSAS), CONTAINING 70.22 ACRES.

Exhibit "A"



- LEGEND:**
- ▲ = SET #4 RB 1" PLASTIC YELLOW CAP
 - △ = FD #4 RB
 - = FD #3 RB
 - = COMPUTED POINT
 - ⊗ = SEWER MANHOLE COVER
 - — — = UNDERGROUND PIPE
 - — — = EXPOSED PIPE

STATE LAND SURVEYORS CODE:
500-184-07W-0-17-203-33-1268 500-184-07W-020-104-33-1268



STATE FILING RECORDS

COUNTY FILING RECORDS

STRIDER CONSULTING
STRIDER CONSULTING
42 South College St.
Mountain Home, AR 72561
870-424-4232

PROFESSIONAL SURVEYOR
STATE OF ARKANSAS
No. 1268
JERRY A. POSE

CERTIFICATE OF AUTHORIZATION
STRIDER CONSULTING INC
08/23/2024
ARKANSAS

SURVEY FOR: CROWN LAKE RESORT		DRAWN BY: K.A.H.	DATE: 08/23/2024
BASIS OF BEARINGS: GPS		SCALE: 1" = 400'	JOB #: 24-0101
REFERENCE: BK 2 P. 17 BK 10 PG. 17		FIELD CREW: H.S.	SHEET: 1 OF 1