



**Hawkeye Farm
Mgmt & Real Estate**

Appanoose County Combination Farm For Sale 230th Avenue, Centerville, IA 52544

Price: \$675,000

Acres: 125 +/-

Price/Acre: \$5,400







PROPERTY DETAILS

- Hay/Pasture/Crop Unit
- High-Quality Habitat
- Hunting Opportunities
- 2 Ponds
- Multiple Pinch Points & Natural Funnels
- Potential to Add Strategic Food Plots
- Premier Recreational Farm
- Annual Taxes \$1,522

CONTACT US



**Hawkeye
Farm Mgmt &
Real Estate**

 (641) 932-7796
 Hawkeye@UCIowa.com
 www.UCIowa.com
 1010 S Clinton
Albia, IA 52531



RYAN AMMONS
(641) 777- 2955

Ryan@UCIowa.com



NATE AMMONS
(641) 777-2861

Nate@UCIowa.com



Ryan Ammons, Broker, Licensed in Iowa. Alan Ammons, Broker Associate, Licensed in Iowa & Missouri. All Agents Licensed in Iowa. The above information, although believed to be accurate, is not warranted or guaranteed by the owner, listing firm, or listing agent.

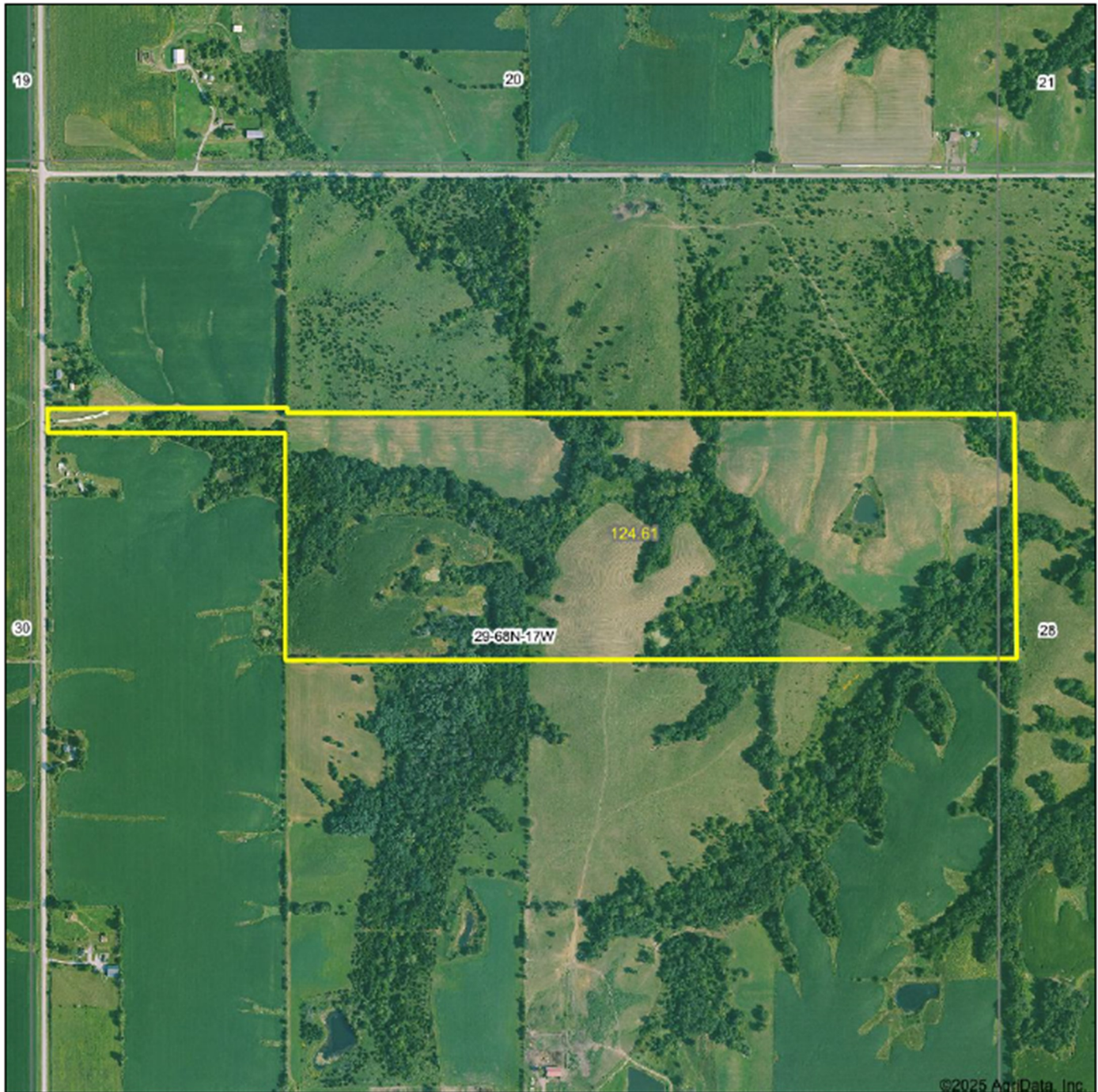
PROPERTY MAP



**Hawkeye
Farm Mgmt &
Real Estate**

Aerial Map

Boundary Lines are Approximate



Hawkeye Farm Mgmt & Real Estate



22 N Main, Albia IA Phone: 641-933-7796
Email: hawkeyefarm@hawkeyerealestate.com
On the web: www.hawkeyerealestate.com

Boundary Center: 40° 39' 42.54, -92° 50' 17.89

0ft 841ft 1682ft

**29-68N-17W
Appanoose County
Iowa**



Maps Provided By:



2/21/2025