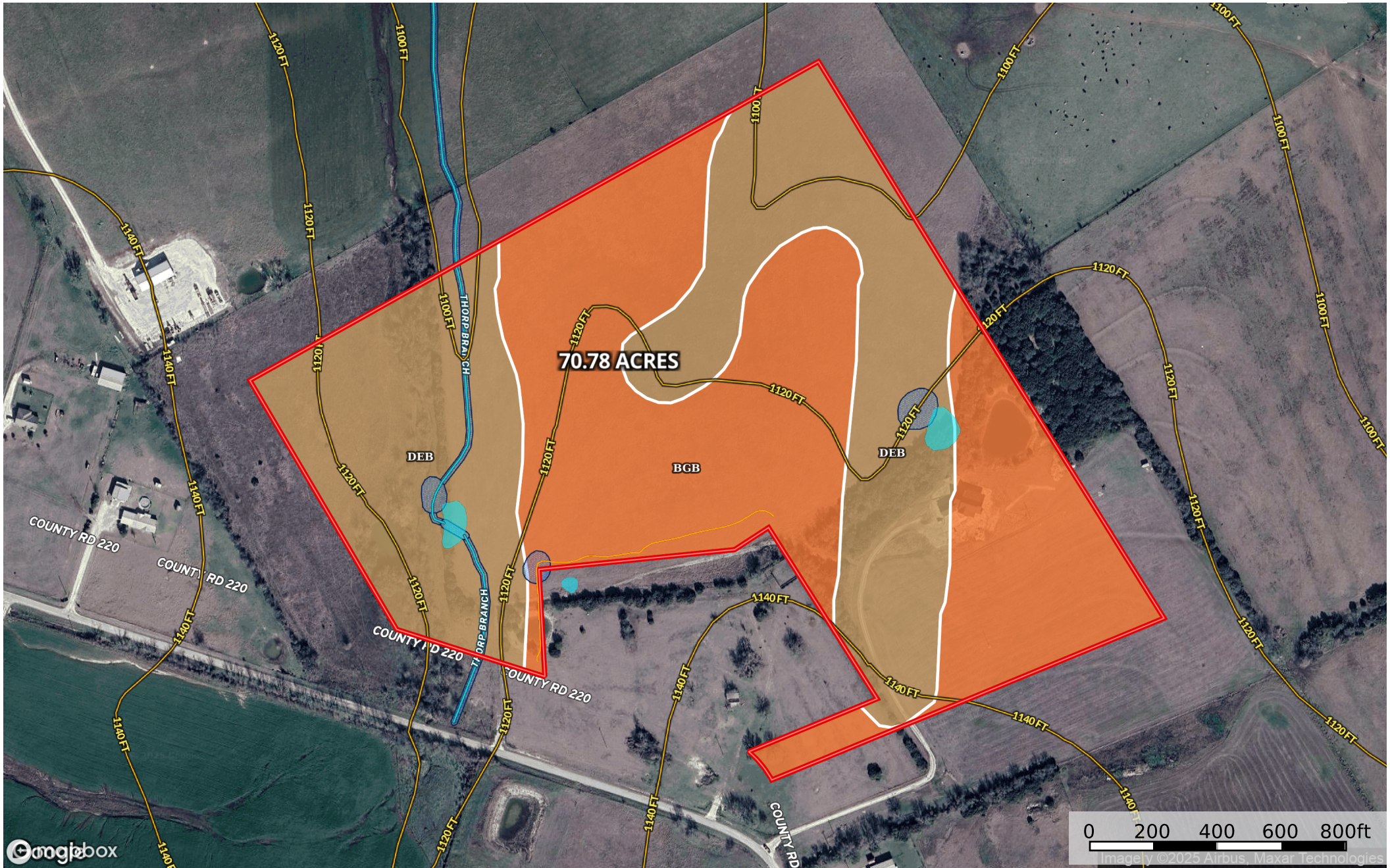


Roberts -4321 & 4183 CR 220 (70.78 Acres)  
Coryell County, Texas, 70.78 AC +/-



|  Boundary 70.83 ac

SOIL CODE	SOIL DESCRIPTION	ACRES	%	CPI	NCCPI	CAP
BgB	Bolar gravelly clay loam, 1 to 4 percent slopes	36.27	51.21	0	38	3e
DeB	Denton silty clay, 1 to 3 percent slopes	34.56	48.8	0	43	3e
TOTALS		70.83(*)	100%	-	40.45	3.0









(\*) Total acres may differ in the second decimal compared to the sum of each acreage soil. This is due to a round error because we only show the acres of each soil with two decimal.

## Capability Legend

Increased Limitations and Hazards

Decreased Adaptability and Freedom of Choice Users

Land, Capability

								
	1	2	3	4	5	6	7	8
'Wild Life'	•	•	•	•	•	•	•	•
Forestry	•	•	•	•	•	•	•	
Limited	•	•	•	•	•	•	•	
Moderate	•	•	•	•	•	•		
Intense	•	•	•	•	•			
Limited	•	•	•	•				
Moderate	•	•	•					
Intense	•	•						
Very Intense	•							

## Grazing Cultivation

(c) climatic limitations (e) susceptibility to erosion

(s) soil limitations within the rooting zone (w) excess of water