

Corrected
1321.53
J. W. V.
Attorney
5-30-84

U.S. HWY 65

685.0

EASEMENT

3.08 Ac.±

PURDY PROP.

DRIVE
S30°03'40"W
167.87

DOGWOOD
LINE

S32°10'05"W
332.93

TRACK

3.05 Ac.±

3.05 Ac.±

N 82°44'35"E
183.47

S12°56'25"E
59.10

S58°16'30"E
189.14

N 05°30'25"W
423.72

S 87°27'25"E
138.17

N 77°40'E
85.31

N 38°15'05"E
102.62

LINE

SETBACK

UTILITY EASEMENT
70.00

N 18°05'55"E
81.62

25 FOOT

4.82 Ac.

4.67 Ac.

COX PROP.

S 81°23'25"E
574.90

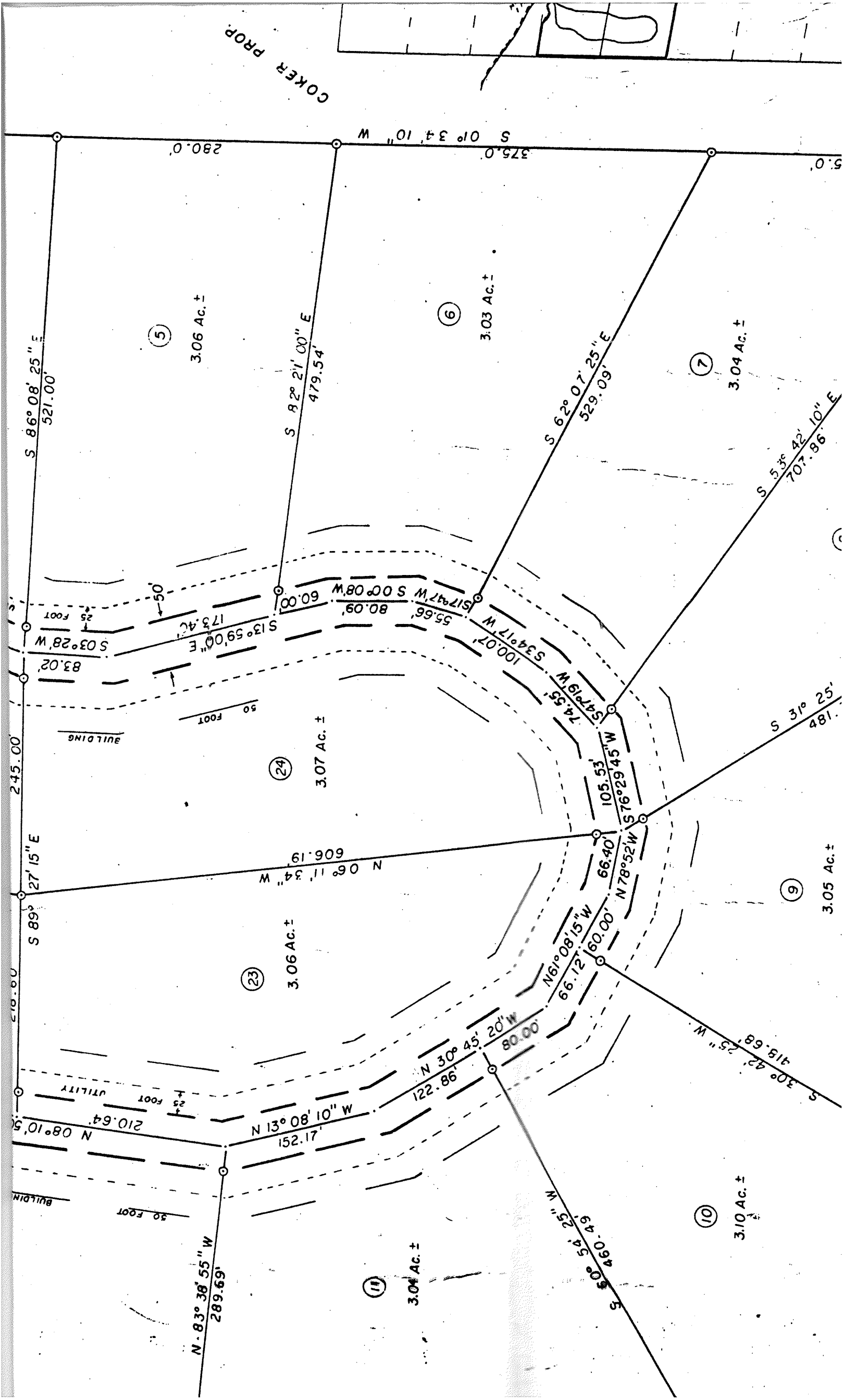
N 43°27'40"W
764.62

N 60°10'20"W
472.62

100.0

531.55

N 0°14'10"E



COKE PROP.

5

3.06 Ac. ±

6

3.03 Ac. ±

7

3.04 Ac. ±

24

3.07 Ac. ±

23

3.06 Ac. ±

9

3.05 Ac. ±

10

3.10 Ac. ±

11

3.04 Ac. ±

Boundary bearings and distances (clockwise from top-left):

- S 86° 08' 25" E 521.00'
- S 01° 34' 10" W 375.0'
- S 82° 21' 00" E 479.54'
- S 62° 07' 25" E 529.09'
- S 53° 42' 10" E 707.96'
- S 31° 25' 48.1'
- S 30° 42' 25" W 315.68'
- S 08° 10' 5" N 210.64'
- N 06° 11' 34" W 606.19'
- N 13° 08' 10" W 152.17'
- N 30° 45' 20" W 80.00'
- N 61° 08' 15" W 66.12'
- N 78° 52' W 66.40'
- S 76° 29' 45" W 105.53'
- S 47° 19' W 74.55'
- S 34° 17' W 100.07'
- S 17° 47' W 55.66'
- S 00° 08' W 80.09'
- S 13° 59' 00" E 173.40'
- S 03° 28' W 83.02'
- N 83° 38' 55" W 289.69'
- S 08° 54' 25" W 460.49'

Setbacks and other features:

- 50 FOOT (multiple locations)
- 25 FOOT (multiple locations)
- BUILDING (multiple locations)
- UTILITY (multiple locations)

