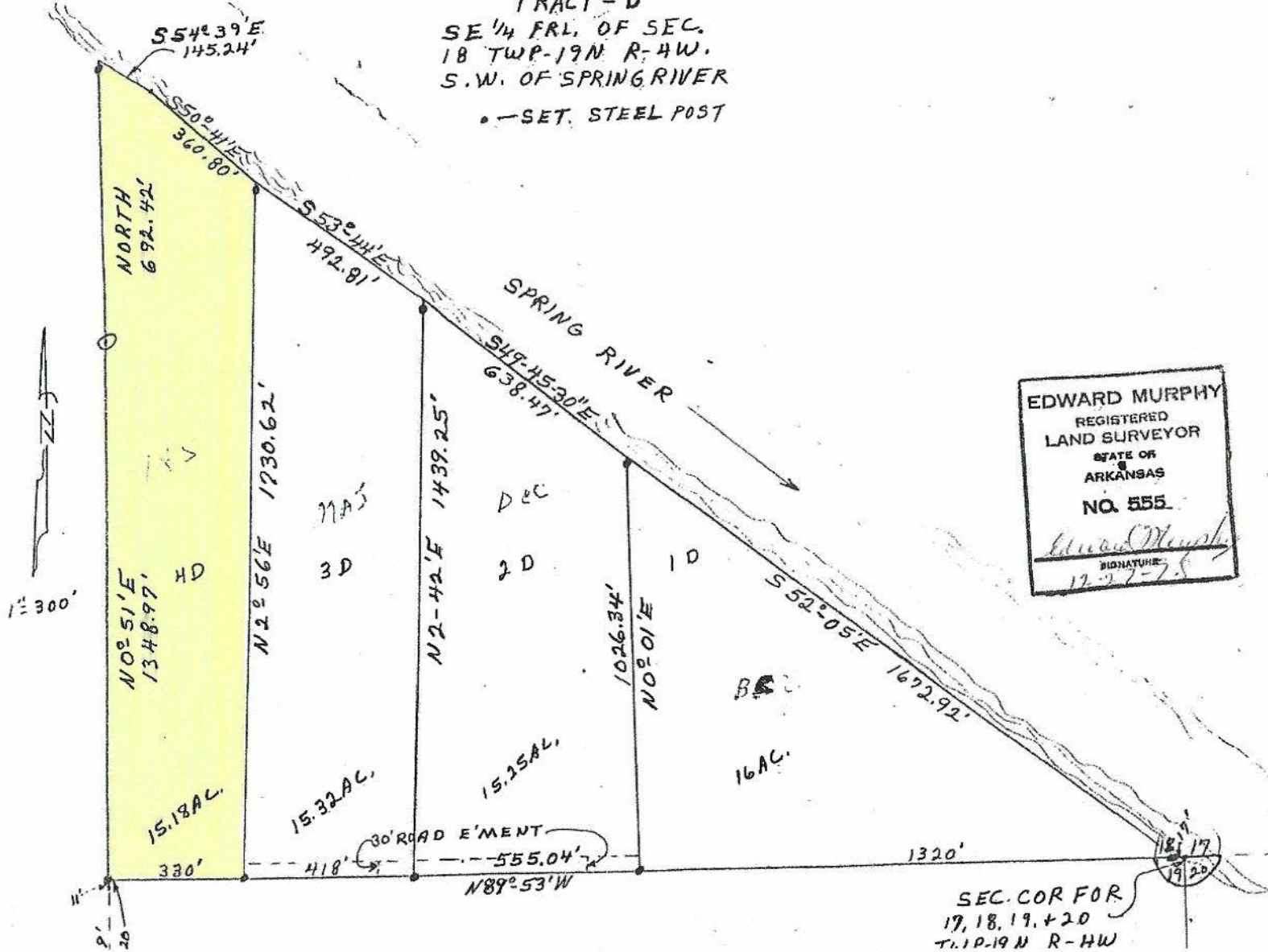


For Informational Purposes Only

"TRACT - D"  
SE 1/4 FRL. OF SEC.  
18 TWP-19N R-4W.  
S.W. OF SPRING RIVER  
• - SET. STEEL POST



EDWARD MURPHY  
REGISTERED  
LAND SURVEYOR  
STATE OF  
ARKANSAS  
NO. 555  
Signature: Edward Murphy  
12-27-78

FILED

JUL 18 1979

CLAUDIA CARVER, CLERK  
By *Walter Talley*, D.C.  
Book 8 Page 132

A-278A