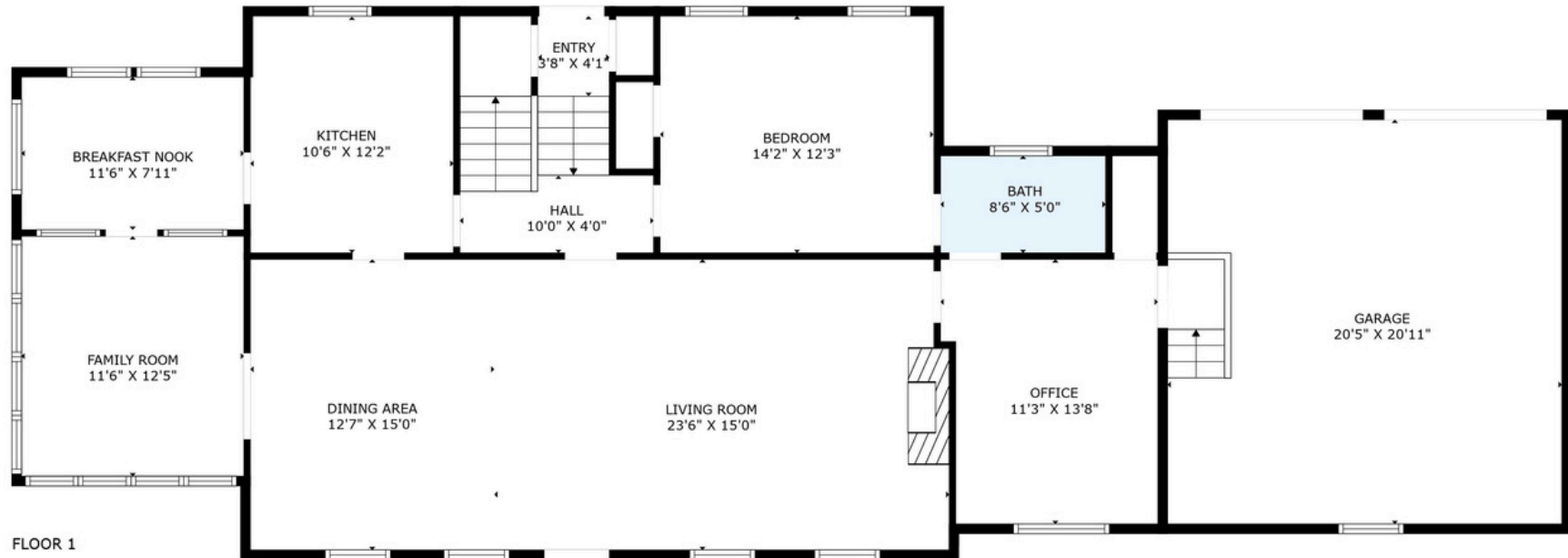


FLOOR 2



FLOOR 1

607 3RD STREET, CHERAW, SC 29520

TOTAL: 2221 sq. ft

FLOOR 1: 1441 sq. ft, FLOOR 2: 780 sq. ft

EXCLUDED AREAS: GARAGE: 425 sq. ft, LOW CEILING: 349 sq. ft, ATTIC: 356 sq. ft