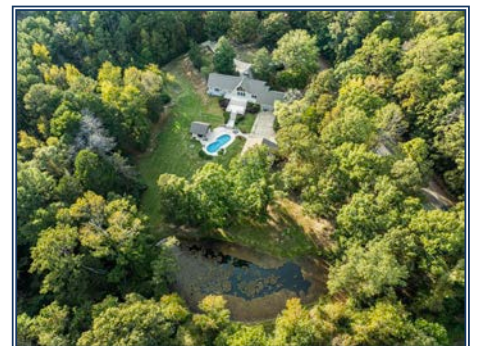
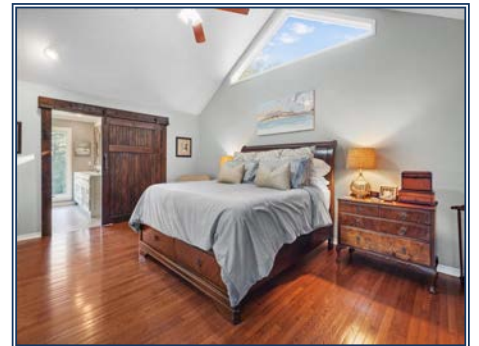




Discover a lodge-inspired 4-bedroom retreat on 3.4 meticulously maintained acres in a refined neighborhood, blending timeless architecture with modern luxury. This home features a saltwater pool with a tranquil fountain, travertine deck, outdoor pavilion with a full kitchen, fire pit, and serene pond surrounded by mature trees. Inside, soaring cathedral ceilings, floor-to-ceiling windows, and a gas-log fireplace create an upscale yet relaxed ambiance, with French doors leading to the stunning backyard. The primary suite offers a spa-like escape with a marble en suite, glass walk-in shower, floor-length windows, and a spacious walk-in closet. The bright kitchen includes a central island and peek-through to the dining room, while a versatile downstairs den opens to a 3-car detached garage, all supported by a whole-house generator. Perfectly situated near Percy Quin State Park, Fernwood Country Club, and I-55, this home offers outdoor adventures, dining, and convenience, just 1.5 hours from New Orleans—ideal for a primary residence, second home, or retirement retreat.

1018 Benjamin Drive, McComb, MS

31.2007467, -90.501499 GPS



\$498,000

4 Bed/2.5 Bath
3.40± Acres
MLS #143698



Kelly Parker
mkparker315@gmail.com
Office: (601) 250-0017
Cell: (601) 324-9760
SouthernStatesRealty.com