



Trey Meacham

meachamandassociatesins@gmail.com

Office: 601-250-0017

Cell: 601-622-1974

SouthernStatesRealty.com



**Southern
States Realty**

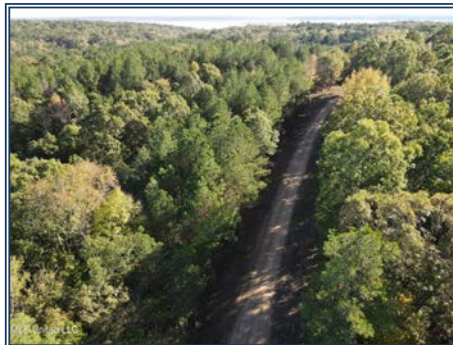
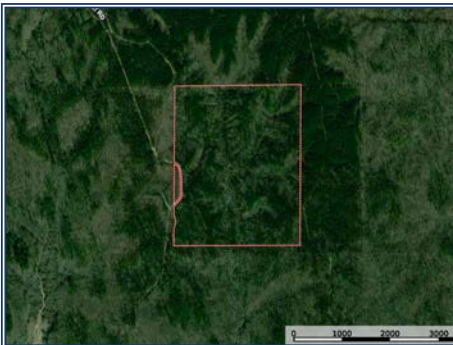


MLS United LLC

Welcome to the Carver Point 160 acre recreational, timber tract. This tract borders Carver Point State Park. The park is located on the South Boundary line and the West boundary line, which opens this property up to hundreds of additional acres for your enjoyment. Some of the best fishing in the country is done on Grenada Lake, which is directly to the West and South of this 160 acre tract. The timber is made of up pine and hardwood mix and the topography is rolling hills, which offers great drainage. Plenty of wildlife on this tract and multiple opportunities for year round use with the State Park. Plenty of home/cabin sites on these 160 acres. Please contact your favorite realtor today!

Carver Point Road, Coffeeville, MS

33.849496, -89.672879 GPS



MLS United LLC



MLS United LLC



\$456,000

**160± Acres
MLS #4097204**

