

# Crane Buchanan Pivot

157.2+/- Deeded Acres | 126.6 Acre Water Rights

Selling Oregon Farms & Ranches Since 1960

# FOR SALE





This Eastern Oregon farm features approximately 125 acres of pivot-irrigated land, supplied by two wells. It boasts an excellent location, bordered by a paved county road just 1.5 miles from Crane, Oregon. Crane is a small community offering basic amenities, including food, fuel, K-12 schools, limited groceries, and a local dining option. Burns, Oregon, is only about 30 minutes away and provides a wider range of services, including grocery stores, dining options, shopping, hospitals, and more. Additionally, the property is just a few minutes from the popular Crystal Crane Hot Springs.

With easy year-round access, this farm is well-suited for producing quality feed for a hobby farm or personal use.

The seller and his agent makes these representations in good faith, from personal knowledge and experience. However, the buyer should inspect this property or cause this property to be inspected by knowledgeable persons so that the buyer may purchase without relying upon any representations made by the seller or his agent. Also, unless otherwise specified, we, Jett Blackburn Real Estate, Inc. agents, represent the seller on any of our listings.









### Surrounding Area

Harney County, located in the expansive high deserts of rural Eastern Oregon, ranks as the 10th largest county in the United States, encompassing over 10,000 square miles. This vast area boasts diverse landscapes and abundant wildlife. At the southern tip of the county, one can marvel at the stunning vistas of Steens Mountain, which oversees the Alvord Desert & Trout Creek Mountains. The northern region features the Malheur National Forest, Silvies River, & timber country.

Wildlife abounds, ranging from large game such as elk, pronghorn, & mule deer to a variety of smaller critters and bird species typical of the Pacific Northwest. The county's primary community, Burns, is situated midway between Central Oregon & the Idaho Border. A two-hour trip to the west leads to Bend, while two hours east reaches the Idaho border and the Treasure Valley.







**Gilmore 157.2 acres Crane-Buchanan RD**  
Oregon, 157.2 AC +/-



Well Pipeline Boundary Forest Service State Land Fish and Wildlife National Park Other BLM Local Government

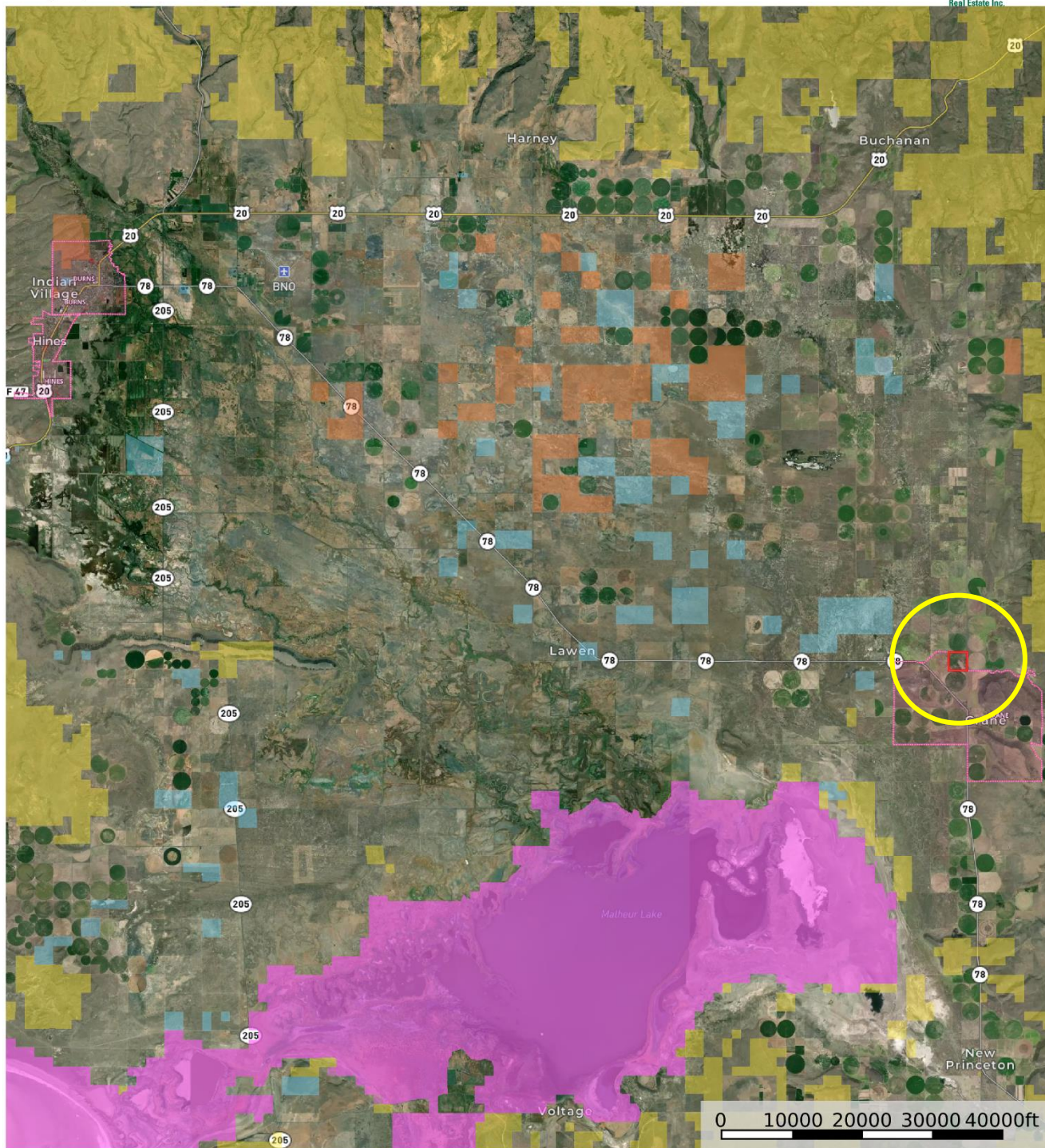
**United County Jett Blackburn Real Estate (map for illustration purposes only)**  
P: 541-413-5660    [www.jettblackburn.com](http://www.jettblackburn.com)    707 Ponderosa Village, Burns, OR 97720

**id.** The information contained herein was obtained from sources deemed to be reliable. Land id™ Services makes no warranties or guarantees as to the completeness or accuracy thereof.





**Gilmore 157.2 acres Crane-Buchanan RD**  
Oregon, 157.2 AC +/-



Boundary Forest Service State Land Fish and Wildlife National Park Other BLM Local Government

United County Jett Blackburn Real Estate (map for illustration purposes only)  
P: 541-413-5660 www.jettblackburn.com 707 Ponderosa Village, Burns, OR 97720

**id.** The information contained herein was obtained from sources deemed to be reliable. Land id™ Services makes no warranties or guarantees as to the completeness or accuracy thereof.



**LOCATION:** Approximately 30 miles southeast of Burns Oregon along the Southern portion of Crane-Buchanan Rd

**TAX LOT MAPS:** 24S33E00-00-06903

**ACREAGE:** 157.20 +/- Deeded Acres – Per County Records  
-125+/- Acres Irrigated by Pivots  
-32.2+/- Acres of Pivot Corners & Dry Land

**UTILITIES:** Power – Harney Electric Coop

**TAXES:** \$922.45

**WATER RIGHTS:**

<u>Certificate</u>	<u>Permit #</u>	<u>#Prim.</u>	<u>#Supp.</u>	<u>Priority</u>	<u>Source</u>
93211	--	126.6	--	June 27, 1990	Well
--	G-16169	--	126.6	Jan. 17, 2006	Well

**PRICE:** \$395,000.00



**United Country Jett Blackburn Real Estate**

Jett Blackburn Real Estate Inc. is an independently owned brokerage franchised under United Country. First opened in 1960, Jett Blackburn Real Estate has been the oldest standing firm in their area specializing in sales of farms, ranches, hunting properties, recreational, & more. Curt Blackburn is the current owner & principal broker of Jett Blackburn Real Estate.

United Country is a franchise-based real estate marketing company that has shown tremendous success in the real estate industry for the last 95 years. Throughout the entire United States, UC has sold over 2.8 million acres in 2022 alone, with \$9.9 billion in sales all together that covered a majority of recreational, farms, & ranches. To help make these sales possible UC has a comprehensive marketing program that includes printed advertising and special property marketing websites for farms & ranches. These marketing sites include Western Livestock Journal, Land & Farm, Capital Press, Lands of America, Farm & Ranch, Lands.com, SPG's, and much more. They are partnered with Realtree United Country Hunting Properties & UC Ranch

**Presented By**



**Curt Blackburn**

[curt@jettblackburn.com](mailto:curt@jettblackburn.com)

(541)413-5777



**Jake Blackburn**

[jake@jettblackburn.com](mailto:jake@jettblackburn.com)

(541)413-5774