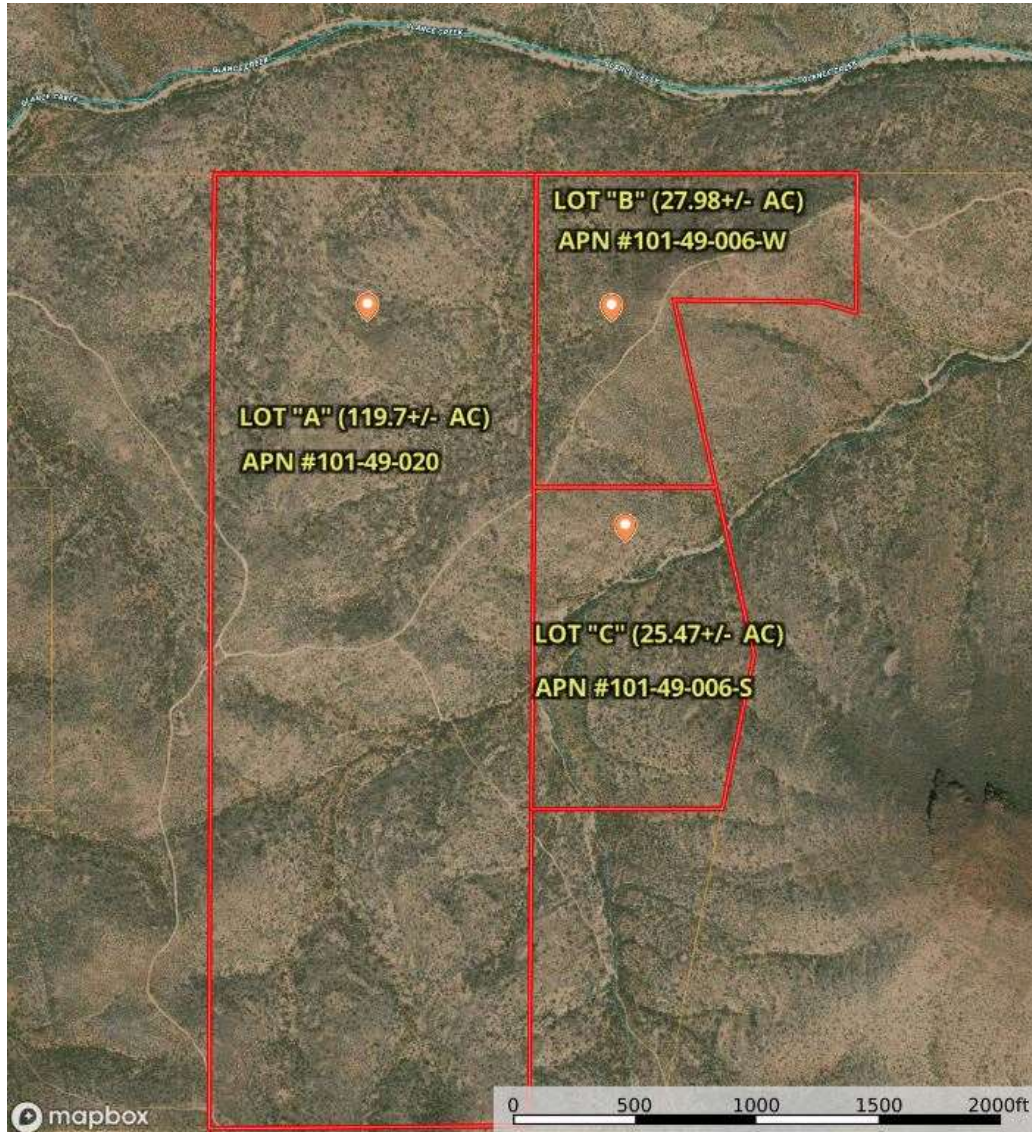


# POST AUCTION PRICING



- LOT "A": 119.7+/- acres.....**\$48,032!**
- LOT "B": 27.98+/- acres.....**\$18,788!**
- LOT "C": 25.47+/- acres.....**\$18,326!**
- Lot "A" + Lot "B" + Lot "C": 173.15+/- acres      **\$85,146!**

The online auction results were less than the selling partnership's ability to sell. However, you can take advantage of these low **Post Auction Prices** with ***Seller Financing available!*** This property was last listed at \$165,900. Own beautiful ranch land near historic Bisbee, AZ in Cochise County with panoramic mountain views and endless hiking, horseback riding, hunting, and exploring!

PROPERTY INFO AT: [AZLANDAUCTION.COM](http://AZLANDAUCTION.COM)



**Arizona  
Property  
& Auction**

John Payne, Auctioneer / Broker  
480-422-6800  
John@UnitedCountryAZ.com

**THE LARSEN COMPANY**  
REAL ESTATE AND AUCTION

Stewart Larsen, Auctioneer / Broker  
480-844-1221  
SLarsen@TheLarsenCompany.com