

22226 N. 26th Ave
R-4A (Multi-Family Residential)

C-2 SP
(Intermediate Commercial)

CP/GCP
(Commerical Park)

map services by phoenix.gov, Esri Community Maps Contributors, City of Phoenix, 745 GIS, ©
OpenStreetMap, Microsoft, Esri, TerraStar, Garmin, GeoGraphix, GeoTechnologies, Inc., MET/MESA,
USGS, Bureau of Land Management, EPA, MFS, US Census Bureau, USDA, USFWS, Google Earth, Airbus
DS, USGS, NASA, EGIAR, N. Ashburn, N. H. AS, N. S. GS, MIA, GeoDataIntelligence, Fiksworld, Inc.,
Geo, GeoData, FEMA, Intermap and the GIS User community



0 0 0 mi

My Community Map

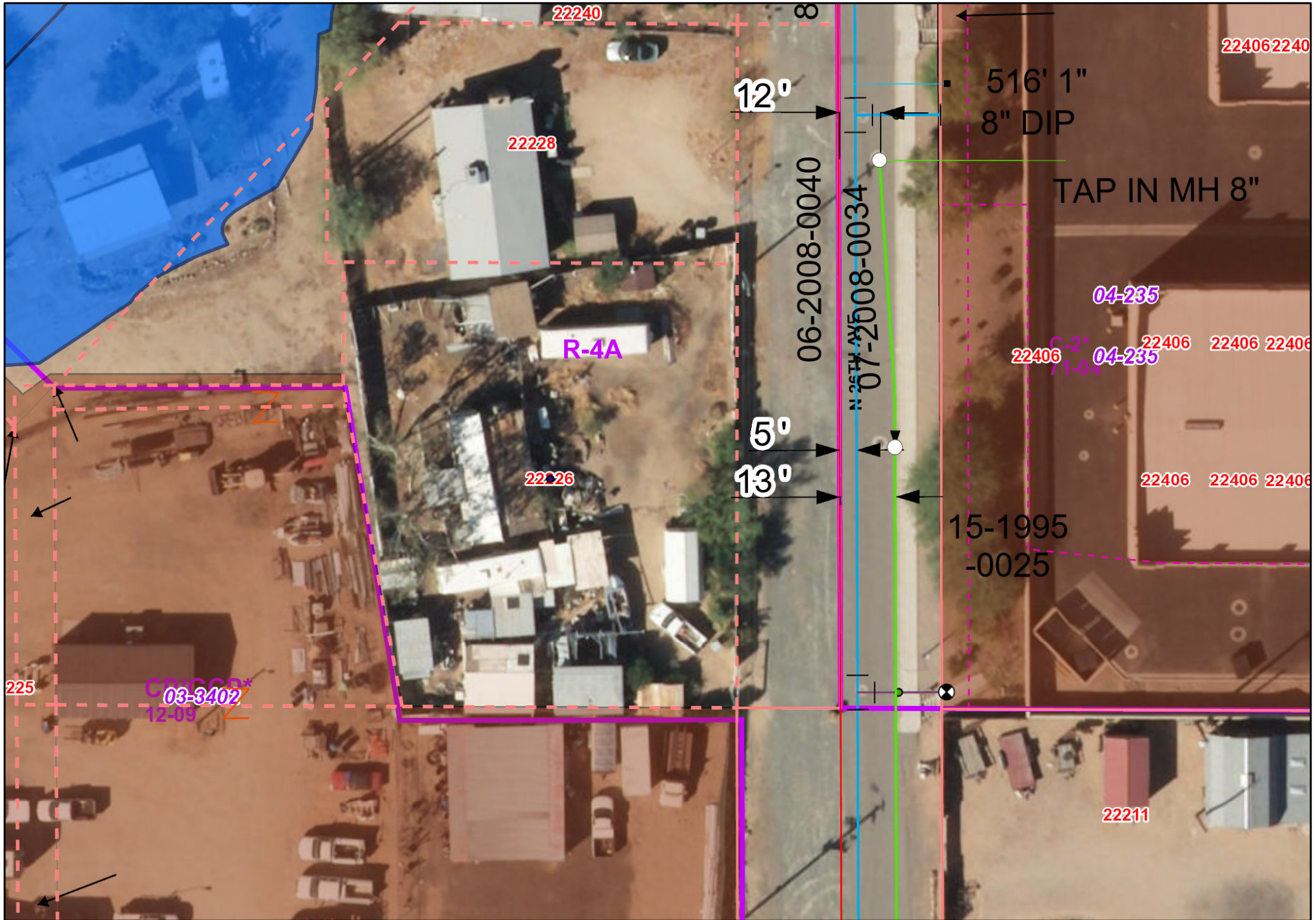
This product is intended as reference information only and may not be suitable for
legal, engineering, or surveying purposes.

Date: 10/1/2024



City of Phoenix

Planning and Development



Disclaimer : The information provided on this map is based on record drawings submitted by others.
Users of this information are cautioned that independent verification of actual conditions may be necessary. Printing Water Data is for Internal Staff Only

1 inch = 36 feet

0 15 30 60 Feet



Date: 9/17/2024



City of Phoenix

Chuck Reingruber Online Land Auction (22226 N 26TH

Maricopa County, Arizona, 0.32 AC +/-



- Boundary
- Forest Service
- State Land
- Fish and Wildlife
- National Park
- Other
- BLM
- Local Government

Chuck Reingruber Online Land Auction (22226 N 26TH

Maricopa County, Arizona, 0.32 AC +/-



- Boundary
- Forest Service
- State Land
- Fish and Wildlife
- National Park
- Other
- BLM
- Local Government

Chuck Reingruber Online Land Auction (22226 N 26TH

Maricopa County, Arizona, 0.32 AC +/-



Boundary Stream, Intermittent River/Creek Water Body

Chuck Reingruber Online Land Auction (22226 N 26TH

Maricopa County, Arizona, 0.32 AC +/-



Boundary

Forest Service

State Land

Fish and Wildlife

National Park

Other

BLM

Local Government

Floodway

Special

Unmapped/ Not Included

100 Year Floodplain

500 Year Floodplain