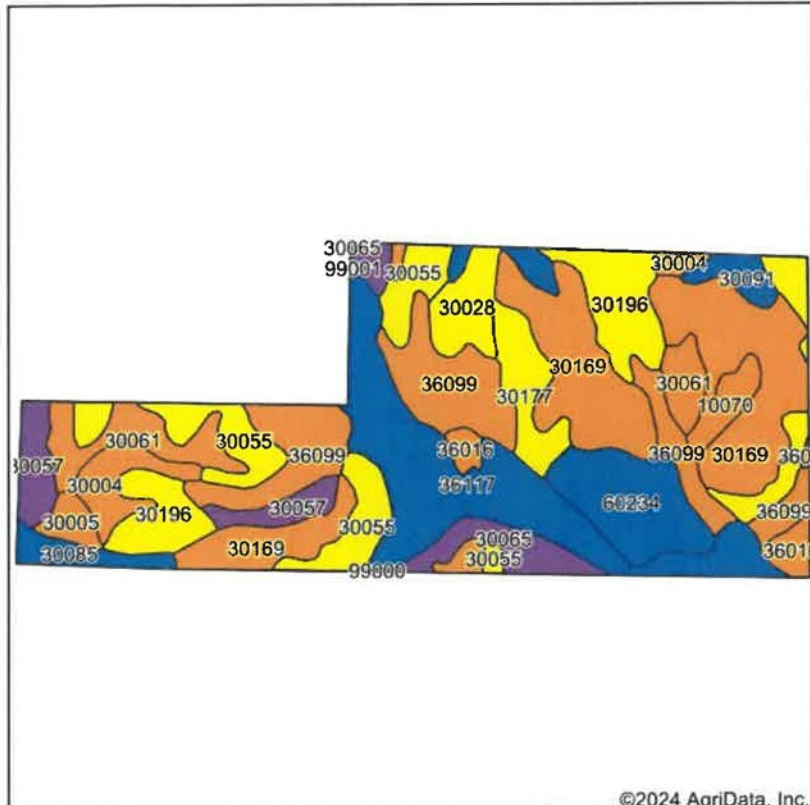
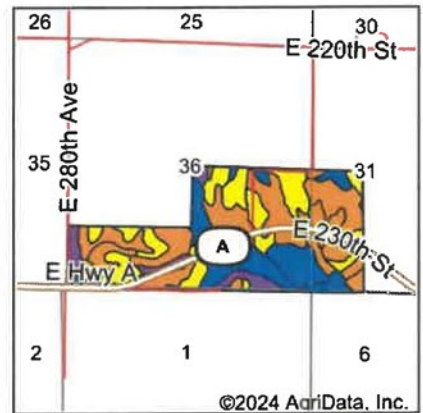


## Soils Map



Soils data provided by USDA and NRCS.



State: **Missouri**  
County: **Harrison**  
Location: **36-65N-27W**  
Township: **Marion**  
Acres: **306.29**  
Date: **9/12/2024**



**NELSON REAL ESTATE**

Maps Provided By:











© AgriData, Inc. 2023

[www.AgriDataInc.com](http://www.AgriDataInc.com)



Area Symbol: MO081, Soil Area Version: 27

Code	Soil Description	Acres	Percent of field	Non-Irr Class Legend	Non-Irr Class *C	Alfalfa hay Tons	Caucasian bluestem Tons	Common bermudagrass Tons	Orchardgrass red clover Tons	Tall fescue Tons	Warm season grasses Tons
30169	Pershing silt loam, 5 to 9 percent slopes	60.52	19.8%		IIle						
36117	Nodaway silt loam, heavy till, 0 to 2 percent slopes, occasionally flooded	43.52	14.2%		IIw						
36099	Zook-Colo silty clay loams, 1 to 3 percent slopes, frequently flooded	37.70	12.3%		IIIw			8	7	8	9
30196	Shelby clay loam, 9 to 14 percent slopes, severely eroded	29.12	9.5%		IVe						
30055	Gara clay loam, 9 to 14 percent slopes, severely eroded	25.24	8.2%		IVe						
60234	Weller silt loam, 2 to 5 percent slopes	18.37	6.0%		Ile						
30061	Gara loam, 5 to 9 percent slopes	17.27	5.6%		IIle	6	7	6	6	6	7
30057	Gara loam, 14 to 18 percent slopes	12.90	4.2%		VIe						

Soils data provided by USDA and NRCS.