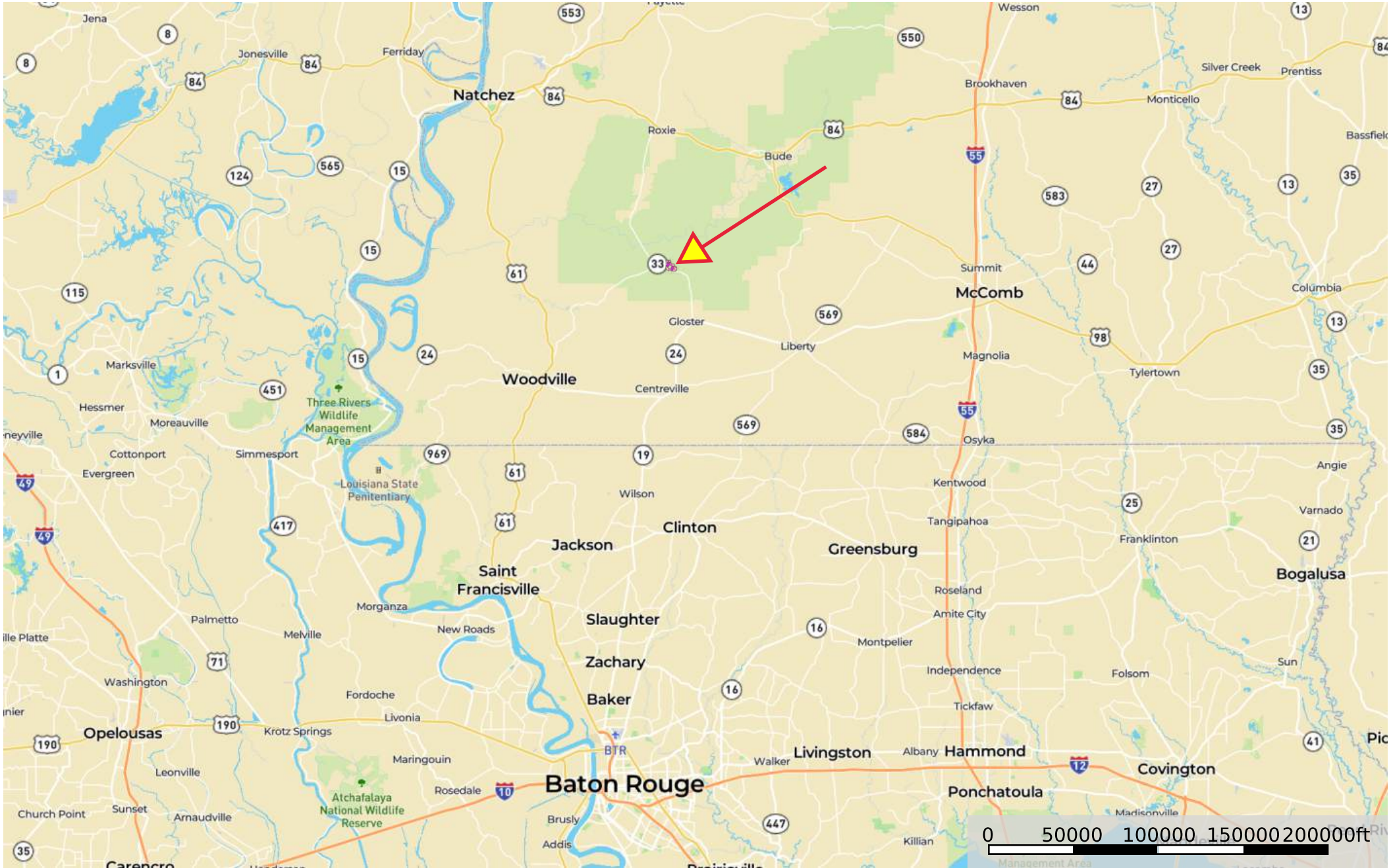
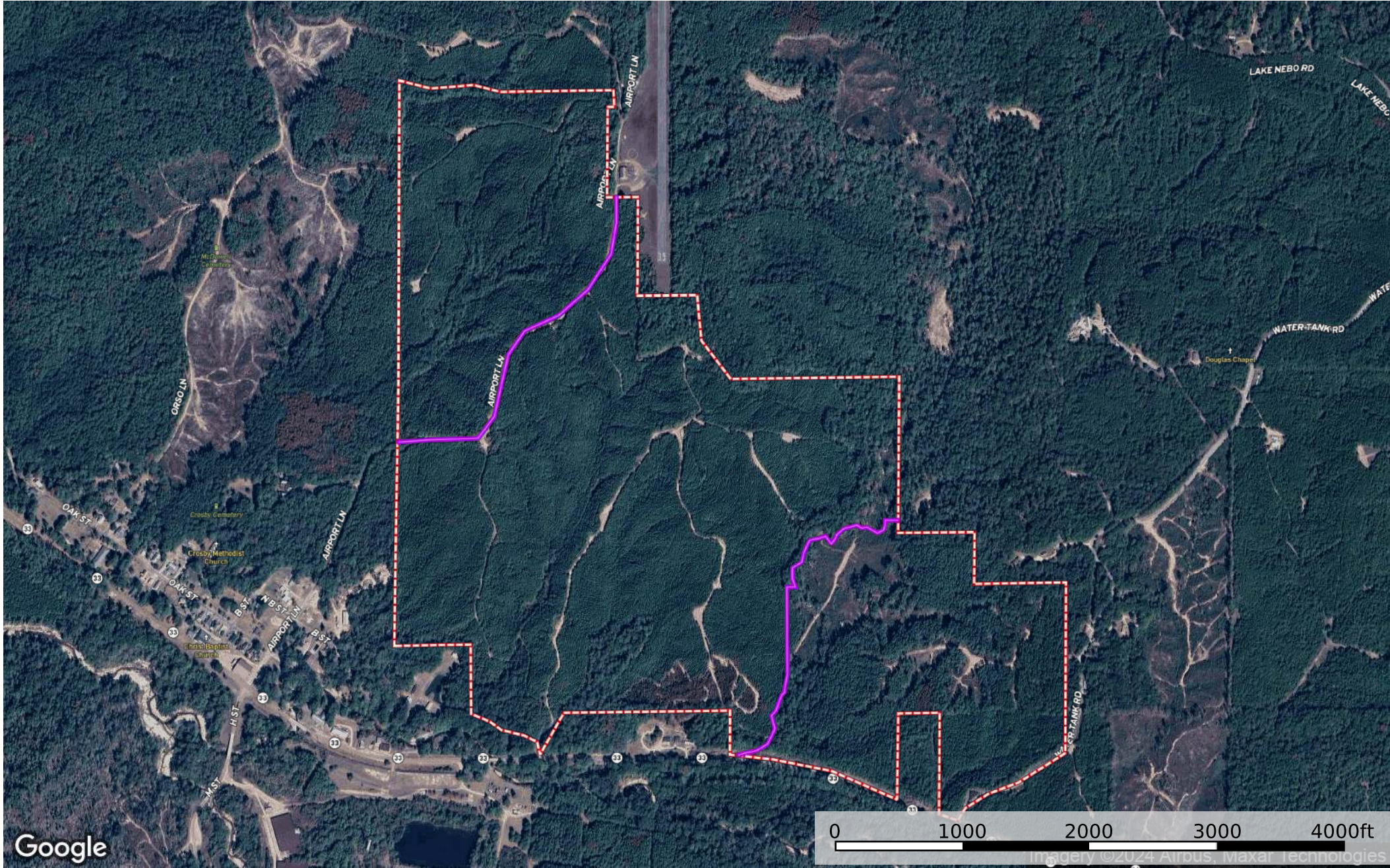


Tillman 396 Crosby Point
Amite County, Mississippi, 396 AC +/-

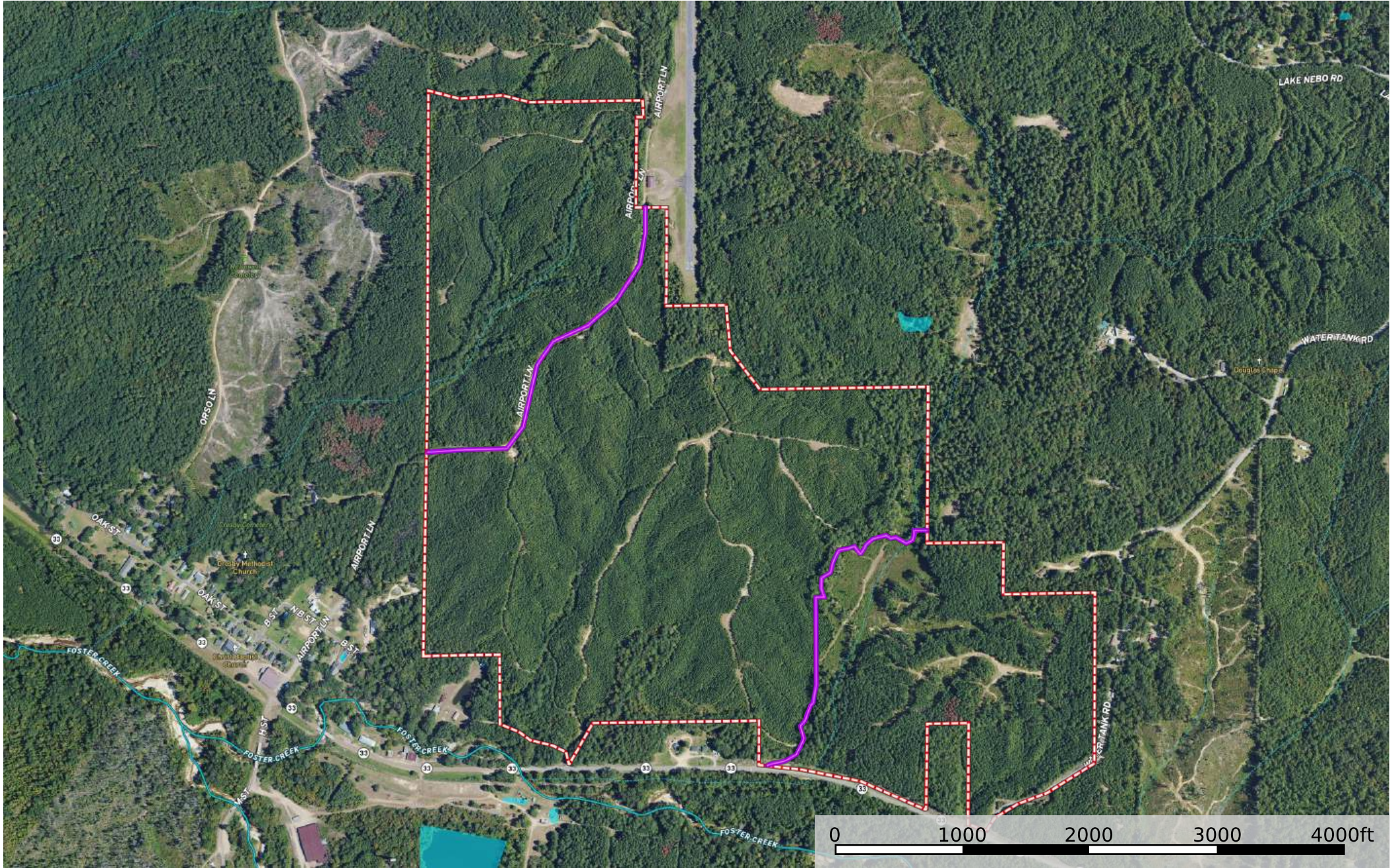


 Pipeline  Boundary



— Pipeline ▭ Boundary

Tillman 396 Crosby Point
Amite County, Mississippi, 396 AC +/-



- Pipeline

Boundary

Stream, Intermittent

River/Creek

Water Body