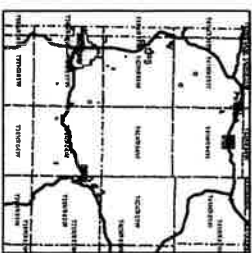


This map/plat may or may not be a survey of the land depicted hereon. You should not rely upon it for any purpose other than orientation to the general location of the parcel or parcels depicted. The company expressly disclaims any liability for alleged loss or damage which may result from reliance upon this map.

**LATAH COUNTY ASSESSOR  
OFFICIAL PLAT RECORD  
(Rural Subdivisions)**

**LOCATION**



**LEGEND**

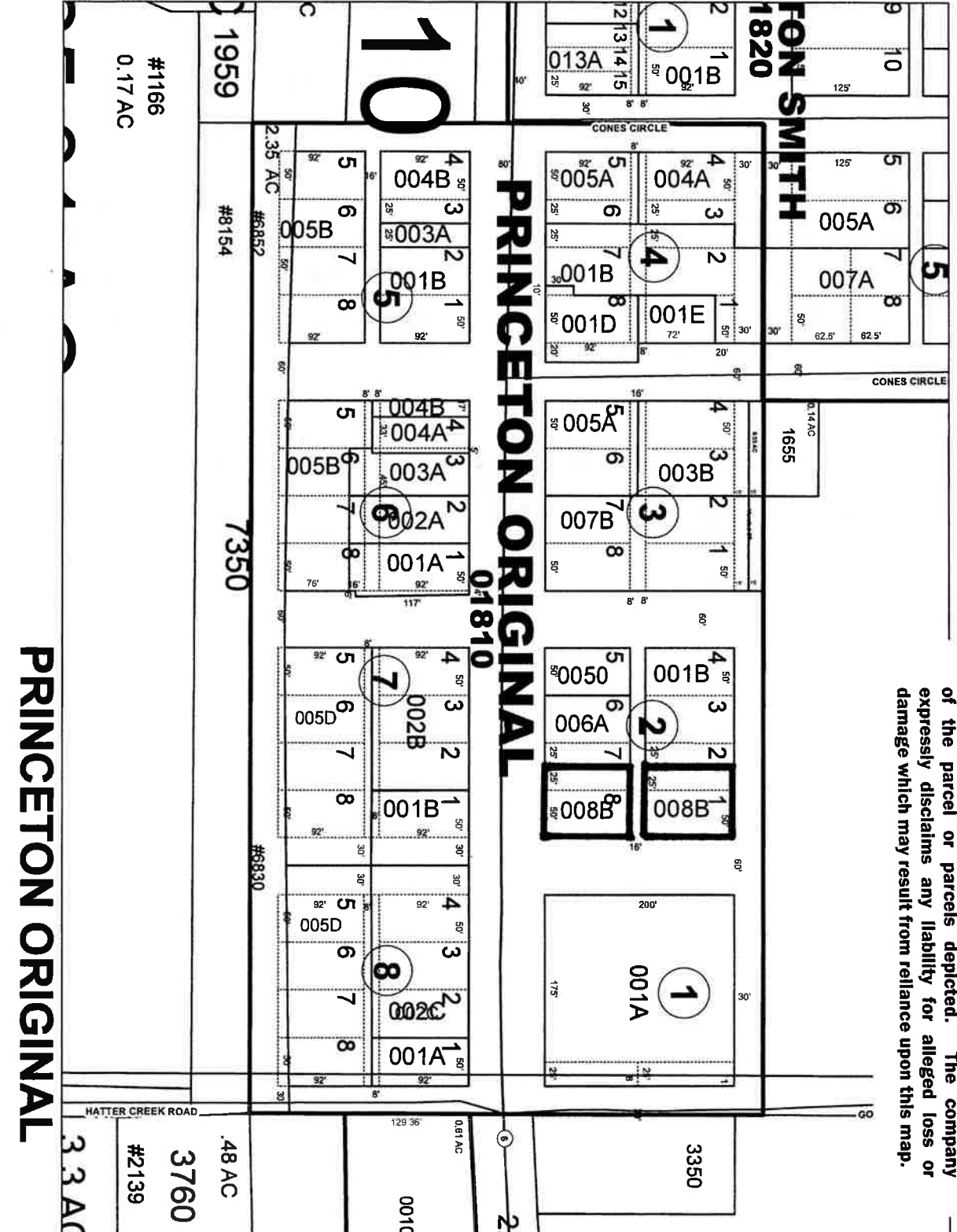
- ▣ Parcel
- ▤ Subdivisions
- Lot Lines
- Roads
- ROAD\_TYPE
- CITY
- COUNTY
- FEDERAL HIGHWAY
- PRIVATE ROAD
- STATE HIGHWAY

**LEGAL**

© Latah County Official Plat Record.  
These maps are provided by The Latah County Assessor. Due to the variability of the platting process, the data contained herein may not be identical to the data contained in the original plat.

<b>Scale</b>	1:1,140	<b>Date Printed</b>	July 2021
<b>File Name</b>	Cartographer		
<b>Rural Maps</b>	Debbie Jacobs		
<b>Page Number</b>	33 AC		

**PRINCETON ORIGINAL**



**RS 82**