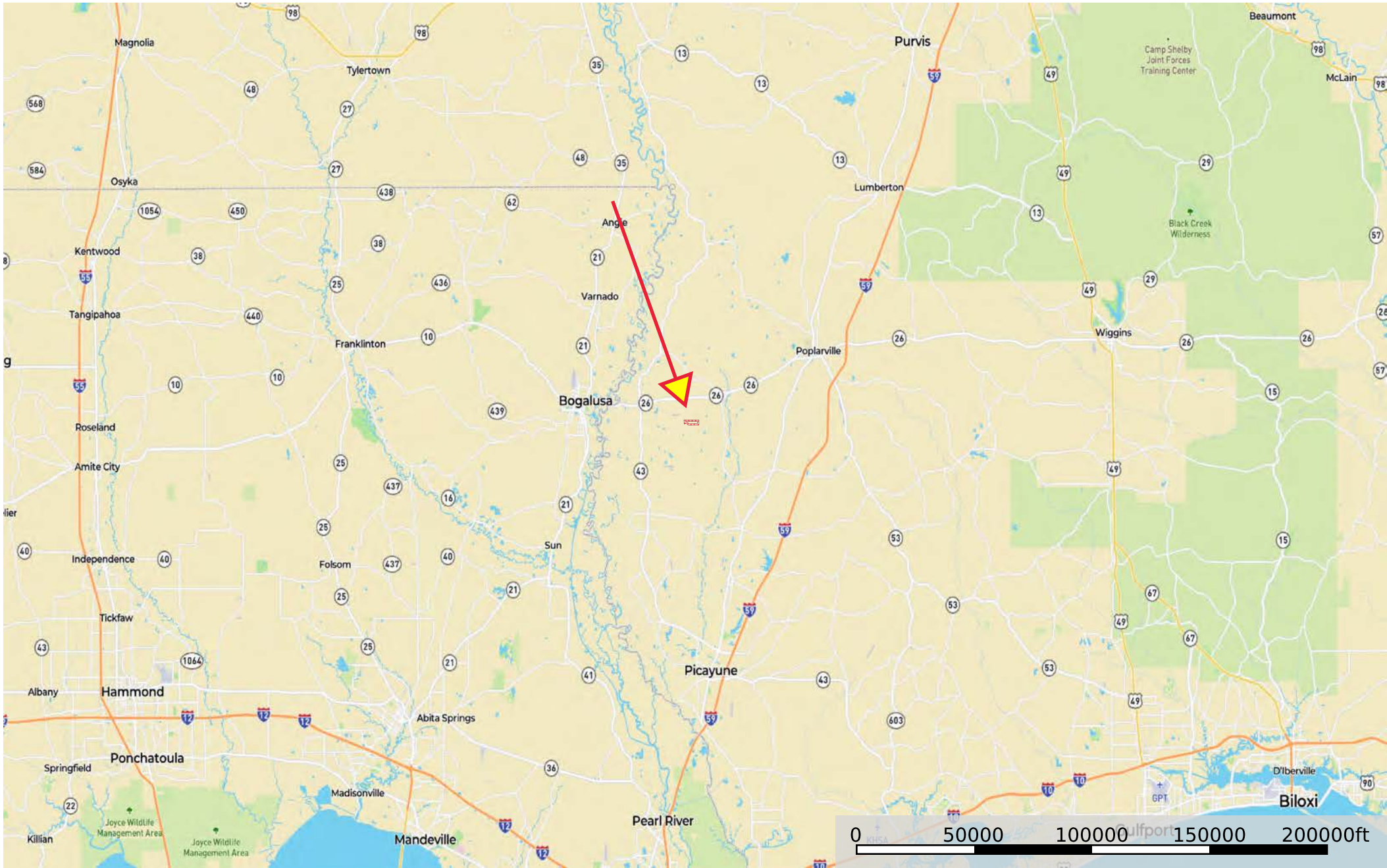



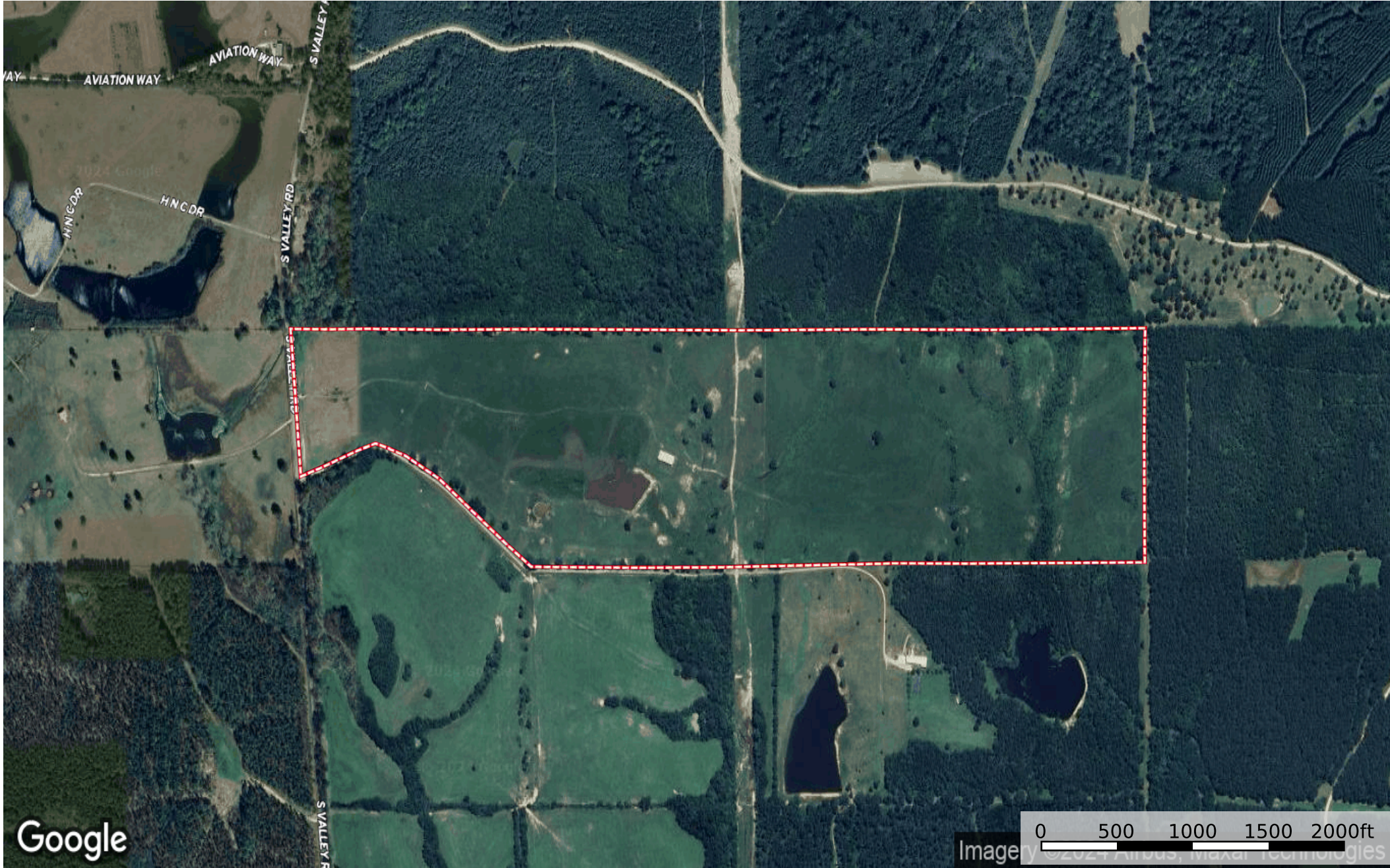
156.5 Acres - S. Valley Rd - Pearl River County
Pearl River County, Mississippi, 156.5 AC +/-




 Boundary

156.5 Acres - S. Valley Rd - Pearl River County

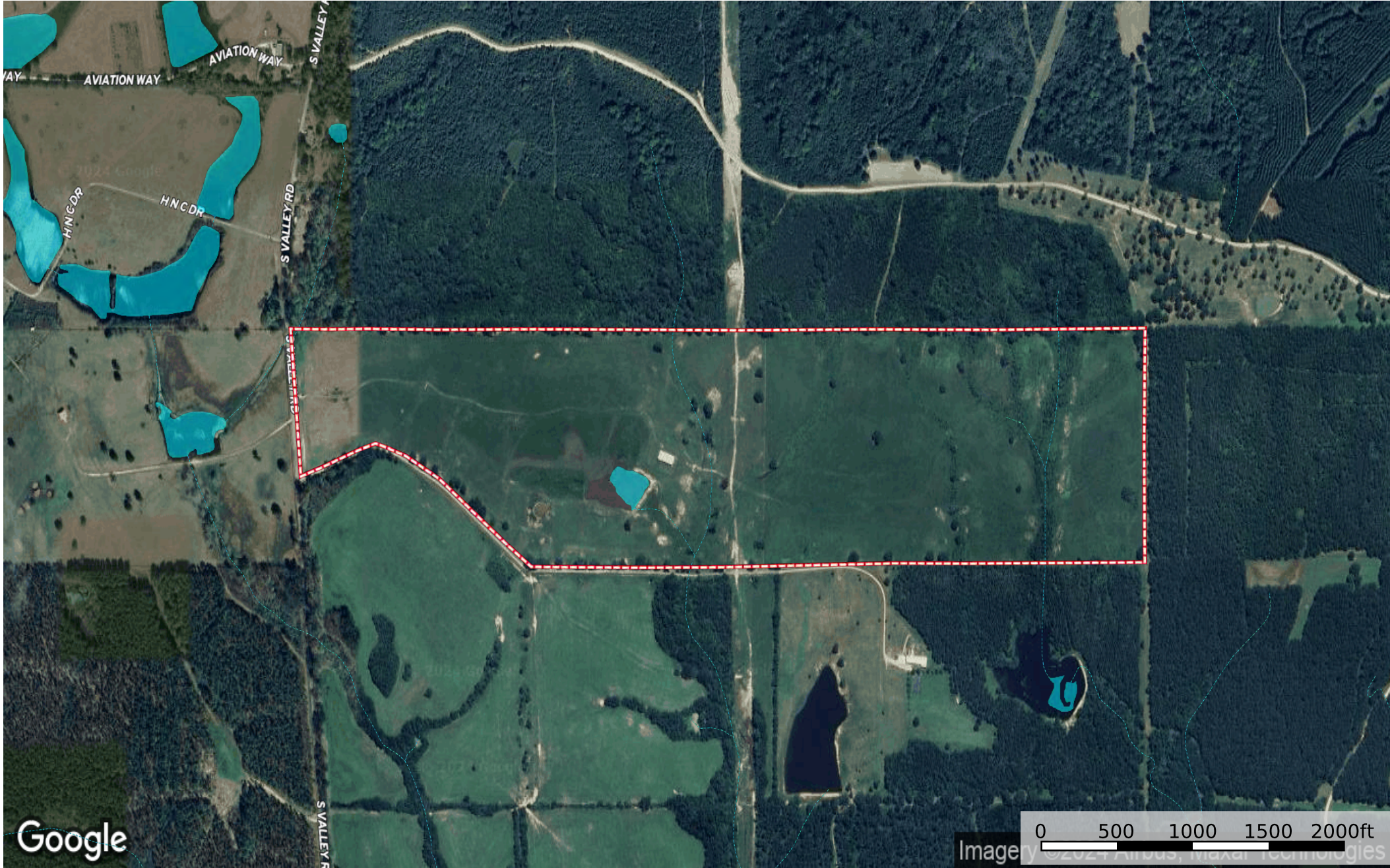
Pearl River County, Mississippi, 156.5 AC +/-



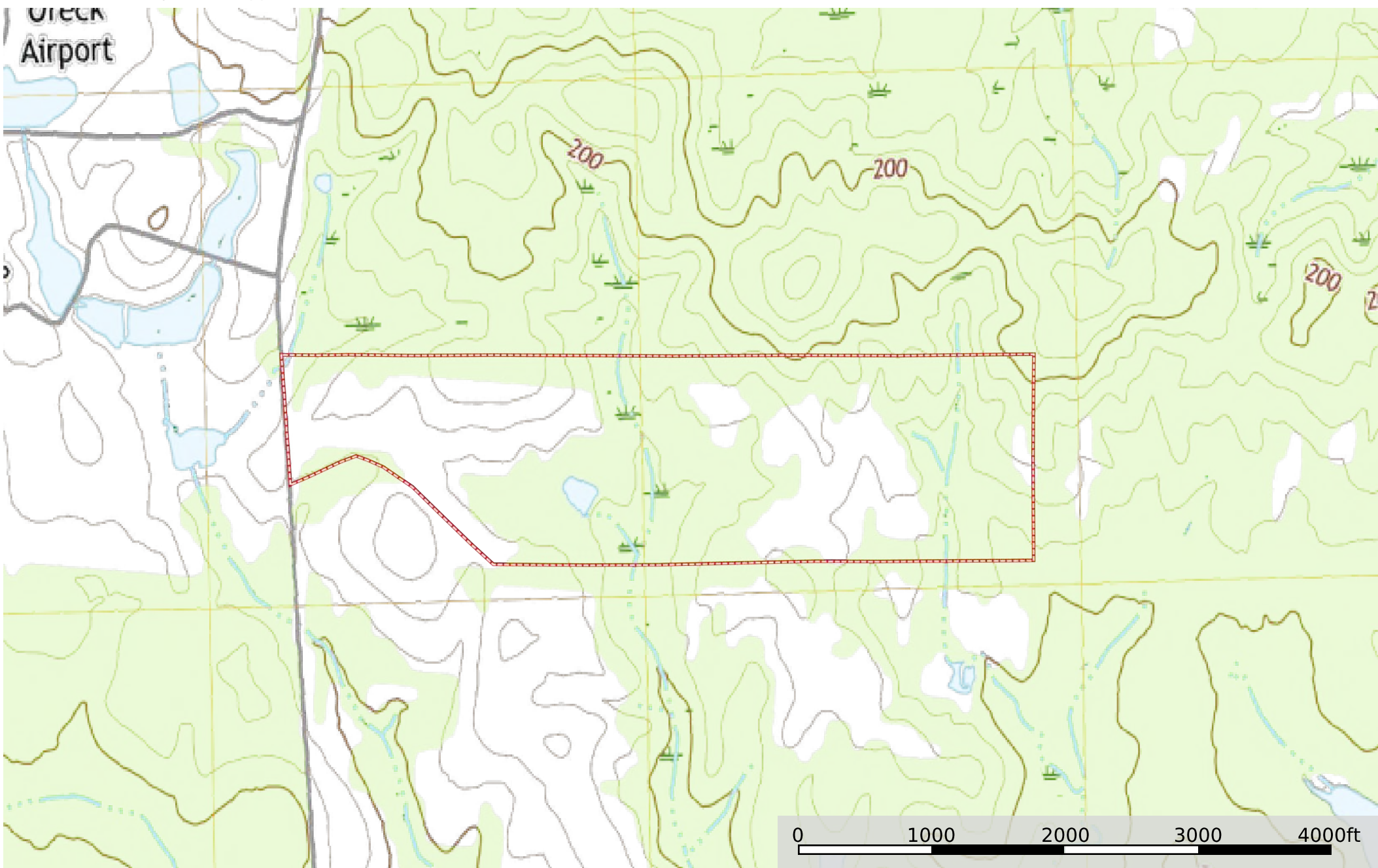
 Boundary


156.5 Acres - S. Valley Rd - Pearl River County

Pearl River County, Mississippi, 156.5 AC +/-



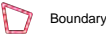
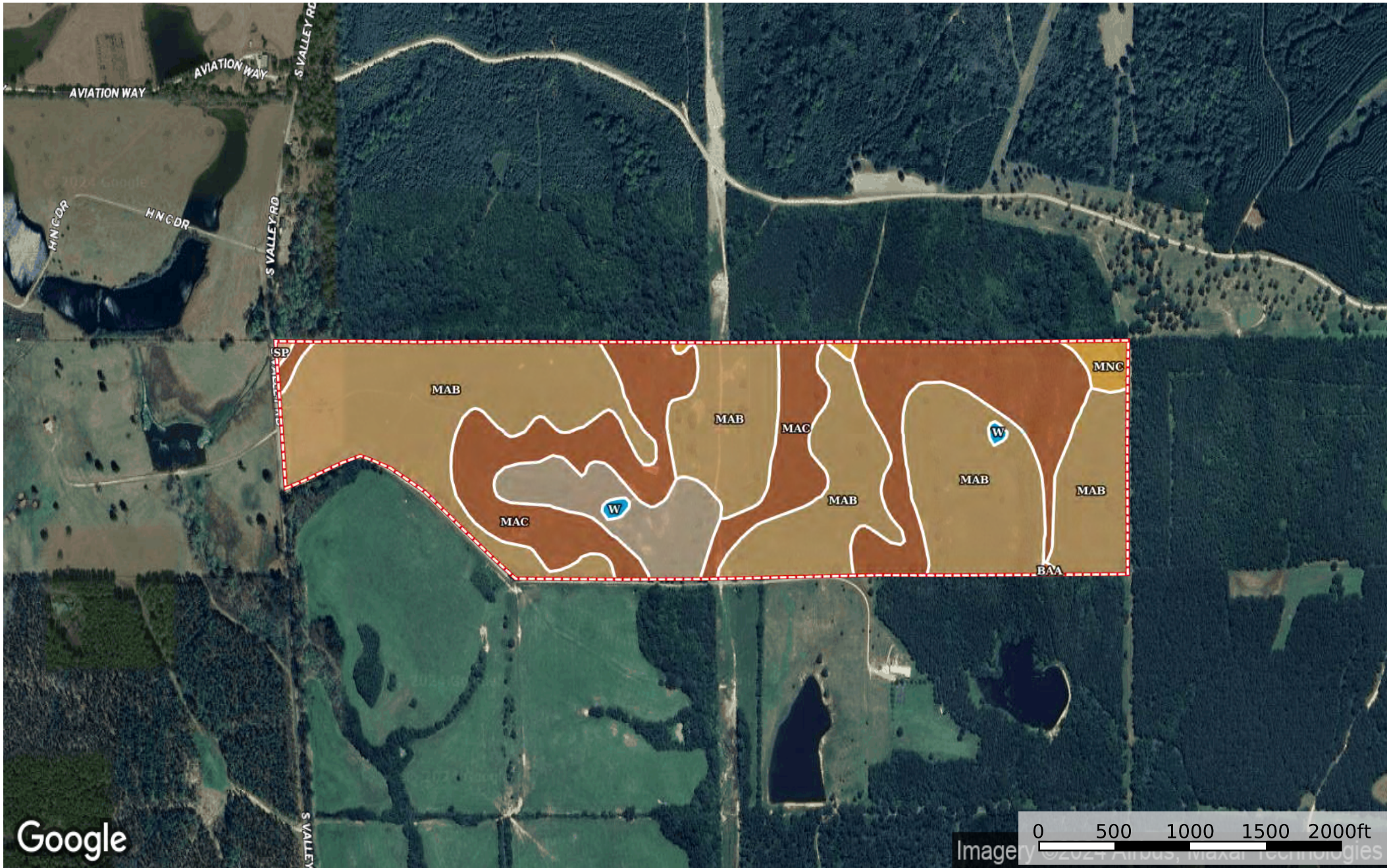
156.5 Acres - S. Valley Rd - Pearl River County
Pearl River County, Mississippi, 156.5 AC +/-



 Boundary

156.5 Acres - S. Valley Rd - Pearl River County

Pearl River County, Mississippi, 156.5 AC +/-



|  Boundary 153.55 ac

SOIL CODE	SOIL DESCRIPTION	ACRES	%	CPI	NCCPI	CAP
MaB	Malbis fine sandy loam, 2 to 5 percent slopes	90.27	58.79	0	59	2e
MaC	Malbis fine sandy loam, 5 to 8 percent slopes	48.89	31.84	0	62	3e
Bd	Bibb sandy loam	11.03	7.18	0	38	5w
MnC	McLaurin fine sandy loam, 5 to 8 percent slopes	2.37	1.54	0	47	3e
W	Water	0.62	0.4	0	-	-
Sp	Smithton sandy loam	0.24	0.16	0	49	4w
BaA	Basin loam, 0 to 2 percent slopes	0.13	0.08	0	38	2w
TOTALS		153.55(*)	100%	-	57.99	2.55









(*) Total acres may differ in the second decimal compared to the sum of each acreage soil. This is due to a round error because we only show the acres of each soil with two decimal.

Capability Legend

Increased Limitations and Hazards

Decreased Adaptability and Freedom of Choice Users

Land, Capability

								
	1	2	3	4	5	6	7	8
'Wild Life'	•	•	•	•	•	•	•	•
Forestry	•	•	•	•	•	•	•	
Limited	•	•	•	•	•	•	•	
Moderate	•	•	•	•	•	•		
Intense	•	•	•	•	•			
Limited	•	•	•	•				
Moderate	•	•	•					
Intense	•	•						
Very Intense	•							

Grazing Cultivation

(c) climatic limitations (e) susceptibility to erosion

(s) soil limitations within the rooting zone (w) excess of water