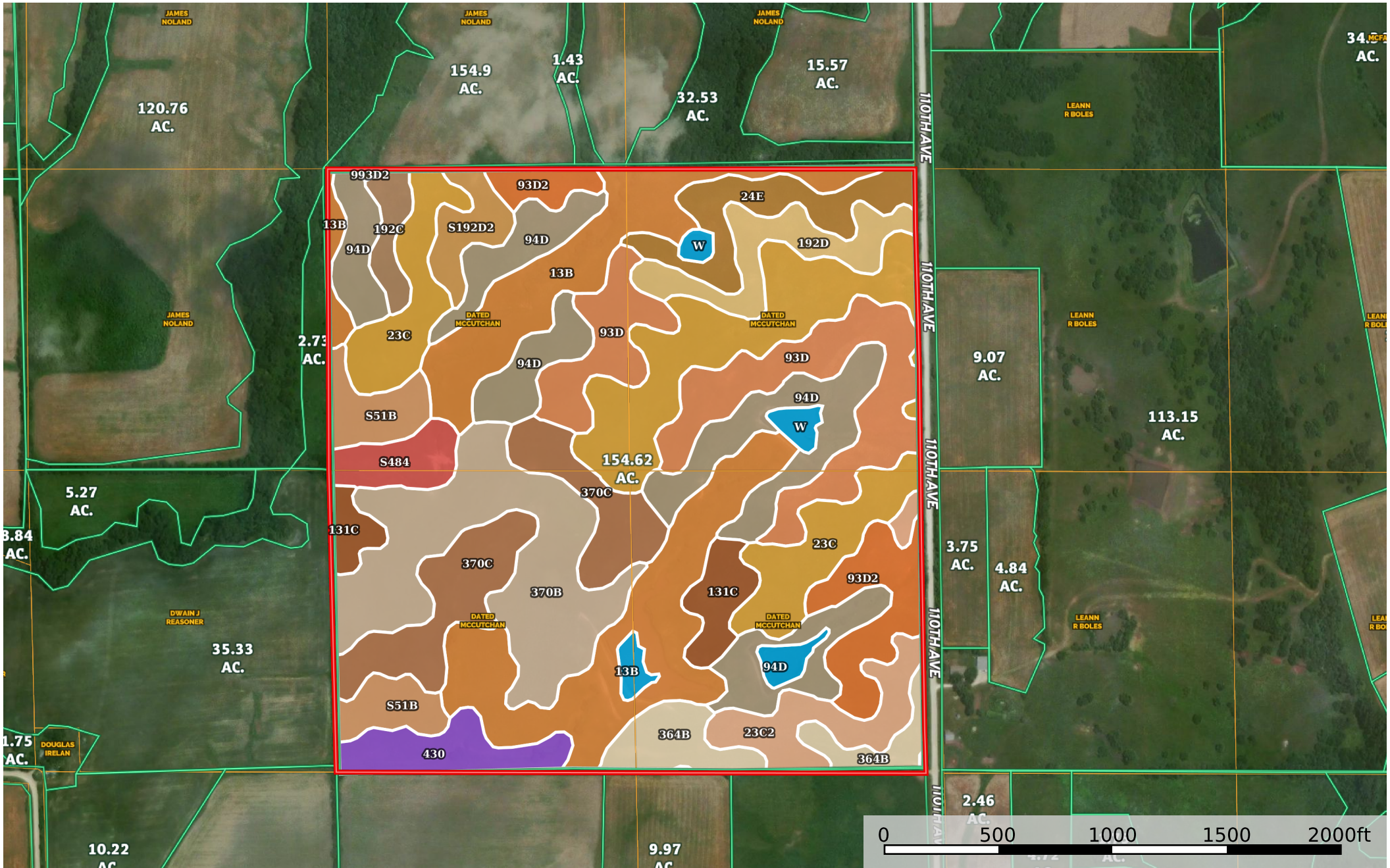



Iowa, AC +/-



Boundary

 154.54 ac

SOIL CODE	SOIL DESCRIPTION	ACRES	%	CSR2	CPI	NCCPI	CAP
13B	Olmitz-Zook-Colo complex, 0 to 5 percent slopes	24.57	15.9	77.0	0	81	2e
23C	Arispe silty clay loam, 5 to 9 percent slopes	21.59	13.97	66.0	0	81	3e
94D	Caleb-Mystic loams, 9 to 14 percent slopes	18.77	12.15	42.0	0	81	4e
370B	Sharpsburg silty clay loam, 2 to 5 percent slopes	15.98	10.34	91.0	0	91	2e
93D	Shelby-Adair loams, 9 to 14 percent slopes	14.32	9.27	40.0	0	76	4e
370C	Sharpsburg silty clay loam, 5 to 9 percent slopes	10.39	6.72	81.0	0	91	3e
93D2	Shelby-Adair complex, 9 to 14 percent slopes, moderately eroded	6.41	4.15	32.0	0	69	4e
24E	Shelby loam, 14 to 18 percent slopes	5.39	3.49	32.0	0	65	4e
23C2	Arispe silty clay loam, 5 to 9 percent slopes, moderately eroded	5.24	3.39	62.0	0	76	3e
192D	Adair loam, heavy till, 9 to 14 percent slopes	4.92	3.18	16.0	0	71	4e
S51B	Vesser silt loam, 2 to 5 percent slopes, rarely flooded	4.89	3.16	75.0	0	94	2w
364B	Grundy silty clay loam, 2 to 5 percent slopes	4.78	3.09	72.0	0	80	2e
430	Ackmore silt loam, heavy till, 0 to 2 percent slopes, occasionally flooded	3.86	2.5	77.0	0	93	2w
131C	Pershing silt loam, 5 to 9 percent slopes	3.75	2.43	65.0	0	73	3e
S484	Lawson silt loam, heavy till, 0 to 2 percent slopes, occasionally flooded	2.72	1.76	86.0	0	94	2w
W	Water	2.63	1.7	-	0	-	-
S192D2	Adair clay loam, heavy till, 9 to 14 percent slopes, moderately eroded	2.51	1.62	9.0	0	64	4e
192C	Adair loam, heavy till, 5 to 9 percent slopes	1.77	1.15	39.0	0	74	3e
993D2	Gara-Armstrong clay loams, 9 to 14 percent slopes, moderately eroded	0.05	0.03	30.0	0	67	4e
TOTALS		154.54(*)	100%	60.41	-	79.69	2.97









(*) Total acres may differ in the second decimal compared to the sum of each acreage soil. This is due to a round error because we only show the acres of each soil with two decimal.

Capability Legend

Increased Limitations and Hazards

Decreased Adaptability and Freedom of Choice Users

Land, Capability

								
	1	2	3	4	5	6	7	8
'Wild Life'	•	•	•	•	•	•	•	•
Forestry	•	•	•	•	•	•	•	
Limited	•	•	•	•	•	•	•	
Moderate	•	•	•	•	•	•		
Intense	•	•	•	•	•			
Limited	•	•	•	•				
Moderate	•	•	•					
Intense	•	•						
Very Intense	•							

Grazing Cultivation

(c) climatic limitations (e) susceptibility to erosion

(s) soil limitations within the rooting zone (w) excess of water