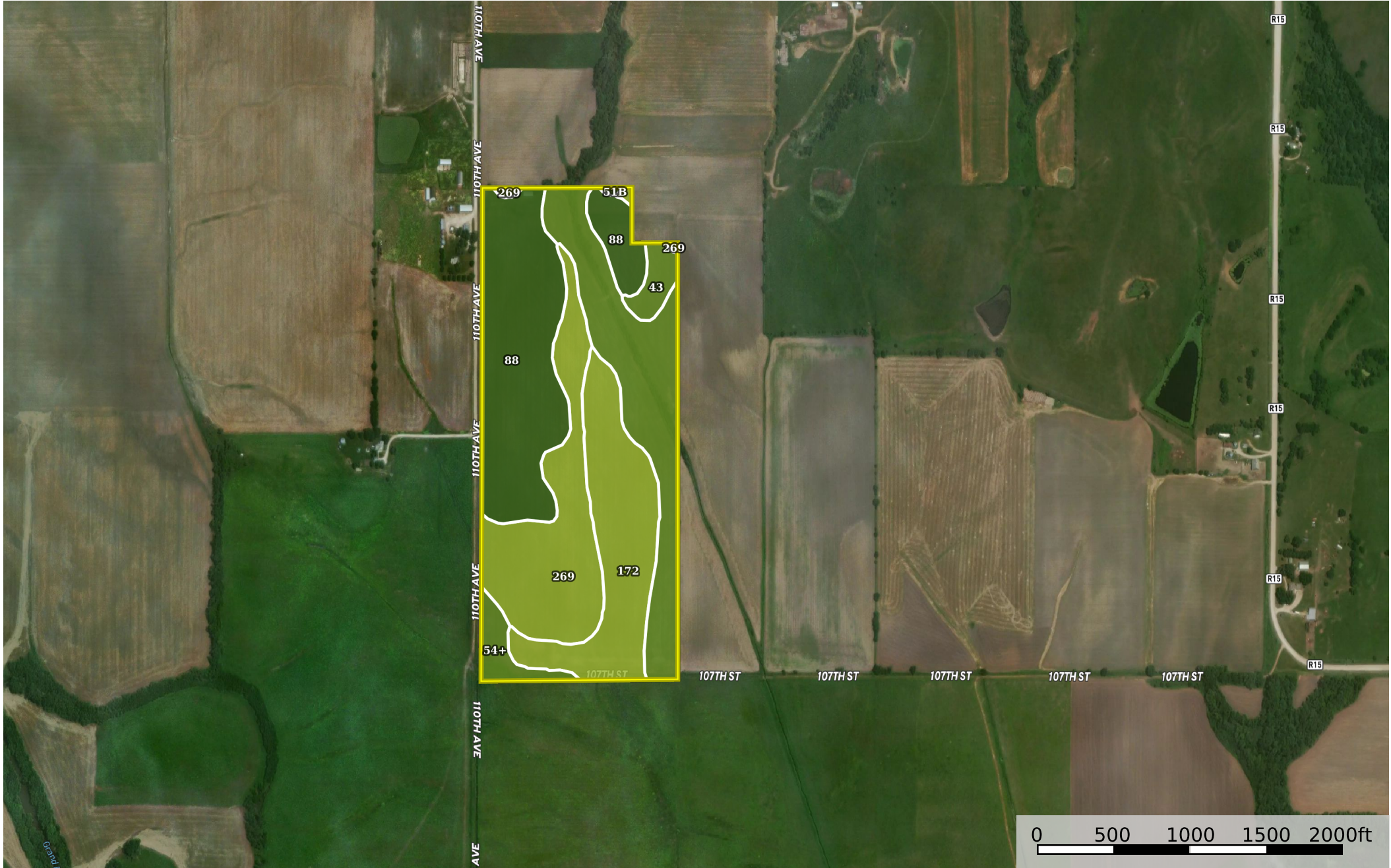



McCutchan Tract 4  
Iowa, AC +/-



 Boundary 1

## Boundary 1 76.5 ac

SOIL CODE	SOIL DESCRIPTION	ACRES	%	CSR2	CPI	NCCPI	CAP
88	Nevin silty clay loam, heavy till, 0 to 2 percent slopes, rarely flooded	23.05	30.13	95.0	0	94	1
54+	Zook silt loam, heavy till, 0 to 2 percent slopes, occasionally flooded, overwash	19.1	24.97	68.0	0	73	2w
269	Humeston silt loam, 0 to 2 percent slopes, occasionally flooded	16.56	21.65	70.0	0	90	3w
172	Wabash silty clay, 0 to 1 percent slopes	15.75	20.59	5.0	0	8	3w
43	Bremer silty clay loam, 0 to 2 percent slopes	1.93	2.52	78.0	0	77	2w
51B	Vesser silt loam, 2 to 5 percent slopes, rarely flooded	0.11	0.14	75.0	0	94	2w
TOTALS		76.5(*)	100%	63.86	-	69.76	2.12









(\*) Total acres may differ in the second decimal compared to the sum of each acreage soil. This is due to a round error because we only show the acres of each soil with two decimal.

### Capability Legend

Increased Limitations and Hazards

Decreased Adaptability and Freedom of Choice Users

Land, Capability

								
	1	2	3	4	5	6	7	8
'Wild Life'	•	•	•	•	•	•	•	•
Forestry	•	•	•	•	•	•	•	
Limited	•	•	•	•	•	•	•	
Moderate	•	•	•	•	•	•		
Intense	•	•	•	•	•			
Limited	•	•	•	•				
Moderate	•	•	•					
Intense	•	•						
Very Intense	•							

### Grazing Cultivation

(c) climatic limitations (e) susceptibility to erosion

(s) soil limitations within the rooting zone (w) excess of water