



Hunting & Recreational Land For Sale

Ashland Avenue, Bussey, IA 50044

**Hawkeye Farm
Mgmt & Real Estate**

Price: \$742,500

Acres: 135 +/-

Price/Acre: \$5,500







PROPERTY DETAILS

- Abundant Wildlife & Hunting Opportunities
- Mix of Rolling Ridge Ground & Level Bottom Land
- Total CRP Acres Earning \$14,516 Annually
- Contracts Expire in 2027 & 2030
- Pond & Seasonal Creek
- Located 2 Miles from Bussey
- Located 15 Miles from both Albia & Lovilia
- Annual Taxes \$2,476

CONTACT US



**Hawkeye
Farm Mgmt &
Real Estate**

 (641) 932-7796
 Hawkeye@UCIowa.com
 www.UCIowa.com
 1010 S Clinton
Albia, IA 52531



RYAN AMMONS
(641) 777- 2955

Ryan@UCIowa.com



NATE AMMONS
(641) 777-2861

Nate@UCIowa.com



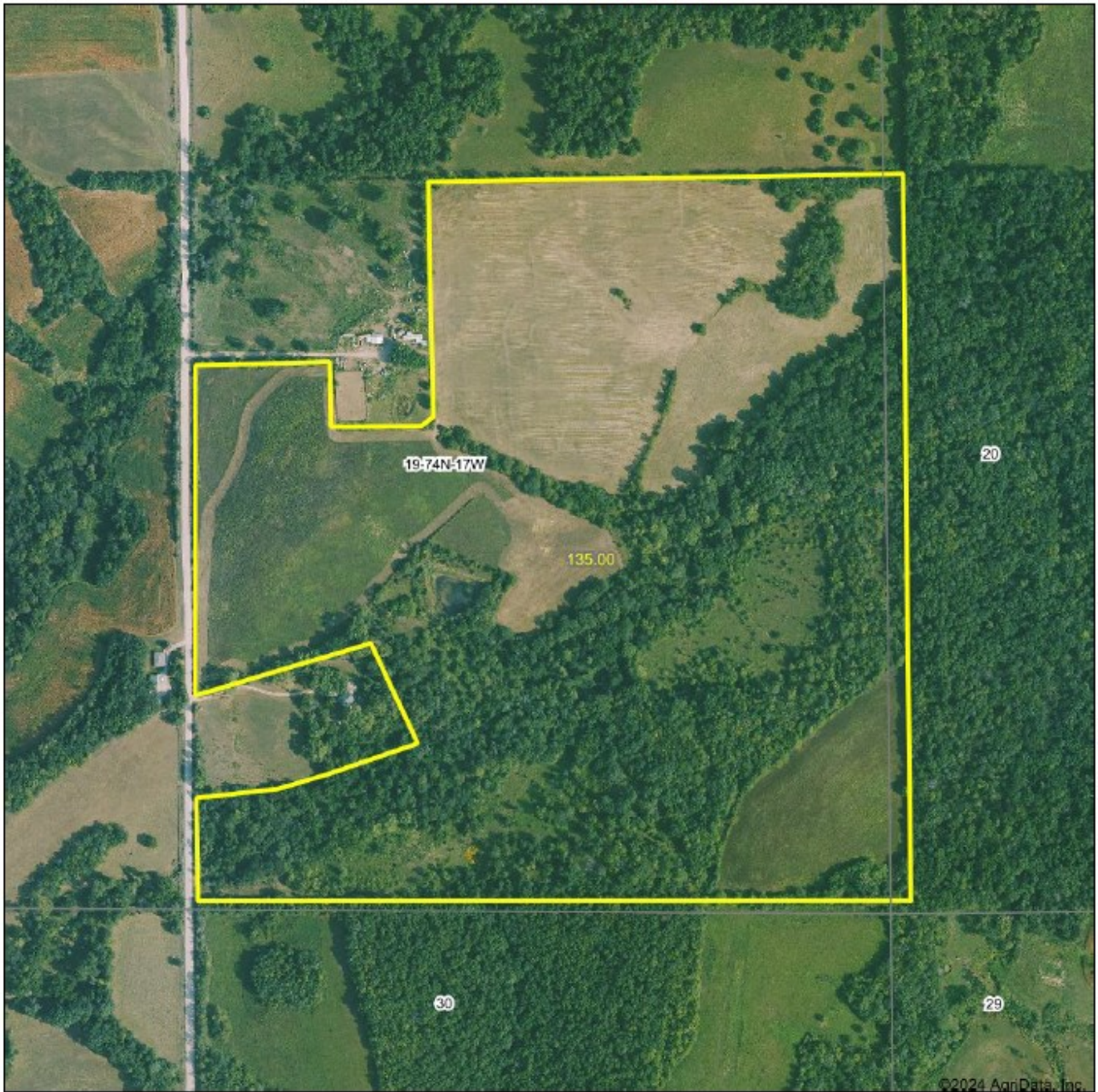
Alan Ammons, Broker, Licensed in Iowa & Missouri. All Agents Licensed in Iowa. The above information, although believed to be accurate, is not warranted or guaranteed by the owner, listing firm, or listing agent.

PROPERTY MAP



**Hawkeye
Farm Mgmt &
Real Estate**

Aerial Map
Boundary Lines Are Approximate



Hawkeye Farm Mgmt & Real Estate



22 N Main, Albia IA Phone: 641-932-7796
Email: hawkeye@uscibwa.com
On the web: www.uscibwa.com
www.hawkeyefarm.com

Boundary Center: 41° 11' 37.44, -92° 51' 20.36

0ft 567ft 1134ft

19-74N-17W
Mahaska County
Iowa



Maps Provided By:
 surety
CUSTOMER ONLINE MAPPING
© AgriData, Inc. 2023 www.AgriDataInc.com

7/23/2024