

Notes

1. The purpose of this plat is to create 7 buildable lots.
2. Bearings are based on deed or record.
3. This surveyor has not physically located the underground utilities. Above ground and underground utilities were taken and located by the contractor. The contractor shall be responsible for locating and marking all utility lines. The contractor shall be responsible for protecting all utility lines. The contractor shall be responsible for obtaining all necessary permits for the survey. This survey is subject to the findings of an accurate title search.
4. An utility report was provided by the engineer. This survey is subject to the findings of an accurate title search.
5. Lots are to be served by individual wells.

C	DELTA	BETA	ALPHA	TANGENT	CHORD	CHORD BEARING
CL	27°05'23"	488.00'	291.27'	145.74'	249.25'	S88°40'44"E
CL	90°44'59"	4082.00'	475.26'	231.53'	475.55'	S42°38'58"W

FLOOD NOTE
NO PORTION OF THIS PROPERTY IS LOCATED IN AN AREA DESIGNATED AS A FLOOD HAZARD ZONE AS DETERMINED BY FEMA MAPS, A FLOOD CONTROL DISTRICT OF WILLIAMSON COUNTY, TN, DATED 04/18/2006.

WILLIAMSON COUNTY DEPARTMENT OF SANITARY ENGINEERING NOTES

1. ANY OTHERING, PLACING, CONNECTION, OR DISCONNECTION FROM THEIR ORIGINAL STATE, OF THE SANITARY DISPOSAL OR SANITARY SYSTEM, SHALL BE APPROVED BY THE COUNTY ENGINEER.
2. ALL SANITARY DISPOSAL SYSTEMS SHALL BE LOCATED TO SERVE AN AREA OF CONTIGUOUS PROPERTY AS AN INDIVIDUAL SYSTEM OR AS A COMMON SANITARY DISPOSAL SYSTEM.
3. ALL SANITARY DISPOSAL SYSTEMS SHALL BE LOCATED TO SERVE AN AREA OF CONTIGUOUS PROPERTY AS AN INDIVIDUAL SYSTEM OR AS A COMMON SANITARY DISPOSAL SYSTEM.
4. ALL SANITARY DISPOSAL SYSTEMS SHALL BE LOCATED TO SERVE AN AREA OF CONTIGUOUS PROPERTY AS AN INDIVIDUAL SYSTEM OR AS A COMMON SANITARY DISPOSAL SYSTEM.
5. SANITARY DISPOSAL SYSTEMS SHALL BE LOCATED TO SERVE AN AREA OF CONTIGUOUS PROPERTY AS AN INDIVIDUAL SYSTEM OR AS A COMMON SANITARY DISPOSAL SYSTEM.
6. THE LOCATION OF ALL SANITARY DISPOSAL SYSTEMS SHALL BE APPROVED BY THE COUNTY ENGINEER.
7. THE LOCATION OF ALL SANITARY DISPOSAL SYSTEMS SHALL BE APPROVED BY THE COUNTY ENGINEER.
8. THE LOCATION OF ALL SANITARY DISPOSAL SYSTEMS SHALL BE APPROVED BY THE COUNTY ENGINEER.
9. THE LOCATION OF ALL SANITARY DISPOSAL SYSTEMS SHALL BE APPROVED BY THE COUNTY ENGINEER.
10. THE LOCATION OF ALL SANITARY DISPOSAL SYSTEMS SHALL BE APPROVED BY THE COUNTY ENGINEER.
11. THE LOCATION OF ALL SANITARY DISPOSAL SYSTEMS SHALL BE APPROVED BY THE COUNTY ENGINEER.
12. THE LOCATION OF ALL SANITARY DISPOSAL SYSTEMS SHALL BE APPROVED BY THE COUNTY ENGINEER.
13. THE LOCATION OF ALL SANITARY DISPOSAL SYSTEMS SHALL BE APPROVED BY THE COUNTY ENGINEER.
14. THE LOCATION OF ALL SANITARY DISPOSAL SYSTEMS SHALL BE APPROVED BY THE COUNTY ENGINEER.
15. THE LOCATION OF ALL SANITARY DISPOSAL SYSTEMS SHALL BE APPROVED BY THE COUNTY ENGINEER.
16. THE LOCATION OF ALL SANITARY DISPOSAL SYSTEMS SHALL BE APPROVED BY THE COUNTY ENGINEER.
17. THE LOCATION OF ALL SANITARY DISPOSAL SYSTEMS SHALL BE APPROVED BY THE COUNTY ENGINEER.
18. THE LOCATION OF ALL SANITARY DISPOSAL SYSTEMS SHALL BE APPROVED BY THE COUNTY ENGINEER.
19. THE LOCATION OF ALL SANITARY DISPOSAL SYSTEMS SHALL BE APPROVED BY THE COUNTY ENGINEER.
20. THE LOCATION OF ALL SANITARY DISPOSAL SYSTEMS SHALL BE APPROVED BY THE COUNTY ENGINEER.
21. THE LOCATION OF ALL SANITARY DISPOSAL SYSTEMS SHALL BE APPROVED BY THE COUNTY ENGINEER.
22. THE LOCATION OF ALL SANITARY DISPOSAL SYSTEMS SHALL BE APPROVED BY THE COUNTY ENGINEER.
23. THE LOCATION OF ALL SANITARY DISPOSAL SYSTEMS SHALL BE APPROVED BY THE COUNTY ENGINEER.
24. THE LOCATION OF ALL SANITARY DISPOSAL SYSTEMS SHALL BE APPROVED BY THE COUNTY ENGINEER.
25. THE LOCATION OF ALL SANITARY DISPOSAL SYSTEMS SHALL BE APPROVED BY THE COUNTY ENGINEER.
26. THE LOCATION OF ALL SANITARY DISPOSAL SYSTEMS SHALL BE APPROVED BY THE COUNTY ENGINEER.
27. THE LOCATION OF ALL SANITARY DISPOSAL SYSTEMS SHALL BE APPROVED BY THE COUNTY ENGINEER.
28. THE LOCATION OF ALL SANITARY DISPOSAL SYSTEMS SHALL BE APPROVED BY THE COUNTY ENGINEER.
29. THE LOCATION OF ALL SANITARY DISPOSAL SYSTEMS SHALL BE APPROVED BY THE COUNTY ENGINEER.
30. THE LOCATION OF ALL SANITARY DISPOSAL SYSTEMS SHALL BE APPROVED BY THE COUNTY ENGINEER.
31. THE LOCATION OF ALL SANITARY DISPOSAL SYSTEMS SHALL BE APPROVED BY THE COUNTY ENGINEER.
32. THE LOCATION OF ALL SANITARY DISPOSAL SYSTEMS SHALL BE APPROVED BY THE COUNTY ENGINEER.
33. THE LOCATION OF ALL SANITARY DISPOSAL SYSTEMS SHALL BE APPROVED BY THE COUNTY ENGINEER.
34. THE LOCATION OF ALL SANITARY DISPOSAL SYSTEMS SHALL BE APPROVED BY THE COUNTY ENGINEER.
35. THE LOCATION OF ALL SANITARY DISPOSAL SYSTEMS SHALL BE APPROVED BY THE COUNTY ENGINEER.
36. THE LOCATION OF ALL SANITARY DISPOSAL SYSTEMS SHALL BE APPROVED BY THE COUNTY ENGINEER.
37. THE LOCATION OF ALL SANITARY DISPOSAL SYSTEMS SHALL BE APPROVED BY THE COUNTY ENGINEER.
38. THE LOCATION OF ALL SANITARY DISPOSAL SYSTEMS SHALL BE APPROVED BY THE COUNTY ENGINEER.
39. THE LOCATION OF ALL SANITARY DISPOSAL SYSTEMS SHALL BE APPROVED BY THE COUNTY ENGINEER.
40. THE LOCATION OF ALL SANITARY DISPOSAL SYSTEMS SHALL BE APPROVED BY THE COUNTY ENGINEER.
41. THE LOCATION OF ALL SANITARY DISPOSAL SYSTEMS SHALL BE APPROVED BY THE COUNTY ENGINEER.
42. THE LOCATION OF ALL SANITARY DISPOSAL SYSTEMS SHALL BE APPROVED BY THE COUNTY ENGINEER.
43. THE LOCATION OF ALL SANITARY DISPOSAL SYSTEMS SHALL BE APPROVED BY THE COUNTY ENGINEER.
44. THE LOCATION OF ALL SANITARY DISPOSAL SYSTEMS SHALL BE APPROVED BY THE COUNTY ENGINEER.
45. THE LOCATION OF ALL SANITARY DISPOSAL SYSTEMS SHALL BE APPROVED BY THE COUNTY ENGINEER.
46. THE LOCATION OF ALL SANITARY DISPOSAL SYSTEMS SHALL BE APPROVED BY THE COUNTY ENGINEER.
47. THE LOCATION OF ALL SANITARY DISPOSAL SYSTEMS SHALL BE APPROVED BY THE COUNTY ENGINEER.
48. THE LOCATION OF ALL SANITARY DISPOSAL SYSTEMS SHALL BE APPROVED BY THE COUNTY ENGINEER.
49. THE LOCATION OF ALL SANITARY DISPOSAL SYSTEMS SHALL BE APPROVED BY THE COUNTY ENGINEER.
50. THE LOCATION OF ALL SANITARY DISPOSAL SYSTEMS SHALL BE APPROVED BY THE COUNTY ENGINEER.
51. THE LOCATION OF ALL SANITARY DISPOSAL SYSTEMS SHALL BE APPROVED BY THE COUNTY ENGINEER.
52. THE LOCATION OF ALL SANITARY DISPOSAL SYSTEMS SHALL BE APPROVED BY THE COUNTY ENGINEER.
53. THE LOCATION OF ALL SANITARY DISPOSAL SYSTEMS SHALL BE APPROVED BY THE COUNTY ENGINEER.
54. THE LOCATION OF ALL SANITARY DISPOSAL SYSTEMS SHALL BE APPROVED BY THE COUNTY ENGINEER.
55. THE LOCATION OF ALL SANITARY DISPOSAL SYSTEMS SHALL BE APPROVED BY THE COUNTY ENGINEER.
56. THE LOCATION OF ALL SANITARY DISPOSAL SYSTEMS SHALL BE APPROVED BY THE COUNTY ENGINEER.
57. THE LOCATION OF ALL SANITARY DISPOSAL SYSTEMS SHALL BE APPROVED BY THE COUNTY ENGINEER.
58. THE LOCATION OF ALL SANITARY DISPOSAL SYSTEMS SHALL BE APPROVED BY THE COUNTY ENGINEER.
59. THE LOCATION OF ALL SANITARY DISPOSAL SYSTEMS SHALL BE APPROVED BY THE COUNTY ENGINEER.
60. THE LOCATION OF ALL SANITARY DISPOSAL SYSTEMS SHALL BE APPROVED BY THE COUNTY ENGINEER.
61. THE LOCATION OF ALL SANITARY DISPOSAL SYSTEMS SHALL BE APPROVED BY THE COUNTY ENGINEER.
62. THE LOCATION OF ALL SANITARY DISPOSAL SYSTEMS SHALL BE APPROVED BY THE COUNTY ENGINEER.
63. THE LOCATION OF ALL SANITARY DISPOSAL SYSTEMS SHALL BE APPROVED BY THE COUNTY ENGINEER.
64. THE LOCATION OF ALL SANITARY DISPOSAL SYSTEMS SHALL BE APPROVED BY THE COUNTY ENGINEER.
65. THE LOCATION OF ALL SANITARY DISPOSAL SYSTEMS SHALL BE APPROVED BY THE COUNTY ENGINEER.
66. THE LOCATION OF ALL SANITARY DISPOSAL SYSTEMS SHALL BE APPROVED BY THE COUNTY ENGINEER.
67. THE LOCATION OF ALL SANITARY DISPOSAL SYSTEMS SHALL BE APPROVED BY THE COUNTY ENGINEER.
68. THE LOCATION OF ALL SANITARY DISPOSAL SYSTEMS SHALL BE APPROVED BY THE COUNTY ENGINEER.
69. THE LOCATION OF ALL SANITARY DISPOSAL SYSTEMS SHALL BE APPROVED BY THE COUNTY ENGINEER.
70. THE LOCATION OF ALL SANITARY DISPOSAL SYSTEMS SHALL BE APPROVED BY THE COUNTY ENGINEER.
71. THE LOCATION OF ALL SANITARY DISPOSAL SYSTEMS SHALL BE APPROVED BY THE COUNTY ENGINEER.
72. THE LOCATION OF ALL SANITARY DISPOSAL SYSTEMS SHALL BE APPROVED BY THE COUNTY ENGINEER.
73. THE LOCATION OF ALL SANITARY DISPOSAL SYSTEMS SHALL BE APPROVED BY THE COUNTY ENGINEER.
74. THE LOCATION OF ALL SANITARY DISPOSAL SYSTEMS SHALL BE APPROVED BY THE COUNTY ENGINEER.
75. THE LOCATION OF ALL SANITARY DISPOSAL SYSTEMS SHALL BE APPROVED BY THE COUNTY ENGINEER.
76. THE LOCATION OF ALL SANITARY DISPOSAL SYSTEMS SHALL BE APPROVED BY THE COUNTY ENGINEER.
77. THE LOCATION OF ALL SANITARY DISPOSAL SYSTEMS SHALL BE APPROVED BY THE COUNTY ENGINEER.
78. THE LOCATION OF ALL SANITARY DISPOSAL SYSTEMS SHALL BE APPROVED BY THE COUNTY ENGINEER.
79. THE LOCATION OF ALL SANITARY DISPOSAL SYSTEMS SHALL BE APPROVED BY THE COUNTY ENGINEER.
80. THE LOCATION OF ALL SANITARY DISPOSAL SYSTEMS SHALL BE APPROVED BY THE COUNTY ENGINEER.
81. THE LOCATION OF ALL SANITARY DISPOSAL SYSTEMS SHALL BE APPROVED BY THE COUNTY ENGINEER.
82. THE LOCATION OF ALL SANITARY DISPOSAL SYSTEMS SHALL BE APPROVED BY THE COUNTY ENGINEER.
83. THE LOCATION OF ALL SANITARY DISPOSAL SYSTEMS SHALL BE APPROVED BY THE COUNTY ENGINEER.
84. THE LOCATION OF ALL SANITARY DISPOSAL SYSTEMS SHALL BE APPROVED BY THE COUNTY ENGINEER.
85. THE LOCATION OF ALL SANITARY DISPOSAL SYSTEMS SHALL BE APPROVED BY THE COUNTY ENGINEER.
86. THE LOCATION OF ALL SANITARY DISPOSAL SYSTEMS SHALL BE APPROVED BY THE COUNTY ENGINEER.
87. THE LOCATION OF ALL SANITARY DISPOSAL SYSTEMS SHALL BE APPROVED BY THE COUNTY ENGINEER.
88. THE LOCATION OF ALL SANITARY DISPOSAL SYSTEMS SHALL BE APPROVED BY THE COUNTY ENGINEER.
89. THE LOCATION OF ALL SANITARY DISPOSAL SYSTEMS SHALL BE APPROVED BY THE COUNTY ENGINEER.
90. THE LOCATION OF ALL SANITARY DISPOSAL SYSTEMS SHALL BE APPROVED BY THE COUNTY ENGINEER.
91. THE LOCATION OF ALL SANITARY DISPOSAL SYSTEMS SHALL BE APPROVED BY THE COUNTY ENGINEER.
92. THE LOCATION OF ALL SANITARY DISPOSAL SYSTEMS SHALL BE APPROVED BY THE COUNTY ENGINEER.
93. THE LOCATION OF ALL SANITARY DISPOSAL SYSTEMS SHALL BE APPROVED BY THE COUNTY ENGINEER.
94. THE LOCATION OF ALL SANITARY DISPOSAL SYSTEMS SHALL BE APPROVED BY THE COUNTY ENGINEER.
95. THE LOCATION OF ALL SANITARY DISPOSAL SYSTEMS SHALL BE APPROVED BY THE COUNTY ENGINEER.
96. THE LOCATION OF ALL SANITARY DISPOSAL SYSTEMS SHALL BE APPROVED BY THE COUNTY ENGINEER.
97. THE LOCATION OF ALL SANITARY DISPOSAL SYSTEMS SHALL BE APPROVED BY THE COUNTY ENGINEER.
98. THE LOCATION OF ALL SANITARY DISPOSAL SYSTEMS SHALL BE APPROVED BY THE COUNTY ENGINEER.
99. THE LOCATION OF ALL SANITARY DISPOSAL SYSTEMS SHALL BE APPROVED BY THE COUNTY ENGINEER.
100. THE LOCATION OF ALL SANITARY DISPOSAL SYSTEMS SHALL BE APPROVED BY THE COUNTY ENGINEER.

INTERCEPTOR DRAIN ELAVATION SCHEDULE TABLE

	A	B	C	D	E
GROUND	775.6	771.5	768.0	762.2	764.0
INVERT	772.6	768.5	OUT	764.2	OUT

CERTIFICATE OF ACCURACY
I hereby certify that this plan shows and describes land in a town and range within the county required by the Williamson County, Tennessee, with the exception of such variance, if any, as are noted in the margin of the Planning Commission and that it has been approved for recording in the office of the County Engineer.

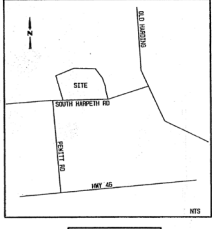
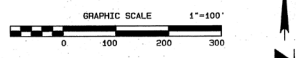
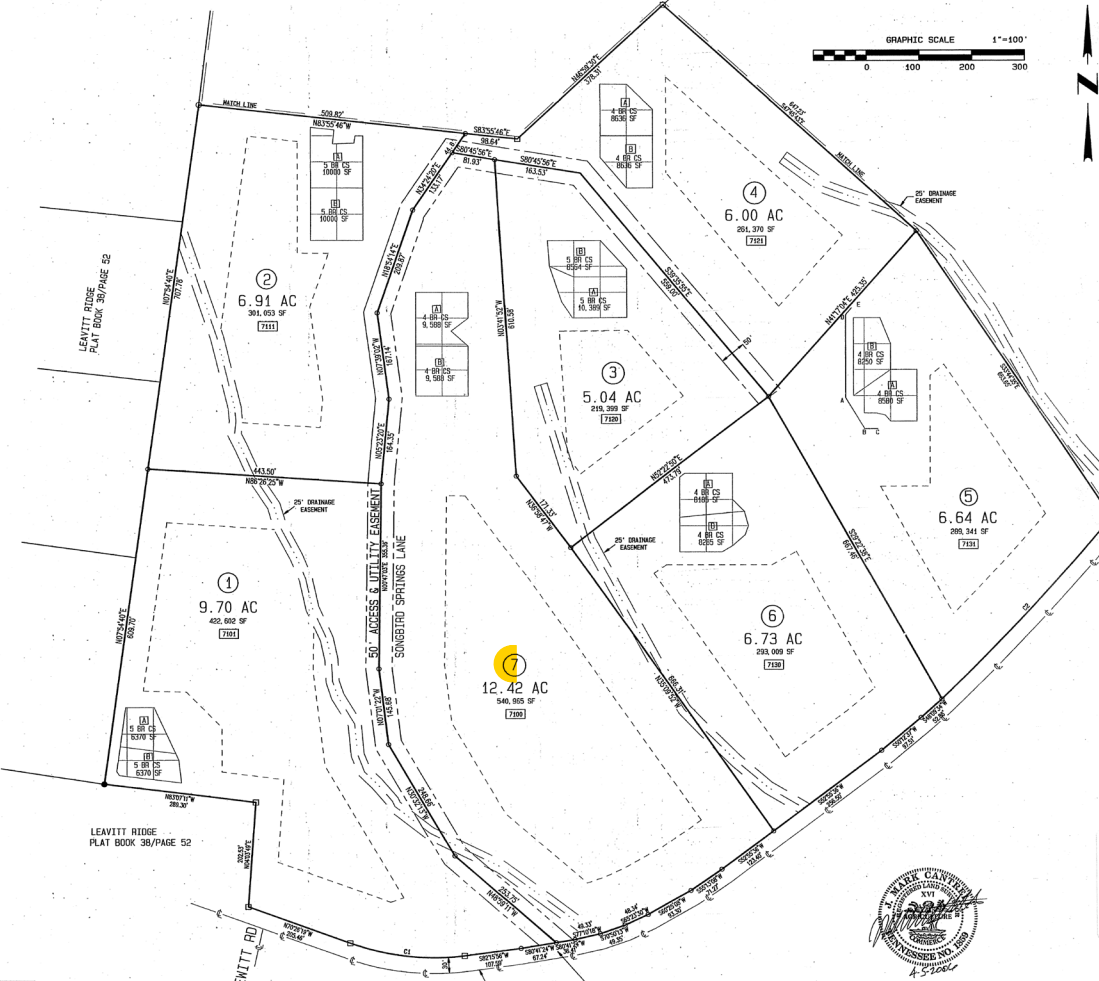
ASSURED SURVEY
4157 OLD HILLSBORO RD
FRANKLIN, TN 37064
615-599-7347

CERTIFICATE OF APPROVAL FOR RECORD
I hereby certify that the Subdivision plat shown herein has been found to comply with the Subdivision Regulations for Williamson County, Tennessee, with the exception of such variance, if any, as are noted in the margin of the Planning Commission and that it has been approved for recording in the office of the County Engineer.

RECORD
This is a portion of the property conveyed in Book 346A, PAGE 443, R.O.C.M.

CERTIFICATE OF GENERAL APPROVAL FOR INSTALLATION OF SUBSIDIARY SANITARY DISPOSAL SYSTEM WITH INTERCEPTOR
General approval is hereby granted for the proposed herein as being suitable for subsurface average disposal with the total area affected indicated.

LOCAL HEALTH AUTHORITY



LEGEND
● SHIP PIN FOUND
○ SHIP PIN SET
□ UTILITY POLE
○ WATERSHIP SET
-X- FENCE LINE



RECEIVED

APR 07 2006
WILSON CO.
PLAN. COM.

04/19/2006-10:19:18 AM
0618008
PLAT BOOK: 346A
PAGE: 47
P44/47

CURRENT ZONING REGULATION (R)
WILLIAMSON COUNTY REGIONAL PLANNING COMMISSION
STATE OF TENNESSEE

LARGE LOT EASEMENT SUBDIVISION
SONGBIRD SPRINGS
LOTS 1-7

TOTAL ACRES = 63.44	TOTAL LOTS = 7
MILES NEW ROADS = 0.00	ACRES NEW ROADS = 0.00
PROPERTY CENSUS	TOWNERS HOUSES: 22
PARKS: 58/82 OF TAX MAP 68	DEED BOOK 346A, PAGE 443
CIVIL DISTRICT: 12TH	
DATE: 04/04/2006 SCALE: 1" = 100' CLOSURE: 1/10,000	