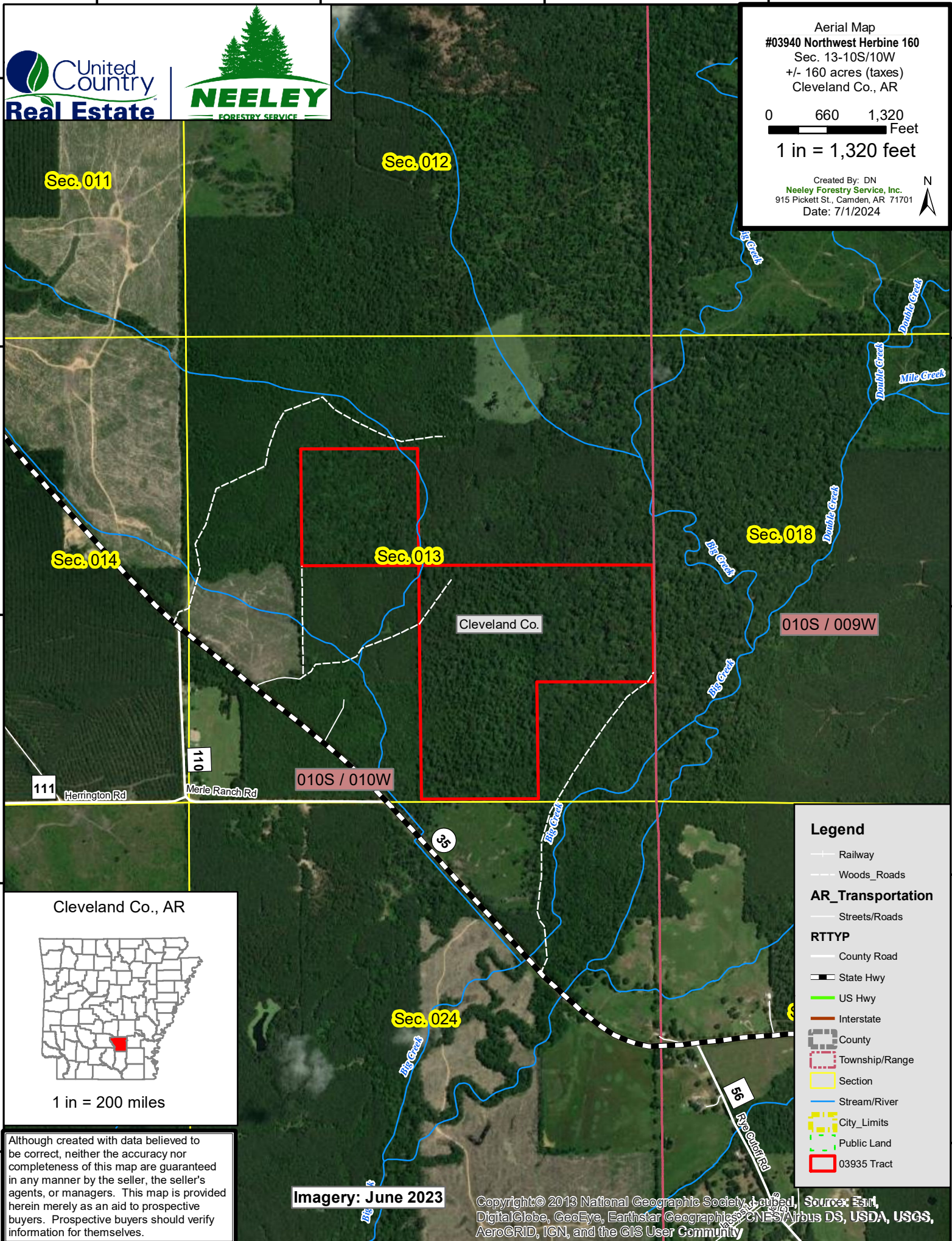




Aerial Map
#03940 Northwest Herbine 160
Sec. 13-10S/10W
+/- 160 acres (taxes)
Cleveland Co., AR

0 660 1,320 Feet
1 in = 1,320 feet

Created By: DN
Neeley Forestry Service, Inc.
915 Pickett St., Camden, AR 71701
Date: 7/1/2024



Cleveland Co., AR



1 in = 200 miles

Although created with data believed to be correct, neither the accuracy nor completeness of this map are guaranteed in any manner by the seller, the seller's agents, or managers. This map is provided herein merely as an aid to prospective buyers. Prospective buyers should verify information for themselves.

Imagery: June 2023

Copyright © 2013 National Geographic Society, DigitalGlobe, GeoEye, Earthstar Geographics, CNES/Airbus DS, USDA, USGS, AeroGRID, IGN, and the GIS User Community

Legend

— Railway

--- Woods_Roads

AR_Transportation

— Streets/Roads

RTTYP

— County Road

— State Hwy

— US Hwy

— Interstate

— County

— Township/Range

— Section

— Stream/River

— City_Limits

— Public Land

— 03935 Tract