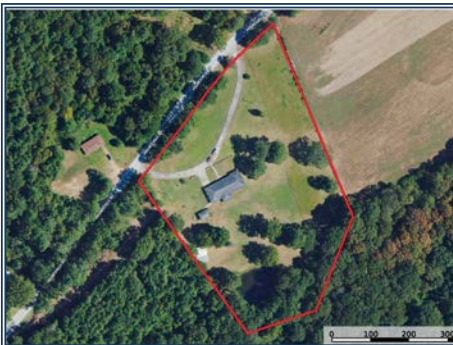




This ranch-style country home in Lawrence County, MS, sits on 5.5 acres of land with a concrete circle driveway. Boasting 2758 sq ft of living space, it offers tranquility and comfort. The property includes a pond, two workshops (one heated/cooled), a 22KW propane generator, and a generous garden spot. Inside, a spacious living area, formal dining room, large kitchen, laundry room with half bath and fold-down bed, walk-in pantry, and master suite with private office and full bathroom provide ample amenities. Ideal for hosting gatherings and outdoor enjoyment, this property offers a rare opportunity to own a large country home with land at an affordable price. Viewing by appointment to qualified buyers. Schedule your showing today!

664 Holmesville Road, Jayess, MS

31.394333, -90.221491 GPS



\$279,500

5.5 Acres
3 Bed/2.5 Bath
MLS #141354



Scott Campbell
scottcampbell050@gmail.com
Office: (601) 250-0017
Cell: (601) 248-4595
SouthernStatesRealty.com