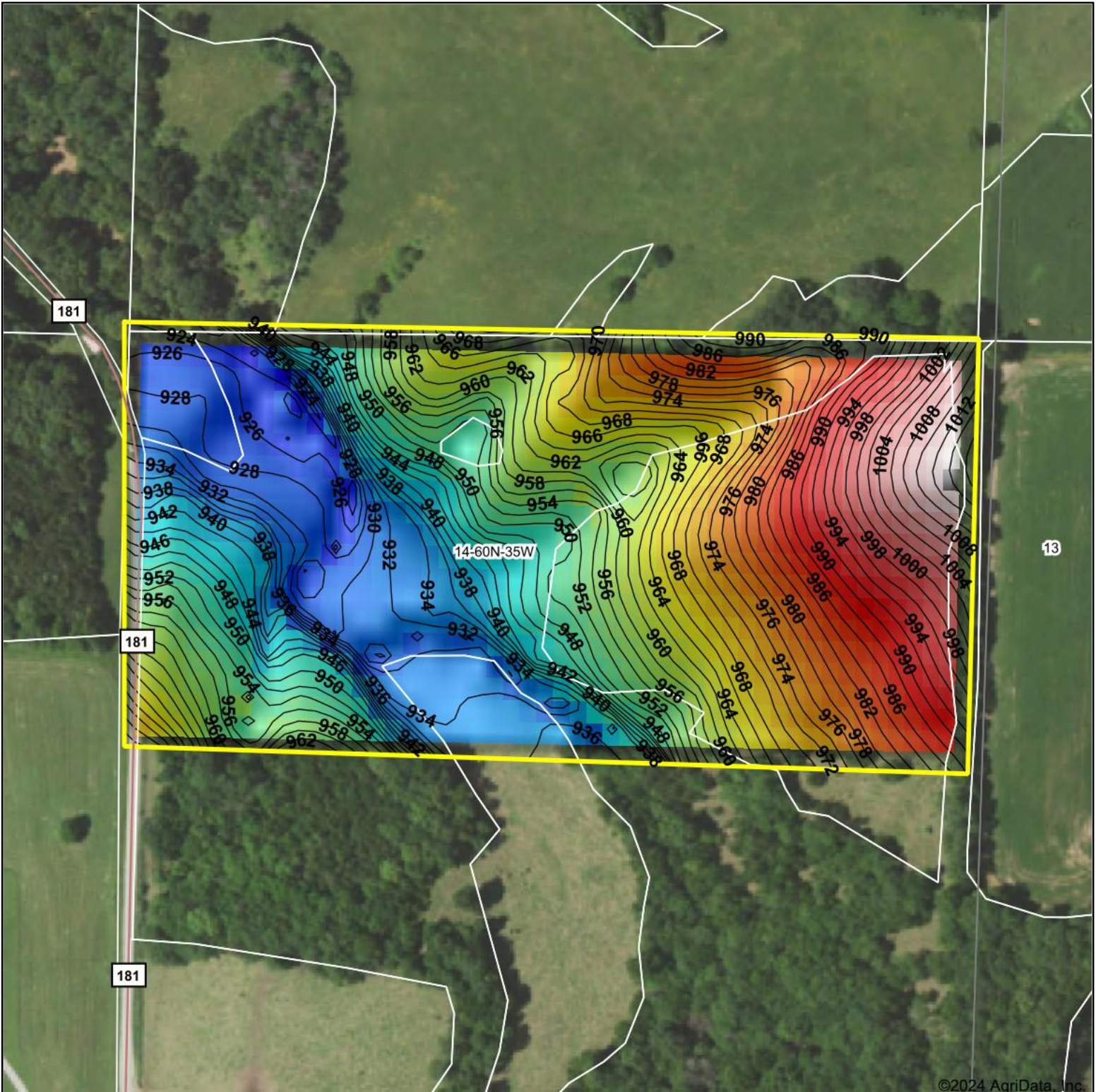
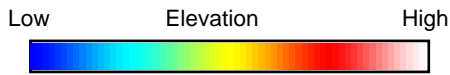


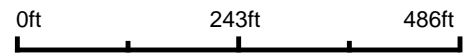
Topography Hillshade



©2024 AgriData, Inc.



Source: USGS 10 meter dem
 Interval(ft): 2
 Min: 920.3
 Max: 1,016.6
 Range: 96.3
 Average: 960.3
 Standard Deviation: 24.21 ft



14-60N-35W
Andrew County
Missouri

Boundary Center: 40° 0' 59.57, -94° 47' 9.26

United Country
 Property Solutions, LLC

Maps Provided By:



© AgriData, Inc. 2023 www.AgriDataInc.com

Field borders provided by Farm Service Agency as of 5/21/2008.