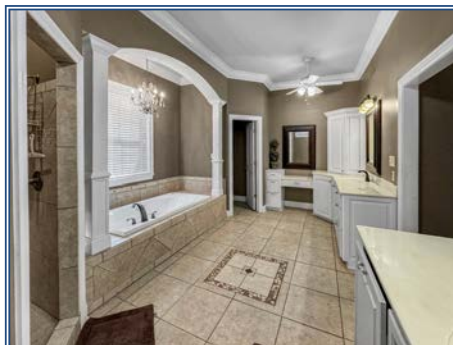
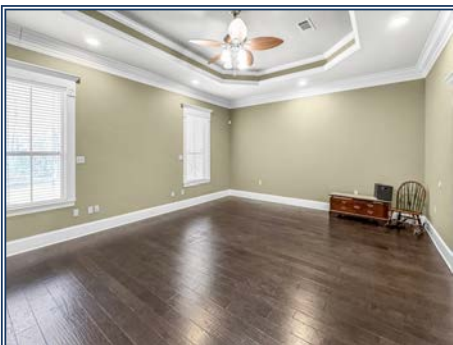




5BR 4BA 4300 sq ft home for sale in North Pike School District with 2.87 acres of land located west of I-55 on Kori LN just off Kenna Rd. Home features a double garage, paved driveway, huge back porch all situated on a partially wooded lot with privacy and nice views. The interior of the home features a gorgeous custom kitchen with cherry cabinets, granite counters, dual fuel range, and stainless-steel appliances. The home has 3 AC units, one of which is brand new, a huge master suite with dual walk-in closets, whirlpool tub and large walk-in shower. It also features 10 ft ceilings with custom crown molding, formal dining room, office and eating area. The upstairs has 2 BR's a bathroom and a large game room or upstairs living room. This home is perfect for the large family and is priced to sell. Shown to qualified buyers by appointment.

1011 Kori Lane, Summit, MS

31.328646, -90.531289 GPS



\$489,000

2.87± Acres
MLS #140896



Scott Campbell
scampbellunited@bellsouth.net
Office: (601) 250-0017
Cell: (601) 248-4595
SouthernStatesRealty.com