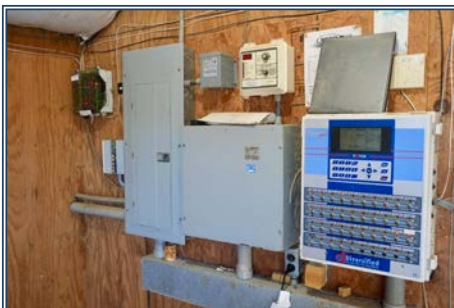




Explore the potential of a delightful 6-house broiler poultry farm situated on 17 acres in Lena, MS. The poultry houses, measuring a substantial 42x450' each, showcase a well-maintained and practical design with control rooms conveniently placed at the end for seamless operations. Constructed between 2003 and 2005, these houses retain their excellent condition, contributing to the farm's aesthetic appeal. With a commendable income history and a longstanding contract with a prominent national poultry company, this farm offers a secure and lucrative investment. The seller specializes in cultivating a 4.75 lb. chicken, further enhancing the farm's profitability. Modern efficiency is assured with state-of-the-art poultry technology, including Rotem controllers, Farm Alarm, Lubin Drinkers, Spaceray Brooders, Acme fans, Grower Select feeders, inlet doors, and cool cells. Essential features comprise 2 generators, 2 wells, a litter/compost shed, and convenient access to community water. The well-maintained roads and grounds, free of standing water, enhance the overall charm. A small mobile home is available for farm personnel. Lena, MS, situated in Scott County, proves to be an ideal location for both residence and poultry business, boasting three major poultry companies and numerous retail outlets for supplies and parts.

1941 Cash Road, Lena, MS

32.563315, -89.560944 GPS



6 House Broiler  
Farm  
17± Acres  
MLS #140758

**\$1,190,000**



**Jeff Daughdrill**  
Poultry Specialist  
jeffdaughdrill@bellsouth.net  
Office: (601) 250-0017  
Cell: (601) 810-5511  
SouthernStatesRealty.com