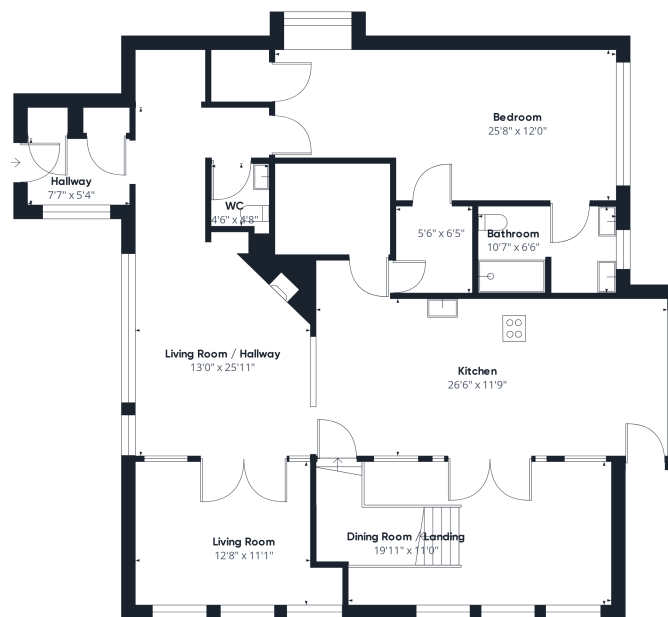




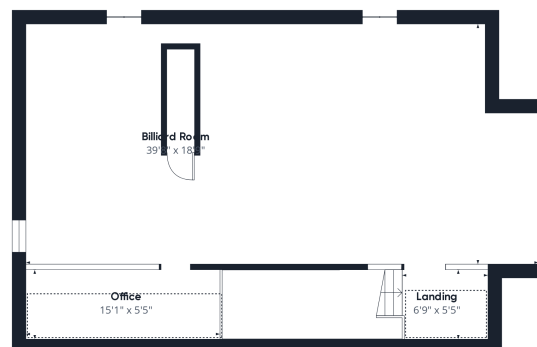
Floor 1



Floor 2



Floor 3



Floor 4

Approximate total area⁽¹⁾

5716.53 ft²

Reduced headroom

187.01 ft²

(1) Excluding balconies and terraces

 Reduced headroom
(below 1.5m/4.92ft)

While every attempt has been made to ensure accuracy, all measurements are approximate, not to scale. This floor plan is for illustrative purposes only.

GIRAFFE360