



**Trey Meacham**

meachamandassociatesins@gmail.com

Office: (601) 250-0017

Cell: (601) 622-1974

**SouthernStatesRealty.com**



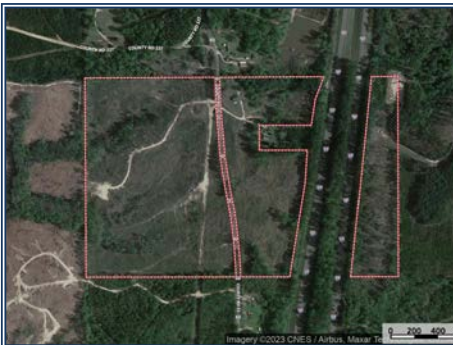
**SOUTHERN  
STATES REALTY**



Road Frontage, Road Frontage, Road Frontage! Welcome to The Walker 81 Acres in Jasper County, MS. This is a fantastic tract with lots of possibilities. Timber has been harvested and this tract is a blank canvas. You can set this property up how you want for development, homesite, recreational hunting land. There is tons of road frontage along I-59 that could create multiple commercial marketing opportunities on both sides of the interstate. 23 and 46 acres has over 1600ft of road frontage on CR 33 which offers many different possibilities. This tract offers amazing hunting potential. Jasper County is known for its tremendous turkey population and great deer hunting. There is an old dwelling on the 23 acres that is included. Land and Home place being sold as is! Call your Favorite Realtor today to schedule a showing.

**CR 33, Heidelberg, MS**

**31.860882, -89.050500 GPS**



**\$153,900**

**81± Acres  
MLS #4061451**

