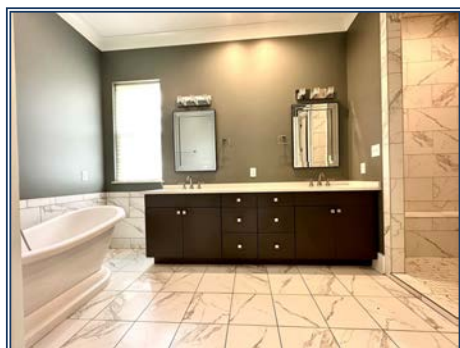
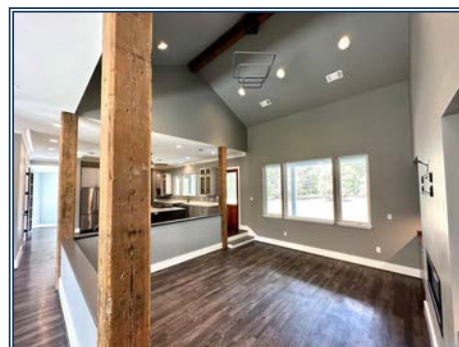
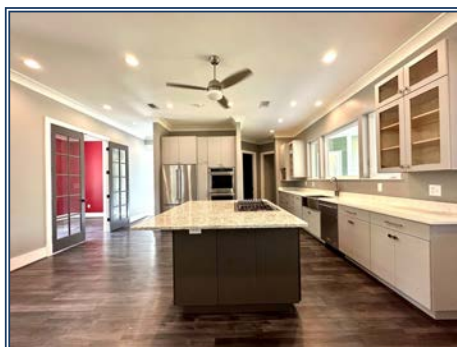




Smell the honeysuckle...Just around the Riverbend! Newer construction, open concept split plan home for sale snuggled into the sleepy community of Holmesville, MS, just down the street from quaint historic buildings and a historical marker outlining details of the 1812 war which was fought in that area! Tons of history in this unincorporated village. This luxury home boasts a beautiful open concept kitchen overlooking a sunken den area with designer lighting and wall fireplace insert. The children's wing hosts a bonus room and full bath over the garage, and the primary bedroom wing includes a spa like en-suite bathroom, double walk-in closets and a door to the back porch for additional entry. The home sits near the road for convenience, but the acreage has drivable trails to the Bogue Chitto River where you will find over 1,300 feet of your very own river frontage! Private Remarks: Home was built with quality in mind, with spray foam insulation, Rinnai instant hot water heaters, and Trane A/C units. There is a pond on site as well as a road system to the river. The home appears to be in excellent condition, and everything appears to be functioning well with minor cosmetic flaws. First Bank holds no warranties as to the functionality of the components of the home. This home is to be sold "as is" with no warranties.

9103 McComb Holmesville, McComb, MS

31.206072, -90.308900 GPS



\$395,000

13.16± Acres
MLS #139970



Kelly Parker
mkparker315@gmail.com
Office: (601) 250-0017
Cell: (601) 324-9760
SouthernStatesRealty.com