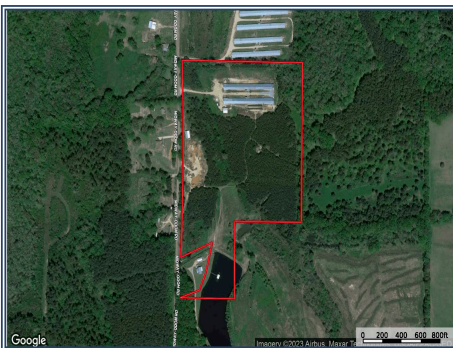




This is a modern poultry breeder farm offering a remarkable advantage in the form of solar power. Situated just north of Morton, Mississippi, within the Harpersville community, this farm spans 10 acres and features two impressive 42 x 500' Grade A breeder (egg) houses. These poultry houses, constructed in 2016, boast a long-term contract with the largest national poultry company in the United States, which is currently in the midst of an expansion. This presents an opportunity for the buyer to construct additional poultry houses. One of the standout features of this farm is the recent installation of solar panels, resulting in substantial reductions in electricity costs—particularly advantageous for breeder houses. Additionally, the farm is equipped with state-of-the-art Rotem Controllers, Big Dutchman Feeders, egg tables, Plastic Slates, Vent machines, and insulated egg rooms. A spacious litter/compost shed is also part of the package. Furthermore, the sale includes a tractor with a front-end loader and bushhog. If you would be interested in additional acreage, it is available for purchase. Please note that showings require a 48-hour advance notice, and prospective buyers must provide proof of their ability to secure financing. For further details and inquiries, please don't hesitate to reach out.

2257 Midway Odom Road, Harpersville, MS

32.515991, -89.500634 GPS



\$950,000

10± Acres
MLS #139968



Jeff Daughdrill
Poultry Specialist
jeffdaughdrill@bellsouth.net
Office: (601) 250-0017
Cell: (601) 810-5511
SouthernStatesRealty.com