



**Jett Blackburn  
Real Estate Inc.**



**724 Knight Dr, Hines OR**

**\$65,000**



Contact Card

Presented by  
Amaya Pallotta  
Jett Blackburn Real Estate  
707 Ponderosa Village, Burns OR 97720  
(541) 413-5776 (cell) \* (541) 413-5660 (office)  
amaya@jettblackburn.com  
www.jettblackburn.com



**ADDRESS:** 724 Knight Dr, Hines OR 97738

**LEGAL DESC.:** T23S R30E WM Sec 140B TL 1200x2100

**PRICE:** \$65,000

**TAXES:** \$236.95 (2022 - 2023)

**LOT SIZE:** 0.81 Acres

**FINANCING:** Cash or terms acceptable to seller

**WATER:** Private water system

The seller and his agent make these representations in good faith, from personal knowledge and experience. However, the buyer should inspect this property or cause this property to be inspected by knowledgeable persons so that the buyer may purchase without relying upon any representations made by the seller or his agent. Also, unless otherwise specified we, Jett Blackburn Real Estate, Inc. agents, represent the seller on all of our listings.

## REMARKS:

Exceptional opportunity in Eastern Oregon: Discover this generous .81-acre lot nestled in Garland Acres, providing breathtaking views of Harney County. Being amongst the few remaining lots, it offers a prime location, alongside well-maintained custom homes. Ready to build your dream home? Look no further! Zoned R-1 Residential.

**.81 Acre - Krauel**  
Oregon, AC +/-

United County  
Real Estate  
Jett Blackburn  
Real Estate Inc.

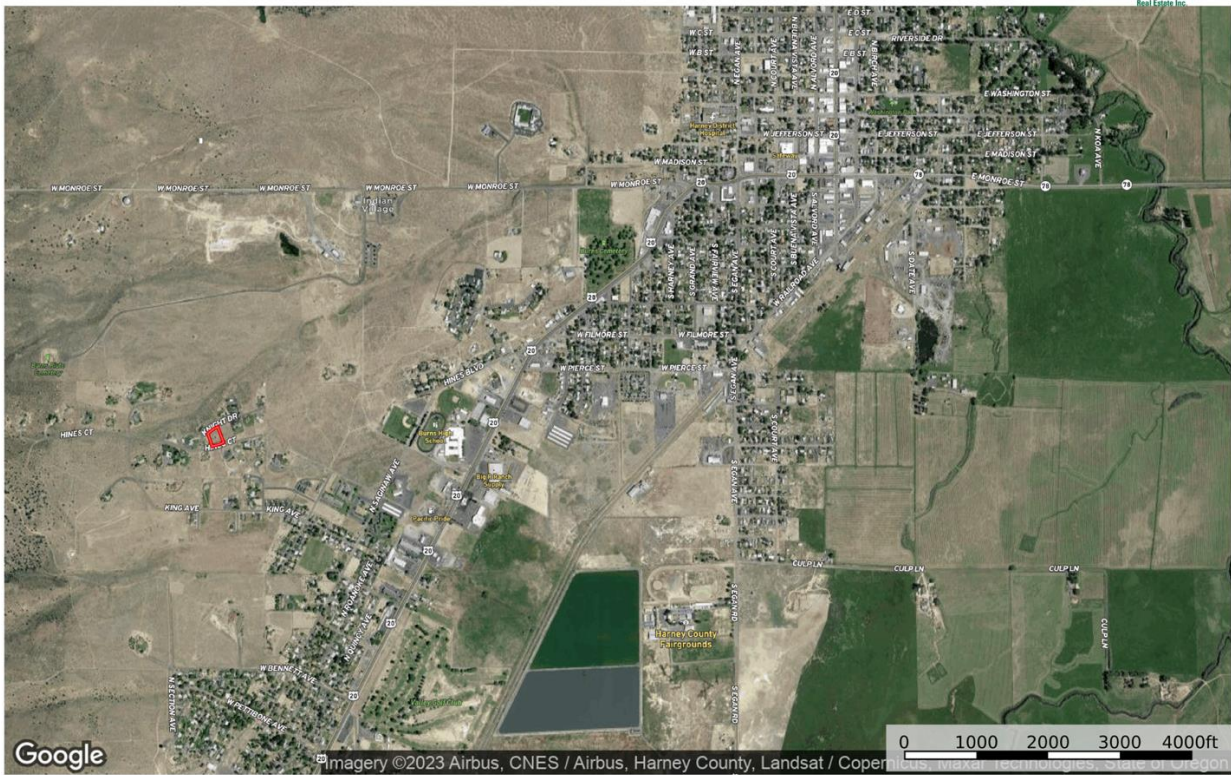


Boundary

United County Jett Blackburn Real Estate (map for illustration purposes only)  
P: 541-413-5668 office@jettblackburn.com 707 Ponderosa Village, Burns, OR 97720

**id.** The information contained herein was obtained from sources deemed to be reliable. Land id™ Services makes no warranties or guarantees as to the completeness or accuracy thereof.

**.81 Acre - Krauel**  
Oregon, AC +/-



United County Jett Blackburn Real Estate (map for illustration purposes only)  
P: 541-413-5668    office@jettblackburn.com    707 Ponderosa Village, Burns, OR 97720

**id.** The information contained herein was obtained from sources deemed to be reliable. Land id™ Services makes no warranties or guarantees as to the completeness or accuracy thereof.

