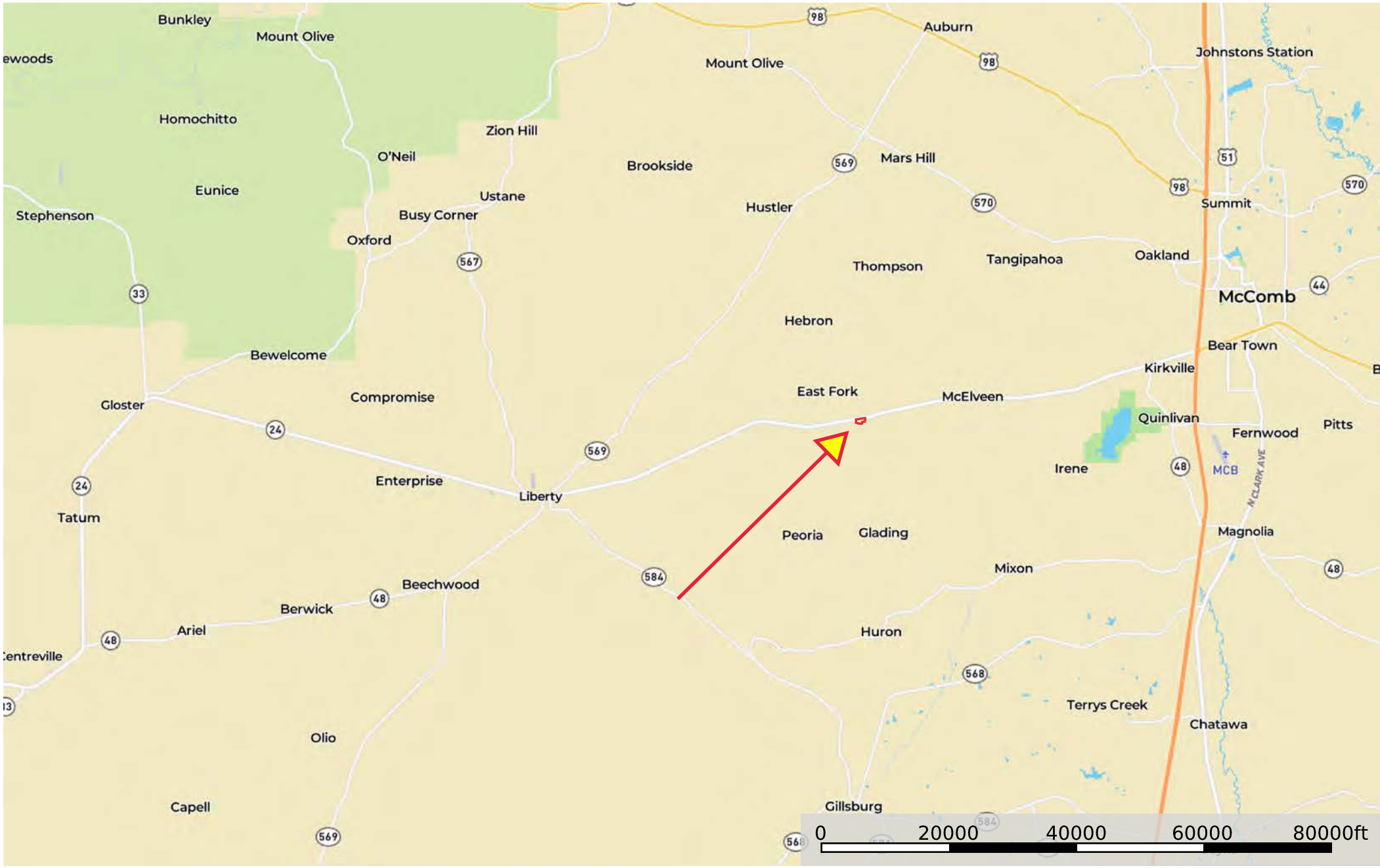


21.88 ac XXX Hwy24W TW
Amite County, Mississippi, 21.88 AC +/-



Boundary



Boundary



Boundary Stream, Intermittent River/Creek Water Body

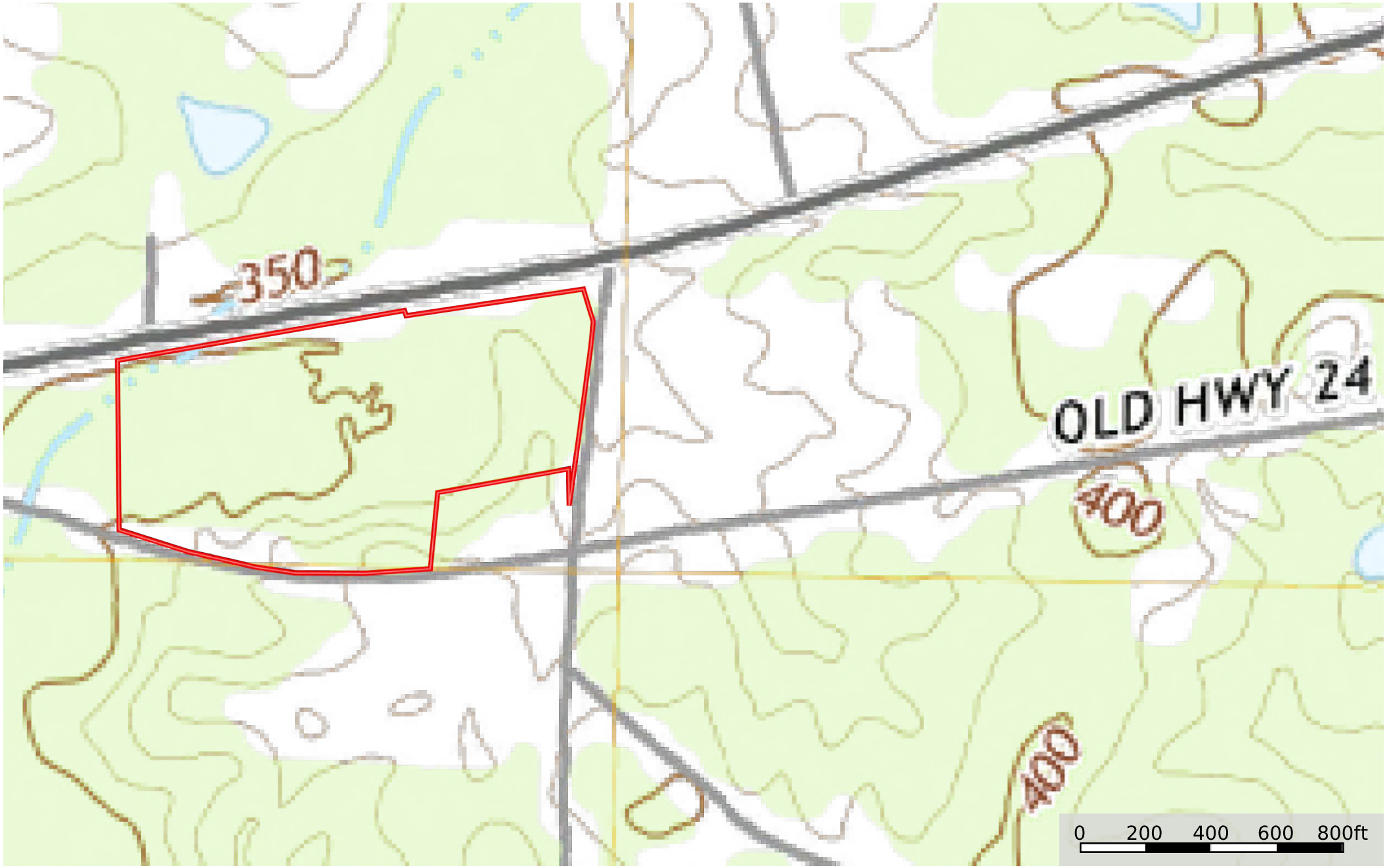


Google

Imagery ©2023 CNES / Airbus, Maxar Technologies, U.S. Geological Survey, GeoEye, GEBCO, DigitalGlobe, GeoEye, IGN, Aerotech, AeroGRID, IGN, Esri, Swire

- Boundary
- 100 Year Floodplain
- 500 Year Floodplain
- Floodway
- Special
- Unmapped/ Not Included
- Stream, Intermittent
- River/Creek
- Water Body

21.88 ac XXX Hwy24W TW
Amite County, Mississippi, 21.88 AC +/-



 Boundary