



Bullhead City

NEVADA

Boundary Cone

153

Parcel 1 - 59.17+/- acres

Entrance to Parcels

Parcel 1 - 36.01+/- acres

Rock Spring House

Scenic Overlook
Primitive Camp

10

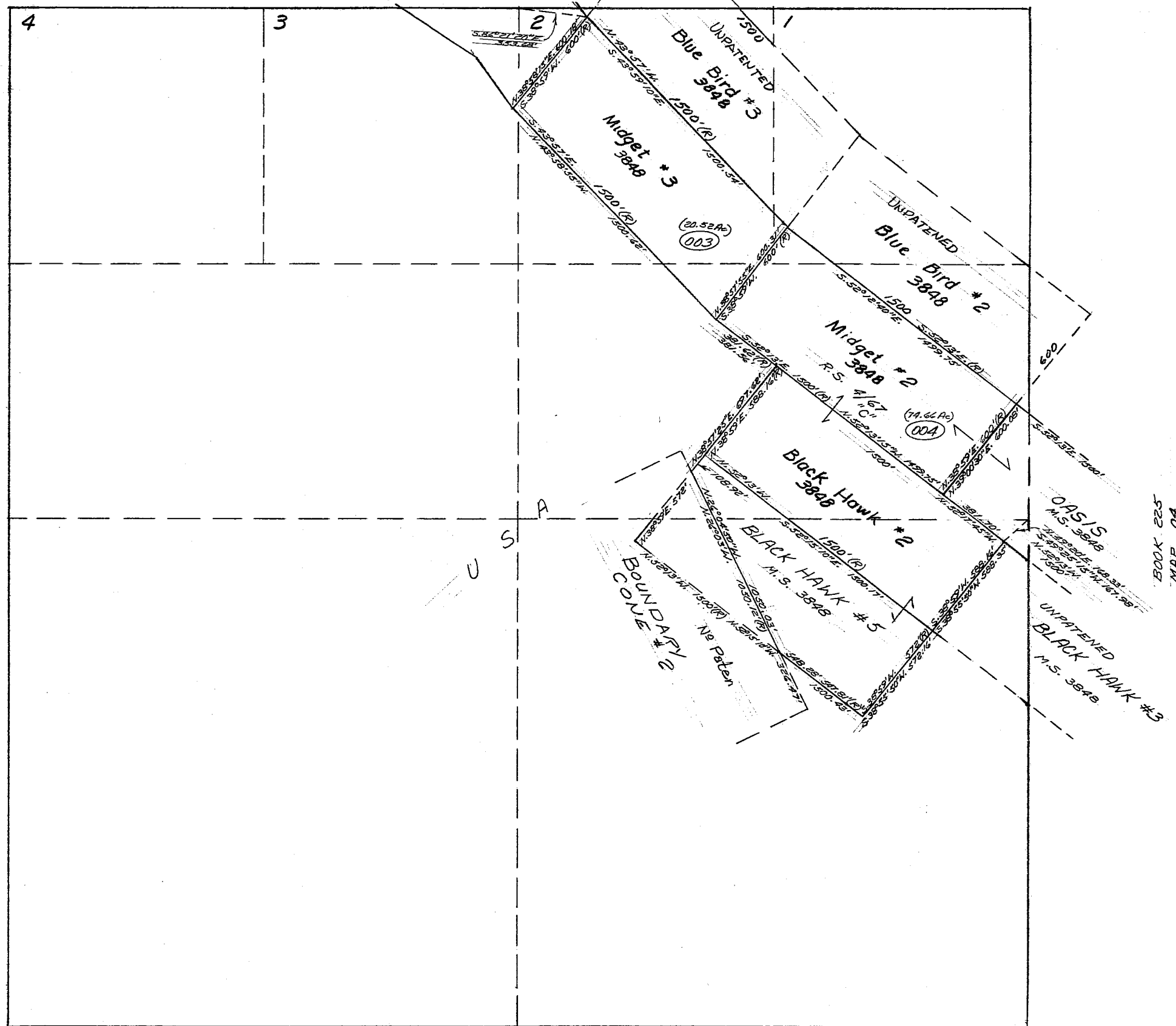
TOWNSHIP 18N RANGE 20W
SECTION 5

BOOK 225

VOID SEE GIS
12/12/2007

5 PATENTED GOLD MINING CLAIMS:
MIDGET #2, MIDGET #3, BLACK HAWK #2, BLACK HAWK #5, OASIS

MAP 05
CODE 1600



SCALE 1" = 600'

18N-20W-5
JUNE 14, 1995

MOHAVE COUNTY ASSESSOR

OWNER'S CERTIFICATION

KNOW ALL MEN BY THESE PRESENTS: THAT
MICHAEL & ELIZABETH SMITH

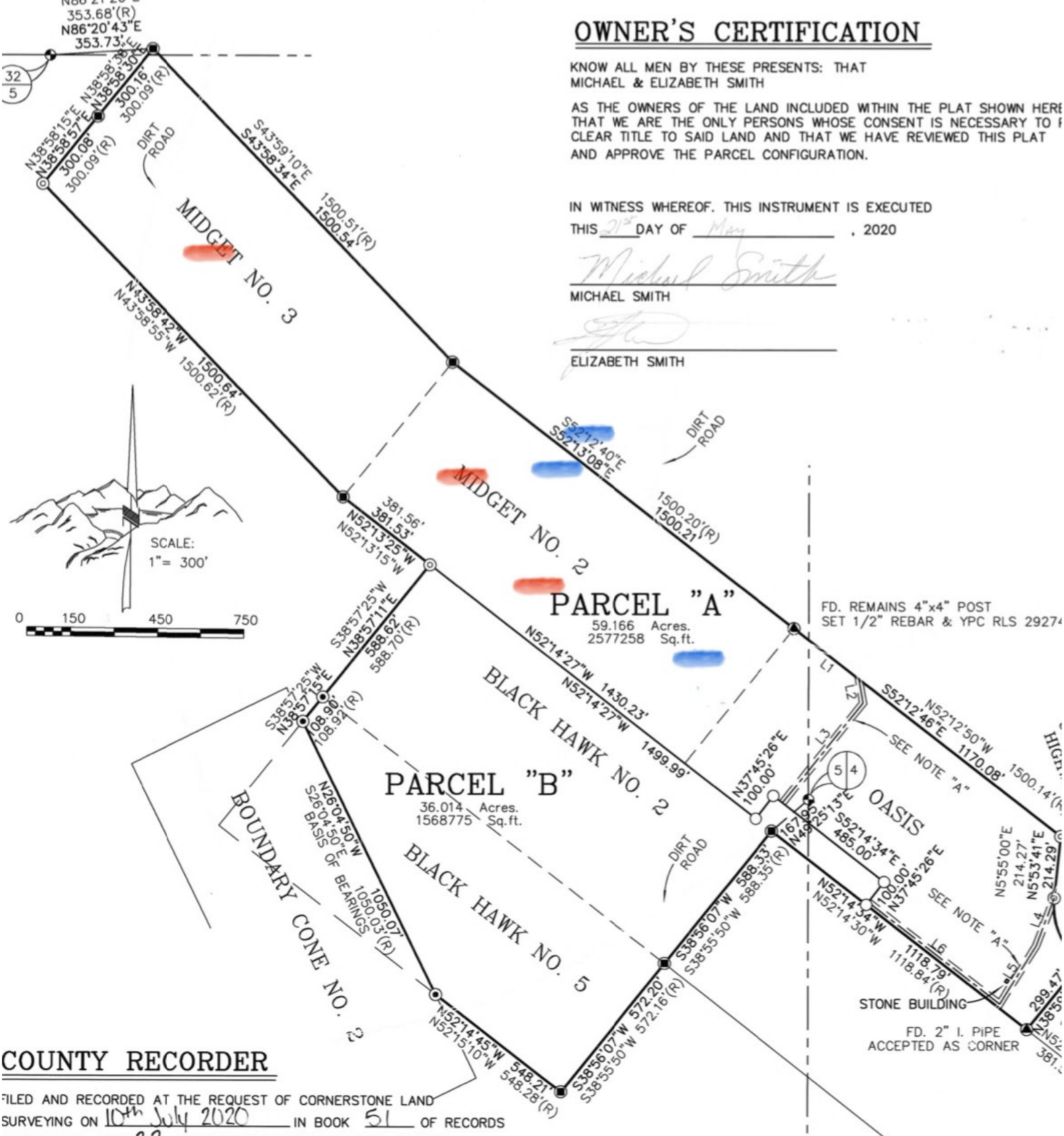
AS THE OWNERS OF THE LAND INCLUDED WITHIN THE PLAT SHOWN HERE
THAT WE ARE THE ONLY PERSONS WHOSE CONSENT IS NECESSARY TO
CLEAR TITLE TO SAID LAND AND THAT WE HAVE REVIEWED THIS PLAT
AND APPROVE THE PARCEL CONFIGURATION.

IN WITNESS WHEREOF, THIS INSTRUMENT IS EXECUTED

THIS 21st DAY OF May, 2020

Michael Smith
MICHAEL SMITH

Elizabeth Smith
ELIZABETH SMITH



COUNTY RECORDER

FILED AND RECORDED AT THE REQUEST OF CORNERSTONE LAND
SURVEYING ON 10th July 2020 IN BOOK 51 OF RECORDS
OF SURVEYS, PAGE 22 RECORDS OF MOHAVE COUNTY, ARIZONA.

BY Natalie Collings
DEPUTY RECORDER
BY Krish Blaw
RECORDER

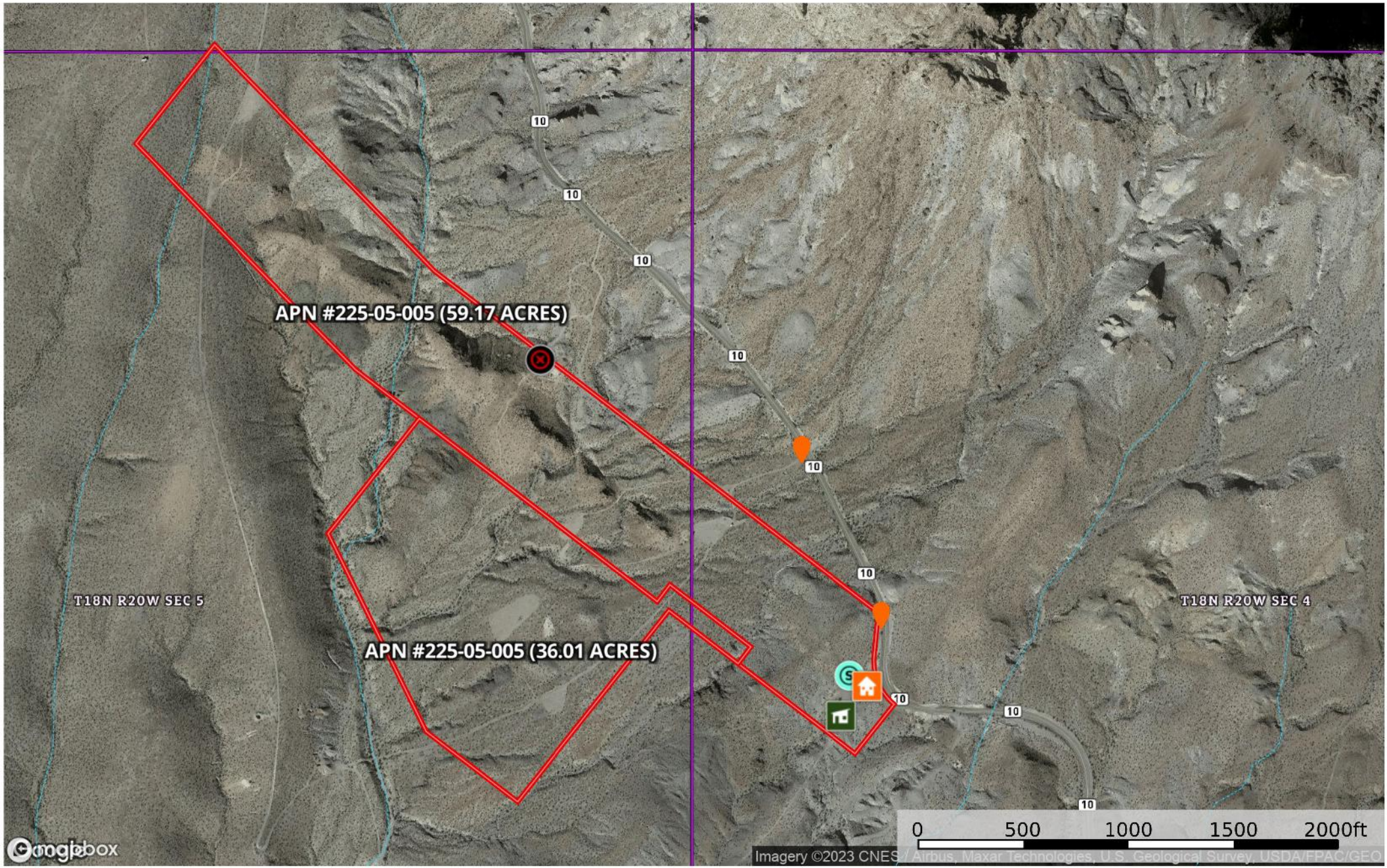


RECEPTION NUMBER 2020037867

Approximate locations of shafts and drifts.

95.18 Acres + 5 Patented Gold Mining Claims, Oatman, AZ

Arizona, 95.18 AC +/-

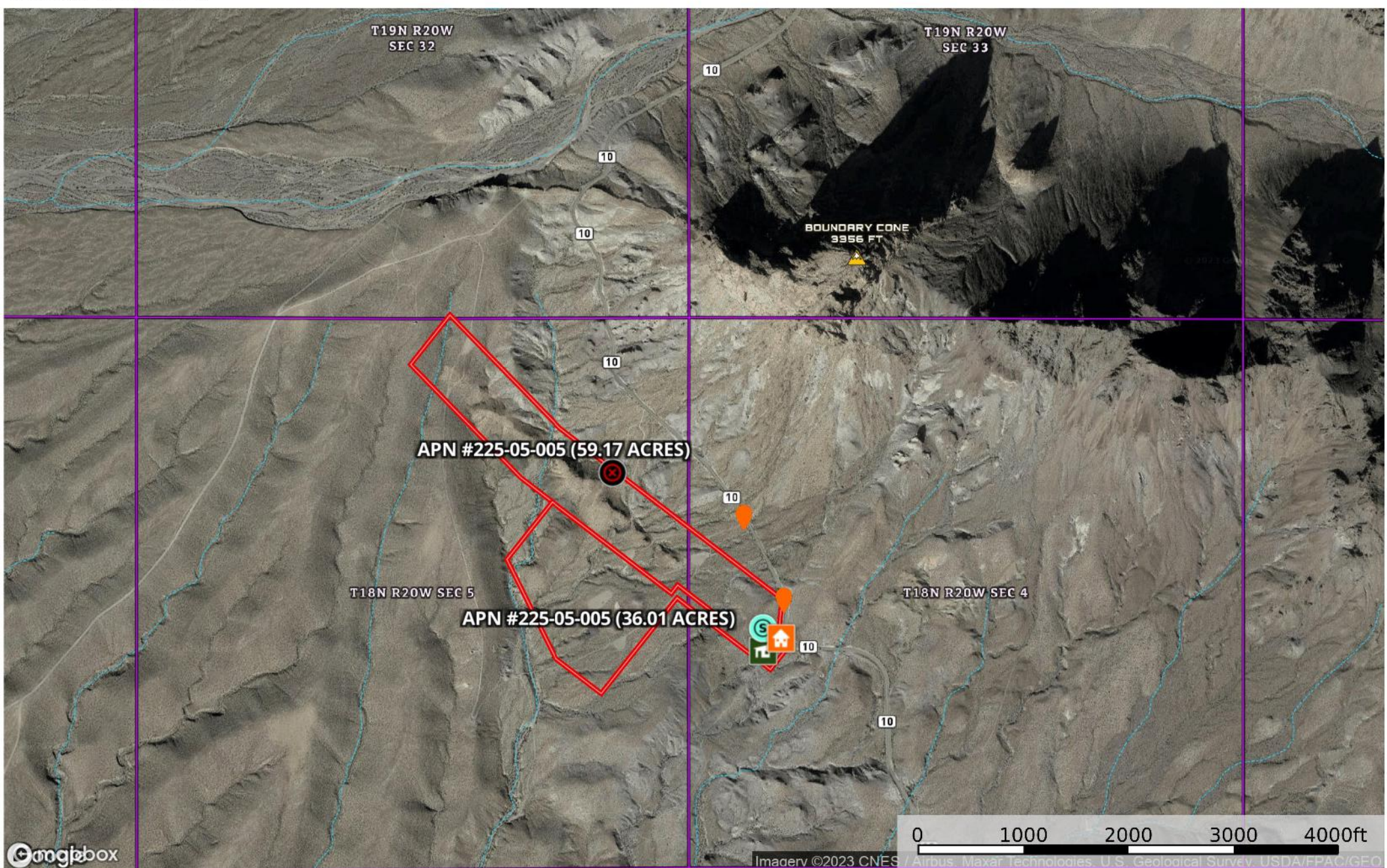


- Rock Bungalow
- Open Mine
- 95.17 Acres (Oatman, AZ)
- Rock Building
- 95 Acres (Oatman AZ)
- Natural Spring
- Boundary
- Stream, Intermittent
- River/Creek
- Water Body
- NOT AVAILABLE
- Voltage 0 - 9 KV
- Voltage 100 161 KV
- Voltage 220 287 KV
- Voltage 345 KV
- Voltage 500 KV

The information contained herein was obtained from sources deemed to be reliable. Land id™ Services makes no warranties or guarantees as to the completeness or accuracy thereof.

95.18 Acres + 5 Patented Gold Mining Claims, Oatman, AZ

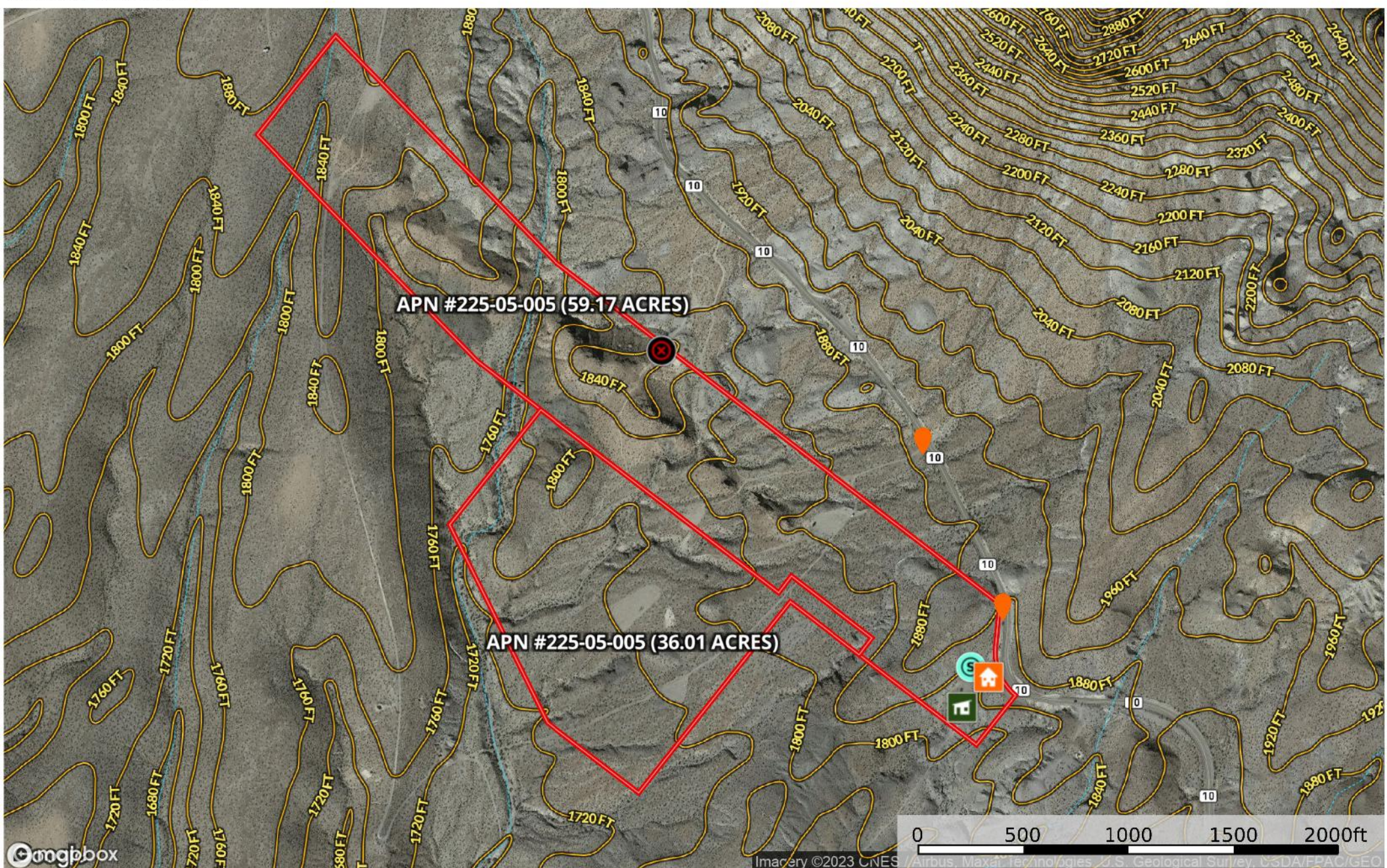
Arizona, 95.18 AC +/-



- Rock Bungal
- Open Mine
- 95.17 Acres (Oatman, AZ)
- Rock Building
- 95 Acres (Oatman AZ)
- Natural Sprir
- Boundary
- Stream, Intermittent
- River/Creek
- Water Body
- NOT AVAILABLE
- Voltage 0 - 9 KV
- Voltage 100 161 KV
- Voltage 220 287 KV
- Voltage 345 KV
- Voltage 500 KV

95.18 Acres + 5 Patented Gold Mining Claims, Oatman, AZ

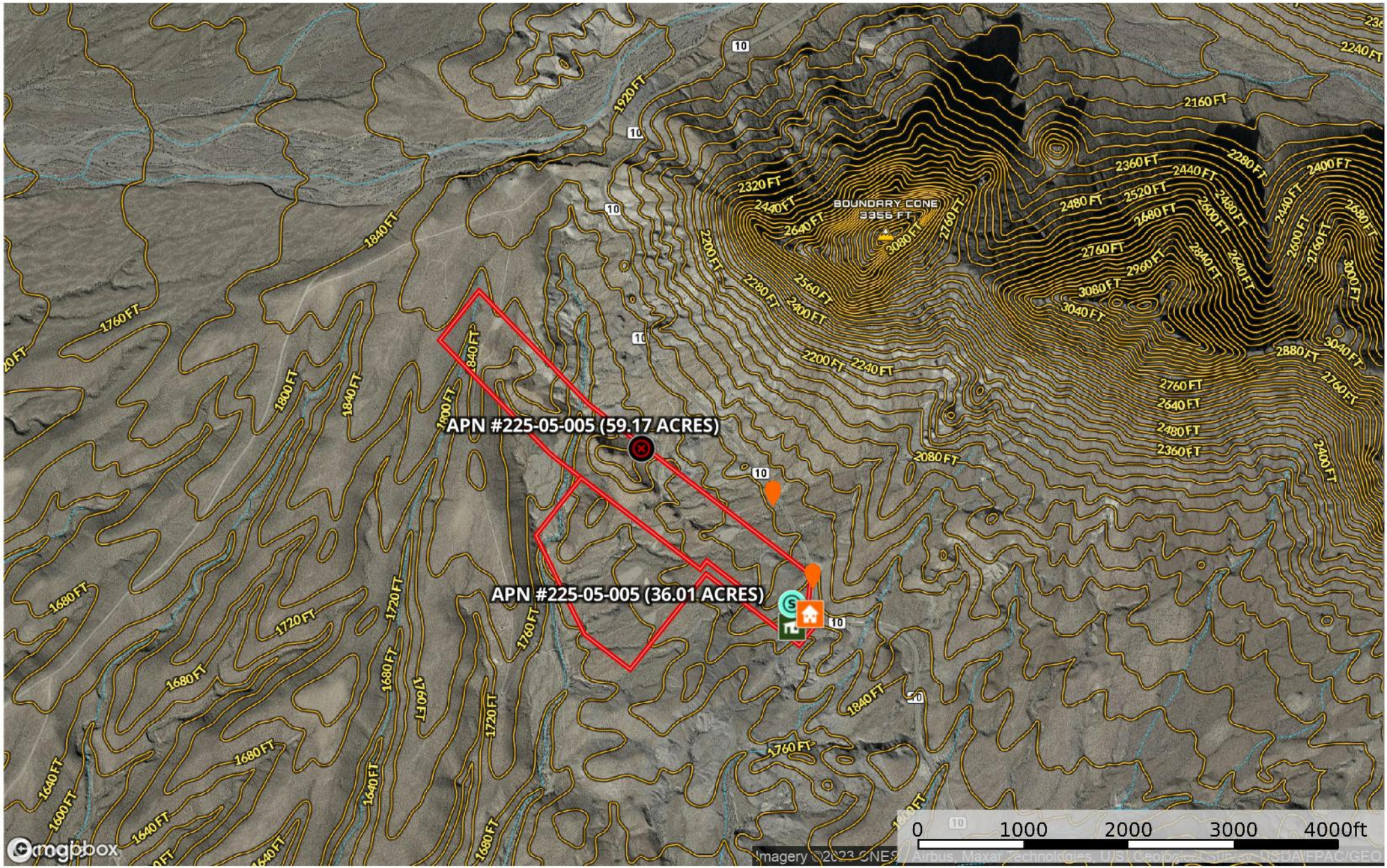
Arizona, 95.18 AC +/-



- Rock Bungalow
- Open Mine
- 95.17 Acres (Oatman, AZ)
- Rock Building
- 95 Acres (Oatman AZ)
- Natural Spring
- Boundary
- Stream, Intermittent
- River/Creek
- Water Body
- NOT AVAILABLE
- Voltage 0 - 9 KV
- Voltage 100 161 KV
- Voltage 220 287 KV
- Voltage 345 KV
- Voltage 500 KV

95.18 Acres + 5 Patented Gold Mining Claims, Oatman, AZ

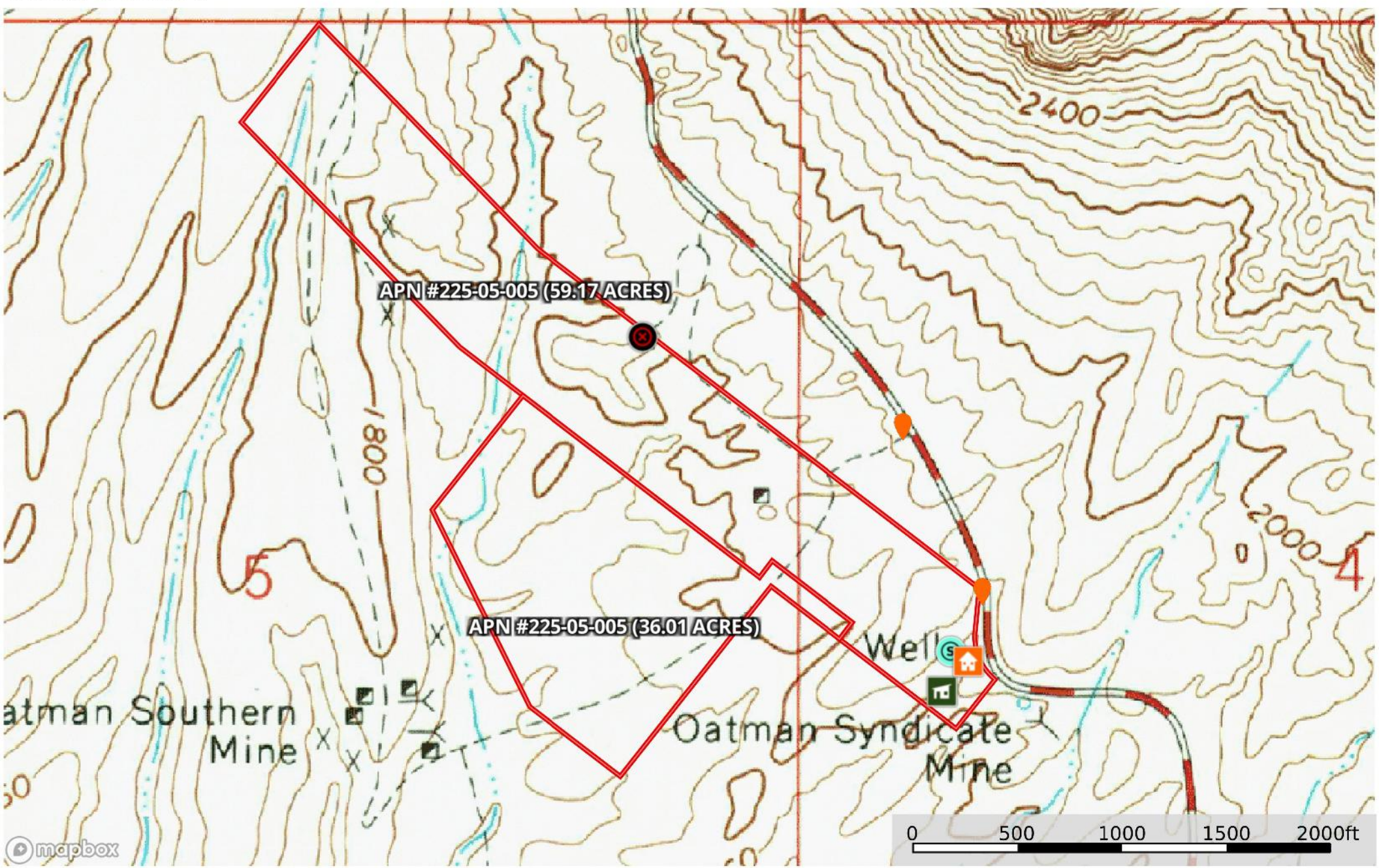
Arizona, 95.18 AC +/-



- Rock Bungal
- Open Mine
- 95.17 Acres (Oatman, AZ)
- Rock Building
- 95 Acres (Oatman AZ)
- Natural Spring
- Boundary
- Stream, Intermittent
- River/Creek
- Water Body
- NOT AVAILABLE
- Voltage 0 - 9 KV
- Voltage 100 161 KV
- Voltage 220 287 KV
- Voltage 345 KV
- Voltage 500 KV

95.18 Acres + 5 Patented Gold Mining Claims, Oatman, AZ

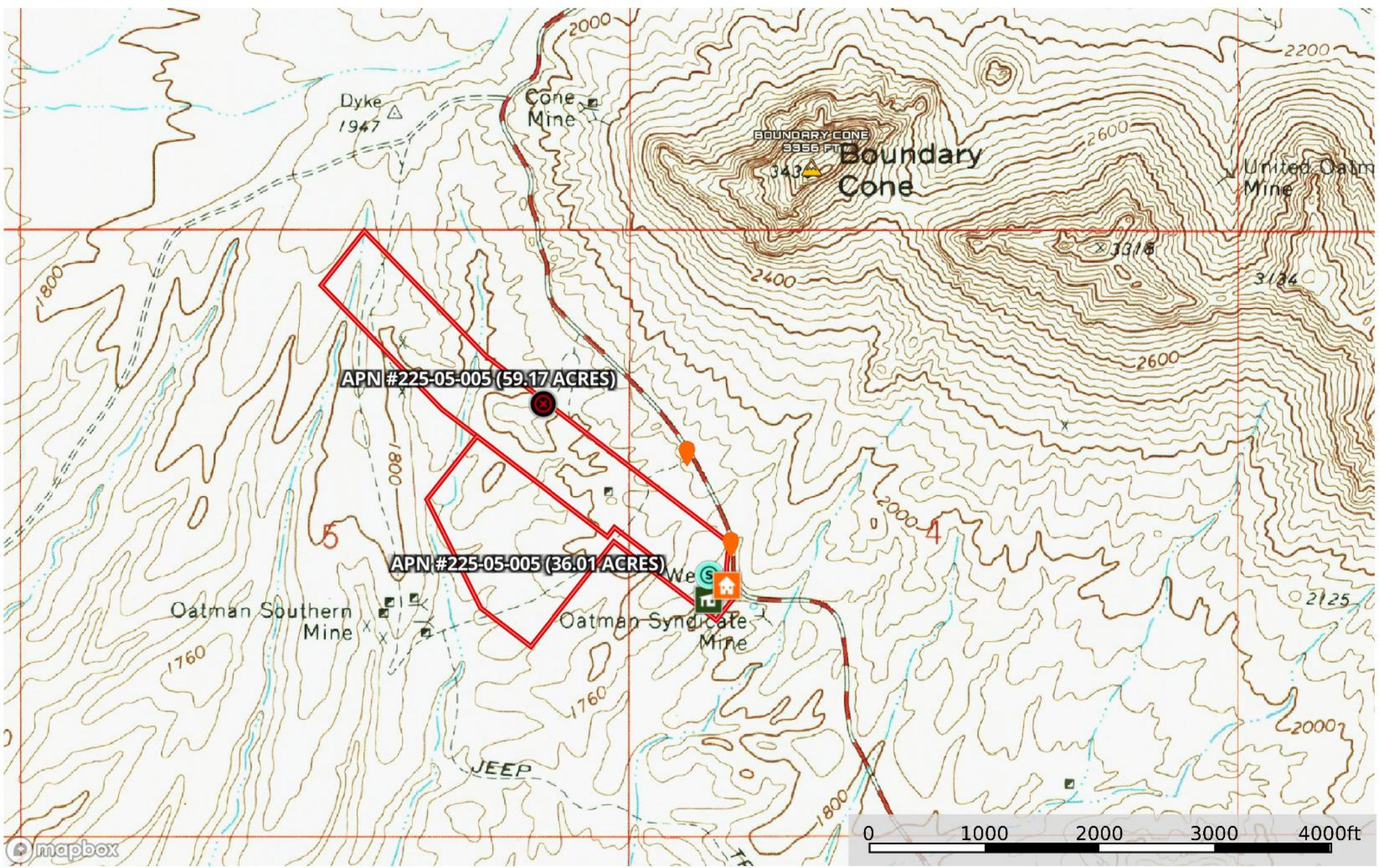
Arizona, 95.18 AC +/-



- Rock Bungal
- Open Mine
- 95.17 Acres (Oatman, AZ)
- Rock Building
- 95 Acres (Oatman AZ)
- Natural Sprir
- Boundary
- NOT AVAILABLE
- Voltage 0 - 9 KV
- Voltage 100 161 KV
- Voltage 220 287 KV
- Voltage 345 KV
- Voltage 500 KV

95.18 Acres + 5 Patented Gold Mining Claims, Oatman, AZ

Arizona, 95.18 AC +/-



Legend for map features:

- Rock Bungalow
- Open Mine
- 95.17 Acres (Oatman, AZ)
- Rock Building
- 95 Acres (Oatman AZ)
- Natural Spring
- Boundary
- NOT AVAILABLE
- Voltage 0 - 9 KV
- Voltage 100 161 KV
- Voltage 220 287 KV
- Voltage 345 KV
- Voltage 500 KV