

ONLINE REAL ESTATE AUCTION

56+/- ACRES - MCNEAL, ARIZONA

DIRECTIONS + MAPS

DIRECTIONS

From Tucson take the I-10 East (45+/- miles), take exit 303 for AZ-80 toward AZ-10/Benson/Douglas, continue onto AZ-80 E/W 4th St and go through Tombstone (29+/- miles), turn east from AZ-80 onto Davis Rd to continue east to Frontier Rd (19+/- miles). Turn right on Frontier Rd and head south to Dusty Trail (5 miles), West on Dusty Trail to Bottle Brush (1 mile), then follow the map to the cattle pen located on the south end of the 56 acre property (Cochise Assessor Parcel # 103-17-007D).

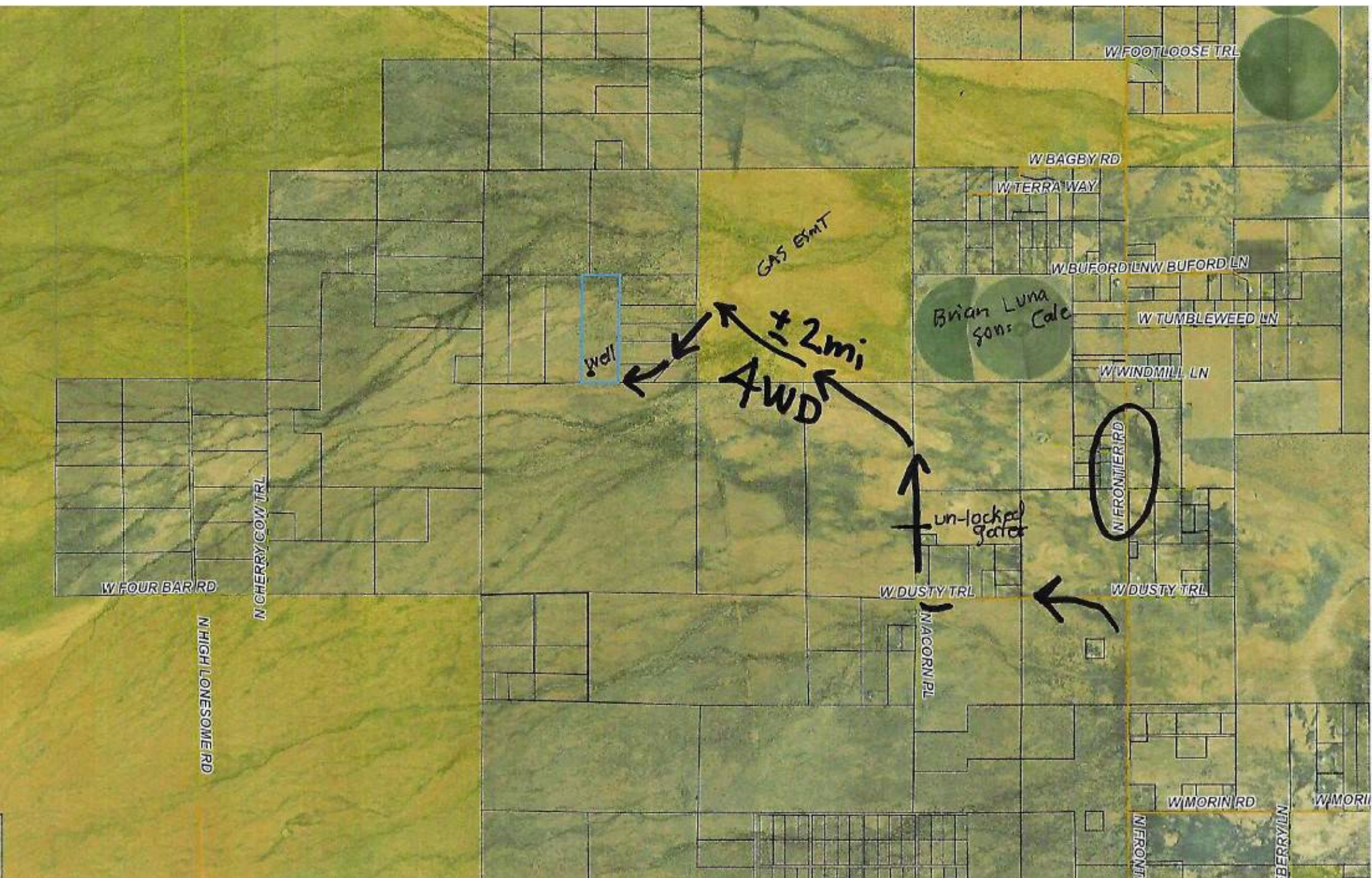
Use the links below and the GPS coordinates available to locate the property.

[CLICK HERE for a GOOGLE MAPS of GPS coordinates \(31.540288706384725, -109.79190141701581\)](#)

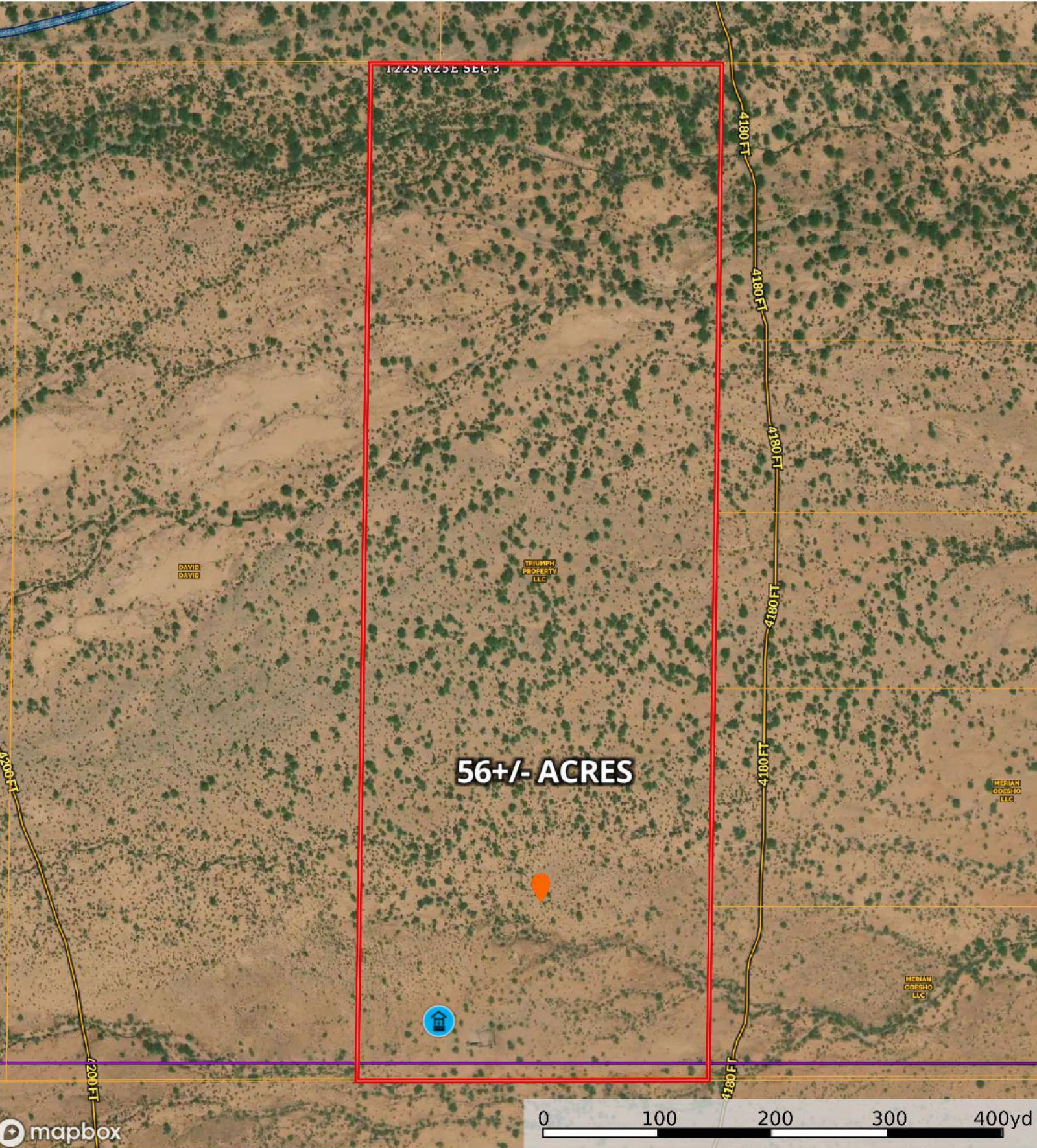
[CLICK HERE for an online interactive LAND ID map](#)

[CLICK HERE for a GOOGLE EARTH map](#)





MCNEAL, AZ (APN #103-17-007-D)
Cochise County, Arizona, 56 AC +/-



Well

56 +/- ACRES (McNeal, AZ)

APN # 103-17 007-D

Wind Farms

Wetlands

Riparian

Stream, Intermittent

River/Creek

Water Body

NOT AVAILABL

Voltage 0 - 99 KV

Voltage 100 - 161 KV

Voltage 220 - 287 KV

Voltage 345 KV

Voltage 500 KV

Substations

Aerodrome

Heliport

Seaport

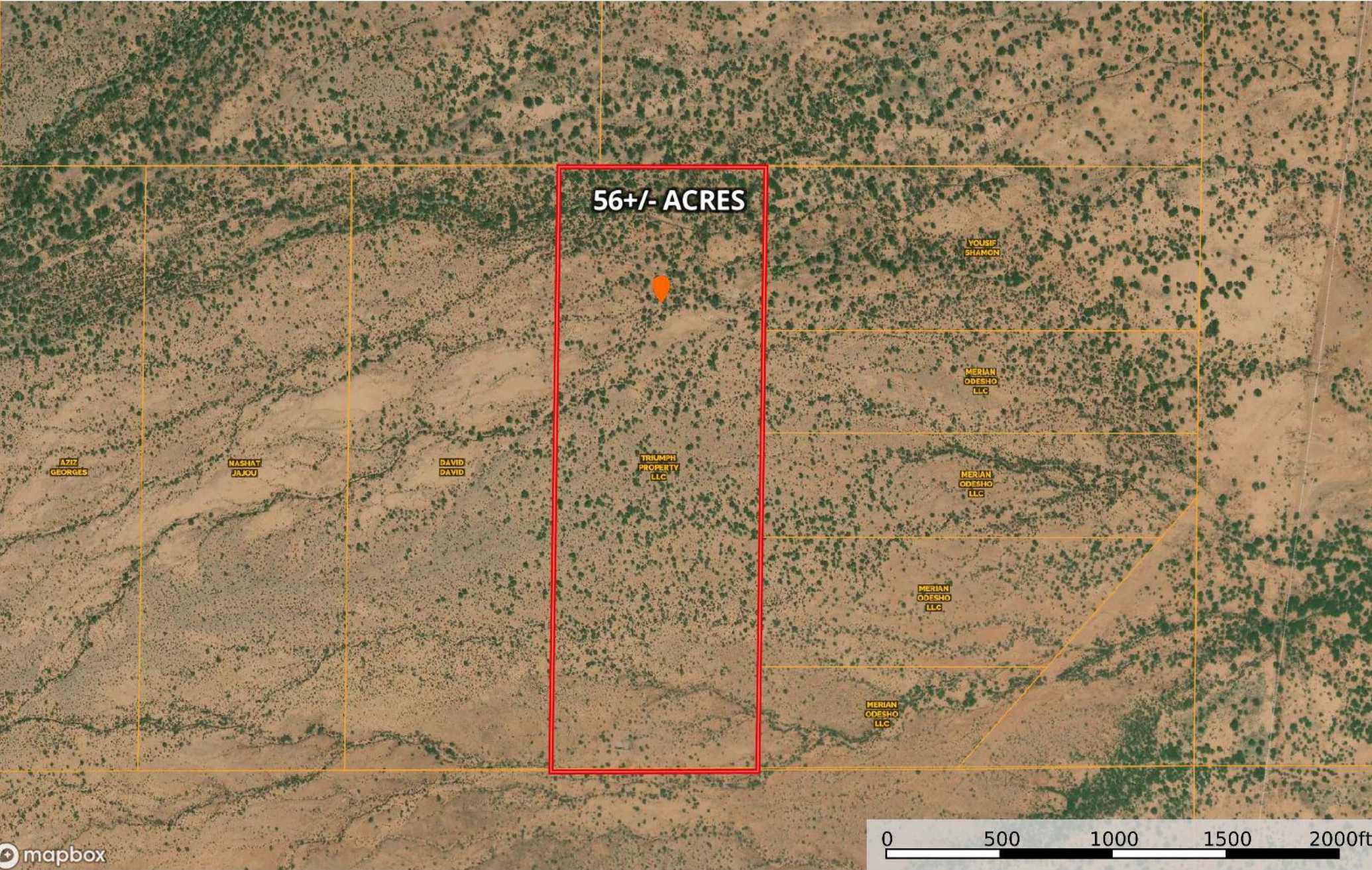
Glider Port

Ultra Light

Ballon Port

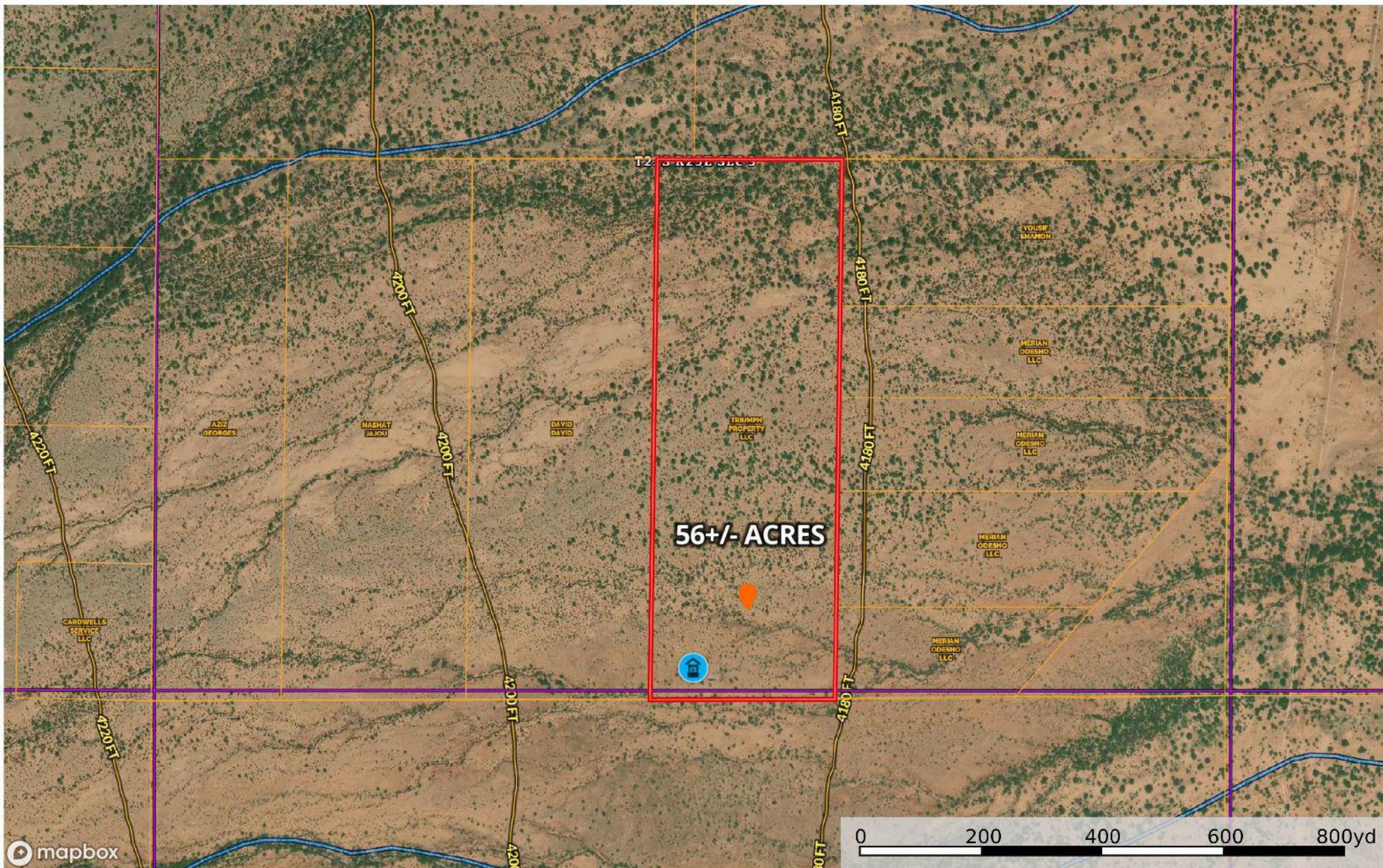
Wind Turbines (permitted)

MCNEAL, AZ (APN #103-17-007-D)
Cochise County, Arizona, 56 AC +/-



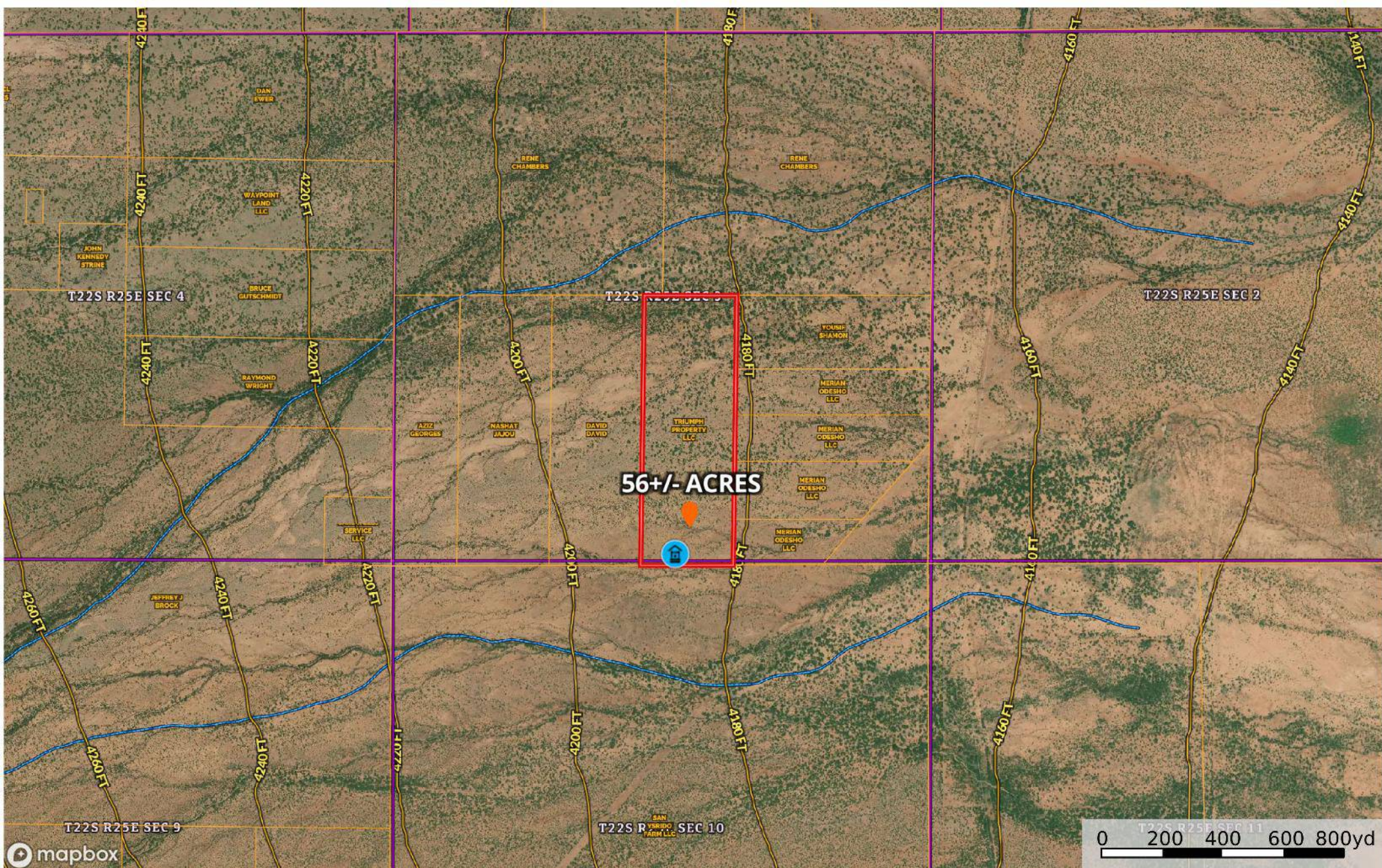
 56 +/- ACRES  APN # 103-17-007-D

MCNEAL, AZ (APN #103-17-007-D)
Cochise County, Arizona, 56 AC +/-



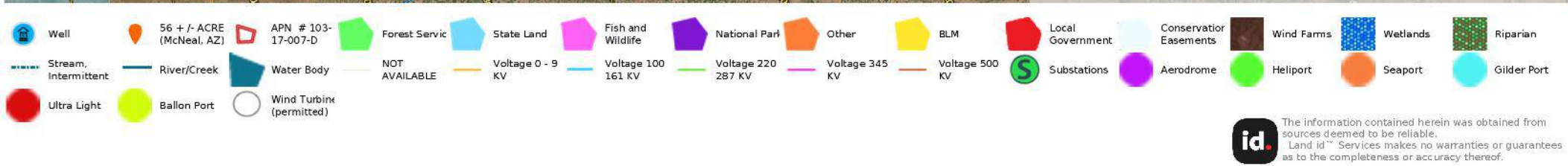
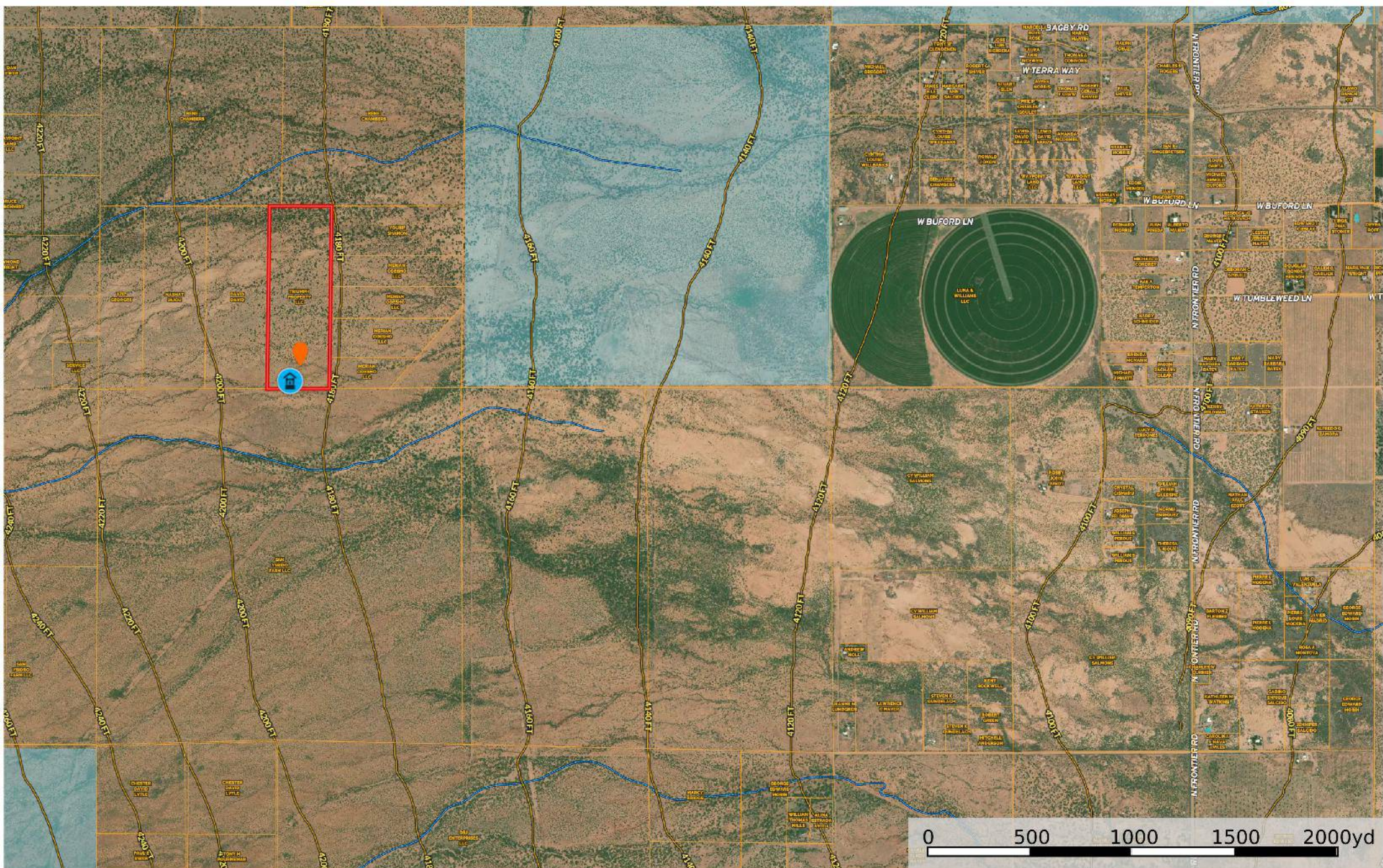
MCNEAL, AZ (APN #103-17-007-D)

Cochise County, Arizona, 56 AC +/-



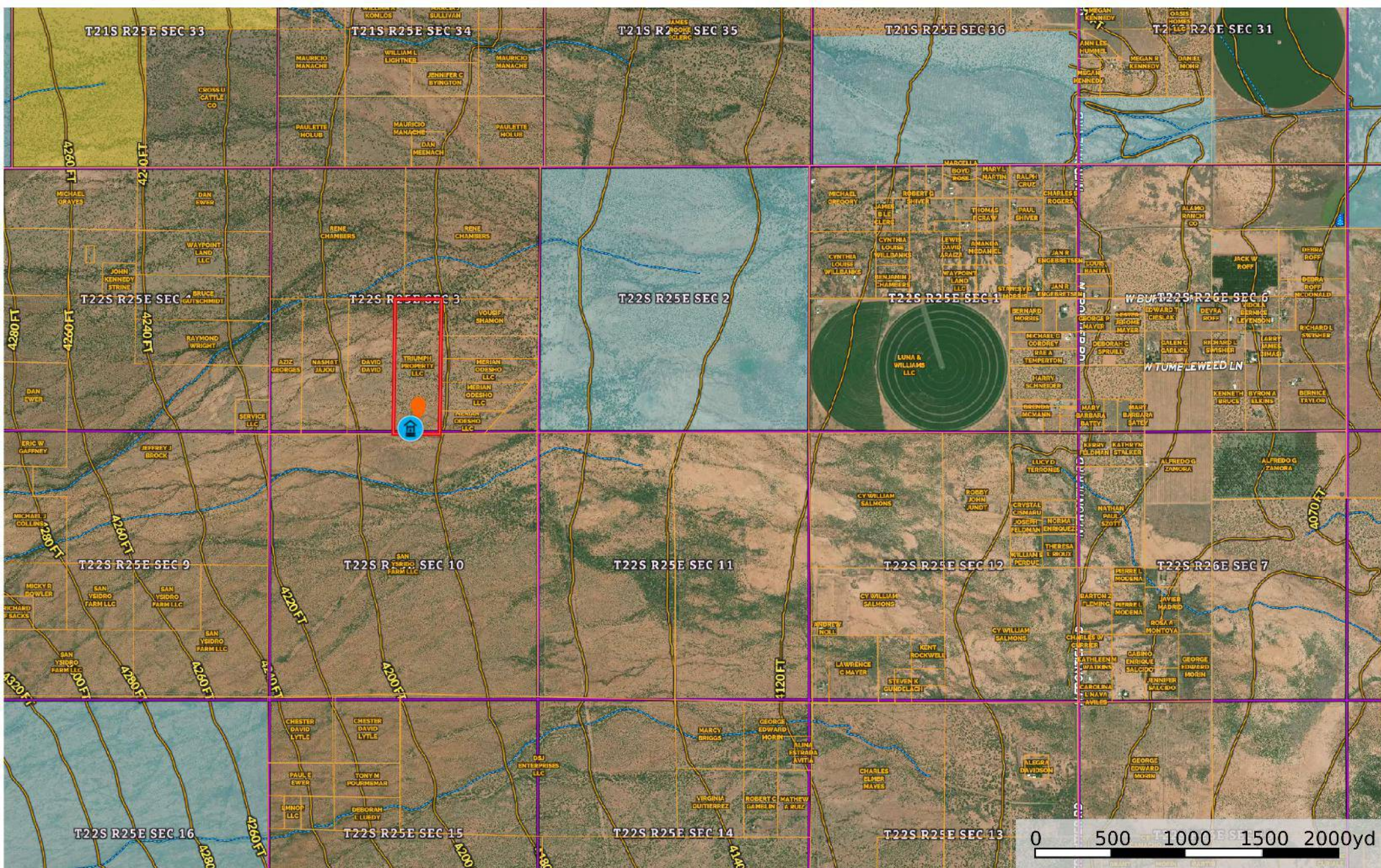
MCNEAL, AZ (APN #103-17-007-D)

Cochise County, Arizona, 56 AC +/-

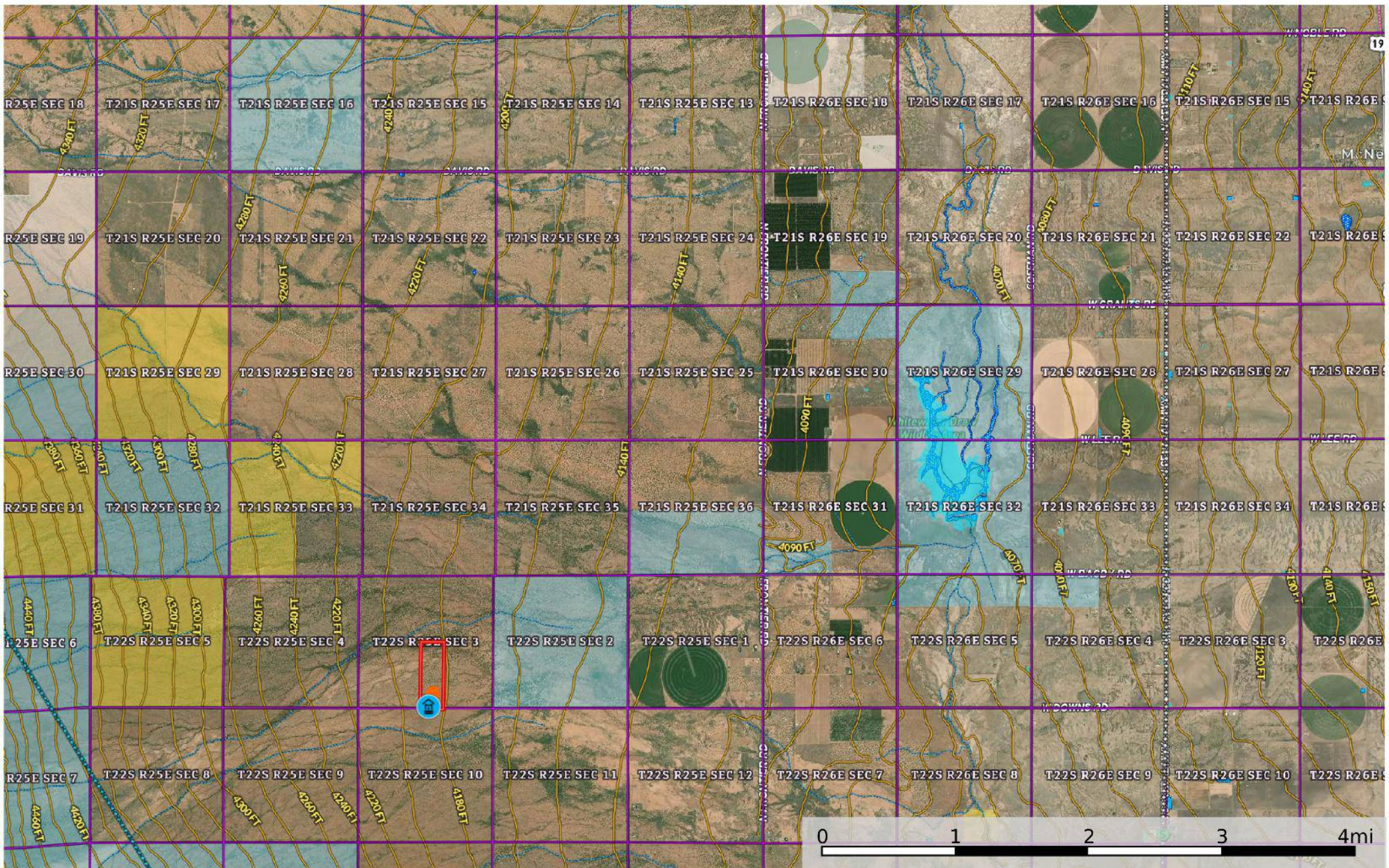


MCNEAL, AZ (APN #103-17-007-D)

Cochise County, Arizona, 56 AC +/-



MCNEAL, AZ (APN #103-17-007-D)
Cochise County, Arizona, 56 AC +/-



Well

Stream, Intermittent

Ultra Light

56 +/- ACRE (McNeal, AZ)

River/Creek

Ballon Port

APN # 103-17-007-D

Water Body

Wind Turbine (permitted)

Forest Service

NOT AVAILABLE

Wind Farms

State Land

Voltage 0 - 9 KV

Wetlands

Fish and Wildlife

Voltage 100 161 KV

Riparian

National Park

Voltage 220 287 KV

Gilder Port

Other

Voltage 345 KV

Heliport

BLM

Voltage 500 KV

Seaport

Local Government

Substations

Conservator Easements

Aerodrome

Wind Farms

Wetlands

Heliport

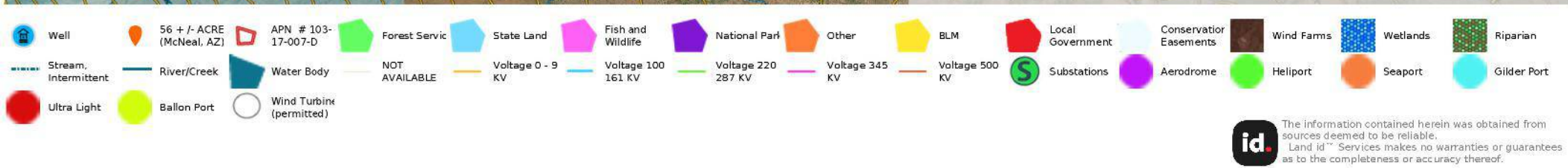
Seaport

Gilder Port

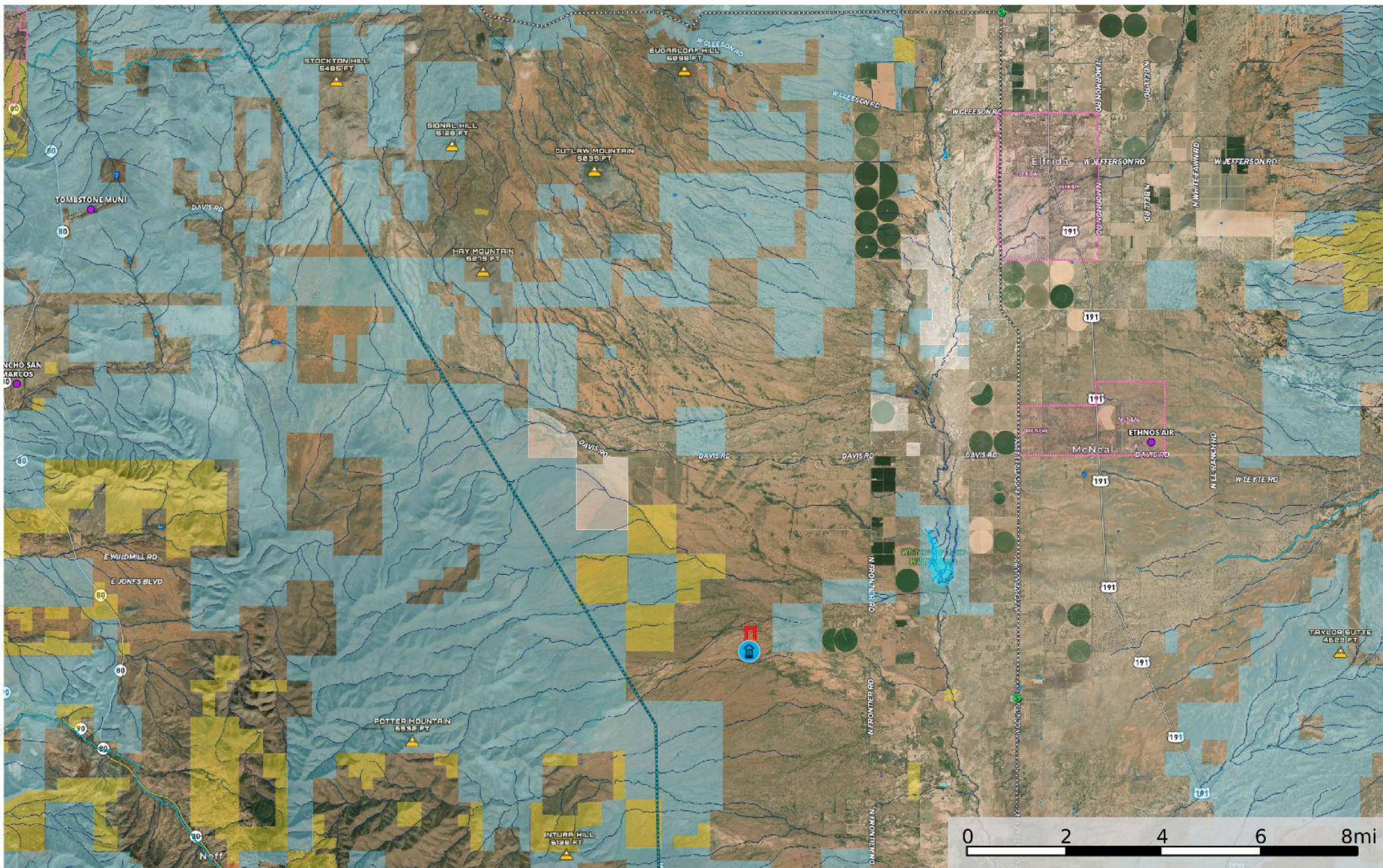
id.

The information contained herein was obtained from sources deemed to be reliable. Land id™ Services makes no warranties or guarantees as to the completeness or accuracy thereof.

Cochise County, Arizona, 56 AC +/-



MCNEAL, AZ (APN #103-17-007-D)
Cochise County, Arizona, 56 AC +/-



Well

56 +/- ACRE (McNeal, AZ)

APN # 103-17-007-D

Stream, Intermittent

Ultra Light

Forest Servis

NOT AVAILABLE

Wind Turbine (permitted)

State Land

Voltage 0 - 9 KV

Water Body

Fish and Wildlife

Voltage 100 161 KV

Wind Farms

National Park

Voltage 220 287 KV

Wetlands

Other

Voltage 345 KV

Riparian

BLM

Voltage 500 KV

Gilder Port

Local Government

Substations

Conservator Easements

Aerodrome

Heliport

Seaport

The information contained herein was obtained from sources deemed to be reliable. Land id™ Services makes no warranties or guarantees as to the completeness or accuracy thereof.