



Slade Priest

sladepriest1@gmail.com

Office: (601) 250-0017

Cell: (601) 888-0094

SouthernStatesRealty.com



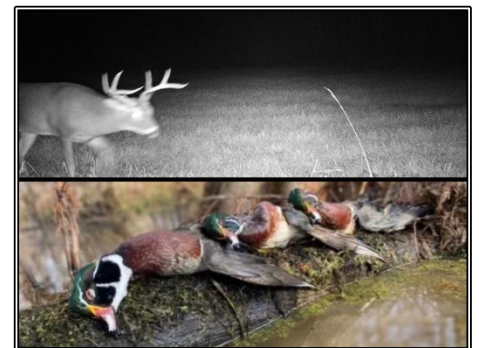
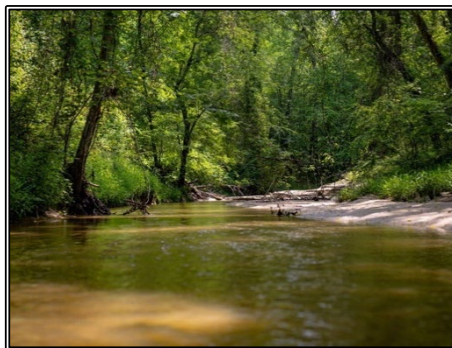
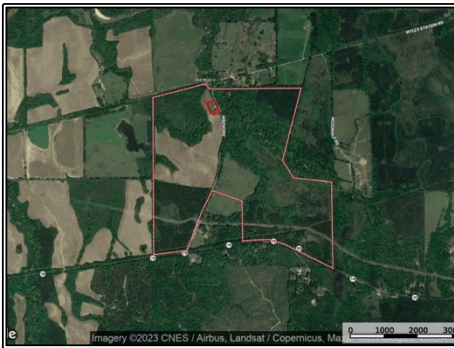
**SOUTHERN
STATES REALTY**



Hunting land for sale in Claiborne County, Mississippi. This +/-455 acres is located on the eastern side of Claiborne County just off of Highway 18. This tract checks all of the boxes. In fact, it checks the boxes of several tracts. With a private gated entrance, turnkey camp & shop, 3 duck holes, planted crop fields, pine plantations, beautiful hardwoods, and several creeks and sloughs are just a few of the features of this beautiful property. With over 12 strategically placed food plots, this tract actually hunts much larger than its size. The plots feature box stands and feeders with clover already established in most plots. The tract has had very limited hunting pressure for both deer and turkey the last few years creating great age structure. This area of Claiborne County is known for its rich soils and great genetics and this tract is no different. The camp on the property is a small mobile home with front and back porches. The property also features a newly constructed metal building adjoining the perfect campsite with lockable storage and a large, enclosed skinning room all sitting above a large cypress slough. This tract truly is a year-round turkey paradise. Fishing, playing in the creek, deer and duck hunting in the fall, and hard gobbling turkeys in the spring are just a few of the reasons you'll love this tract. Tracts with this many features at this price rarely come on the market. Call today to set up your private showing.

1017 Insemore Road, Hermanville, MS

32.00664, -90.73098 GPS



\$1,592,500

**455± Acres
MLS #138323
UC #23042-38323**



#HUNTINGLANDMAN