



## StandID

Mostly Hardwood, Upland (+/- 19.7 ac)

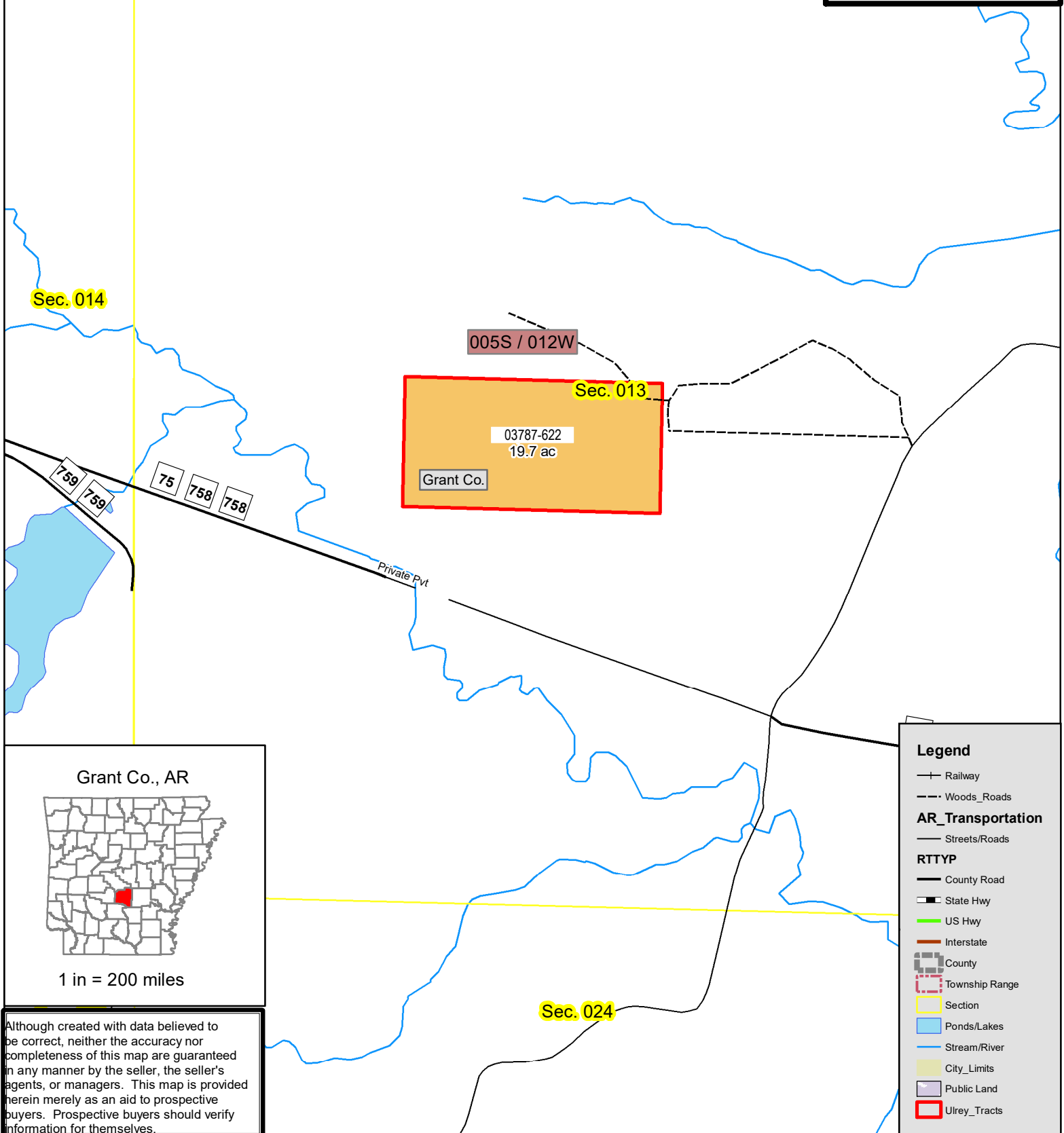
TType Map  
#03787 East Prague 20  
+/- acres (Taxes)  
Sec. 13-05S/12W  
Grant Co., AR

— = property boundary

0 330 660 Feet

1 in = 660 feet

Created By: DN  
Neeley Forestry Service, Inc.  
915 Pickett St., Camden, AR 71701  
Date: 3/3/2022



005S / 012W

Sec. 013

03787-622  
19.7 ac

Grant Co.

Private Pvt

Sec. 014

Sec. 024

## Legend

—+— Railway  
--- Woods\_Roads

## AR\_Transportation

— Streets/Roads

## RTTYP

— County Road

— State Hwy

— US Hwy

— Interstate

County

Township Range

Section

Ponds/Lakes

Stream/River

City\_Limits

Public Land

Ulrey\_Tracts

Grant Co., AR



1 in = 200 miles

Although created with data believed to be correct, neither the accuracy nor completeness of this map are guaranteed in any manner by the seller, the seller's agents, or managers. This map is provided herein merely as an aid to prospective buyers. Prospective buyers should verify information for themselves.