



Aerial Map  
**#03784 Hall Pratt Road**  
+/- 27.026 acres (Taxes)  
Sec. 35-19S/15W  
Union Co., AR

— = property boundary

0 330 660 Feet  
1 in = 660 feet

Created By: DN  
Neeley Forestry Service, Inc.  
915 Pickett St., Camden, AR 71701  
Date: 5/4/2023

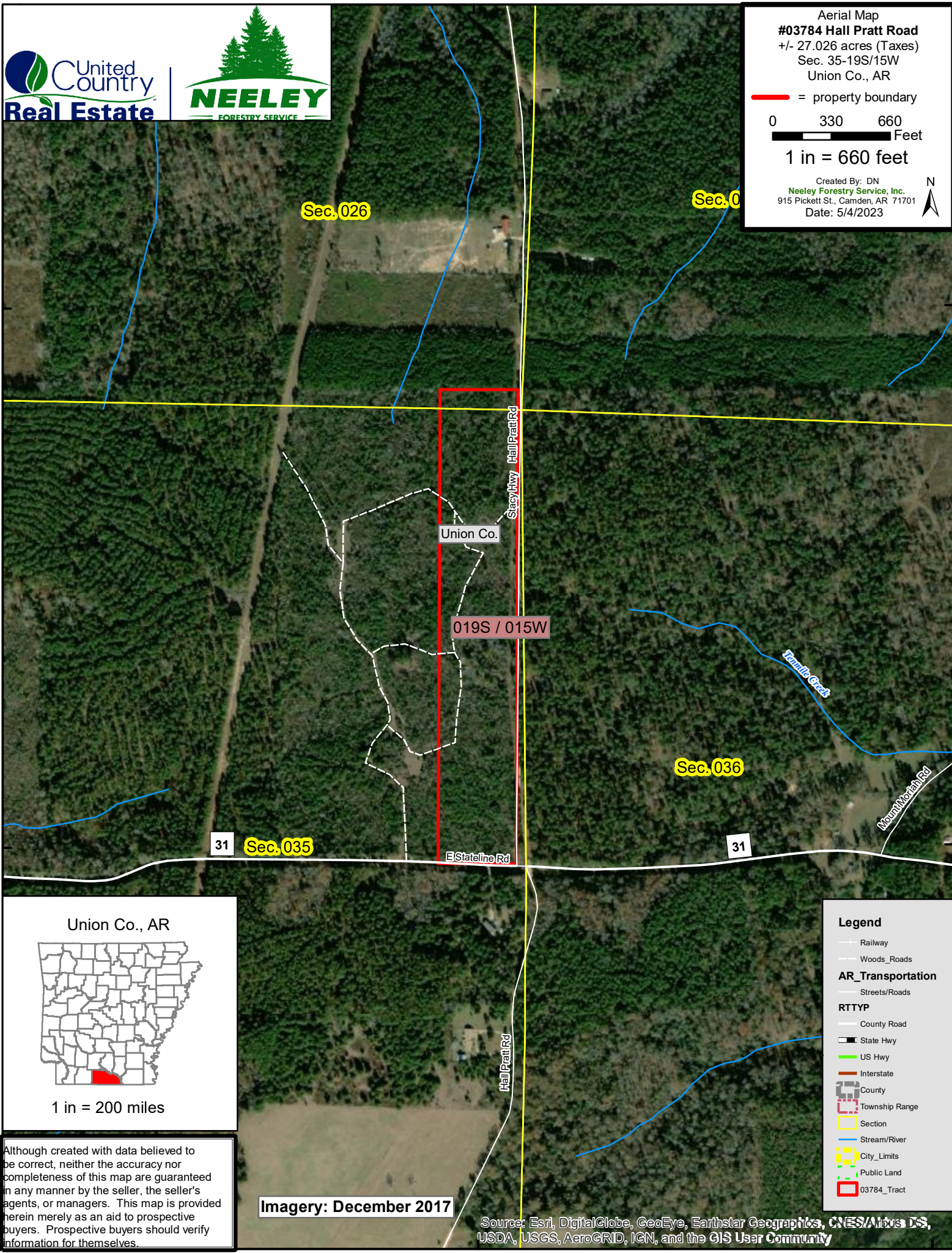
N

33°20'0"N

33°20'0"N

33°1'30"N

33°1'30"N



Union Co., AR

1 in = 200 miles

Although created with data believed to be correct, neither the accuracy nor completeness of this map are guaranteed in any manner by the seller, the seller's agents, or managers. This map is provided herein merely as an aid to prospective buyers. Prospective buyers should verify information for themselves.

Imagery: December 2017

**Legend**

- Railway
- Woods\_Roads
- AR\_Transportation
  - Streets/Roads
- RTTYP
  - County Road
  - State Hwy
  - US Hwy
  - Interstate
- County
- Township Range
- Section
- Stream/River
- City\_Limits
- Public Land
- 03784\_Tract

Source: Esri, DigitalGlobe, GeoEye, Earthstar Geographics, CNES/Airbus DS, USDA, USGS, AeroGRID, IGN, and the GIS User Community