

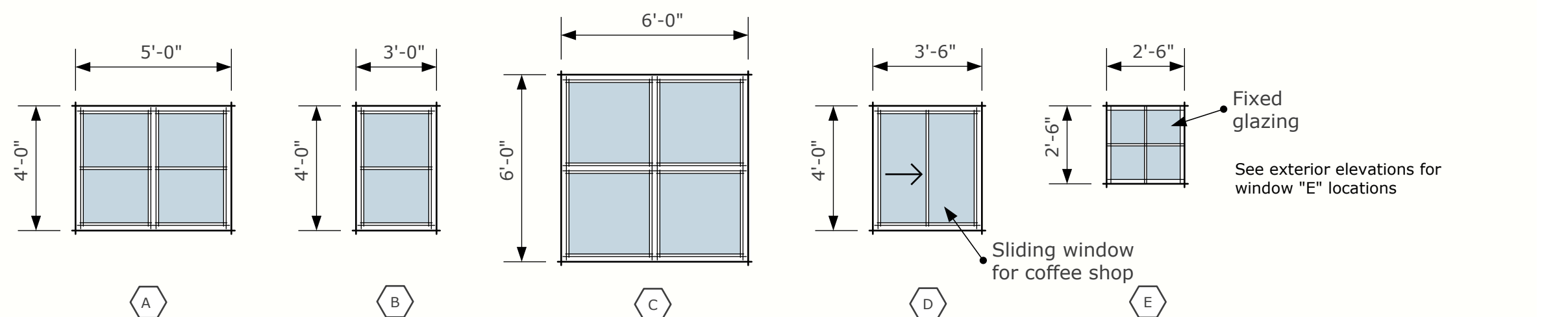
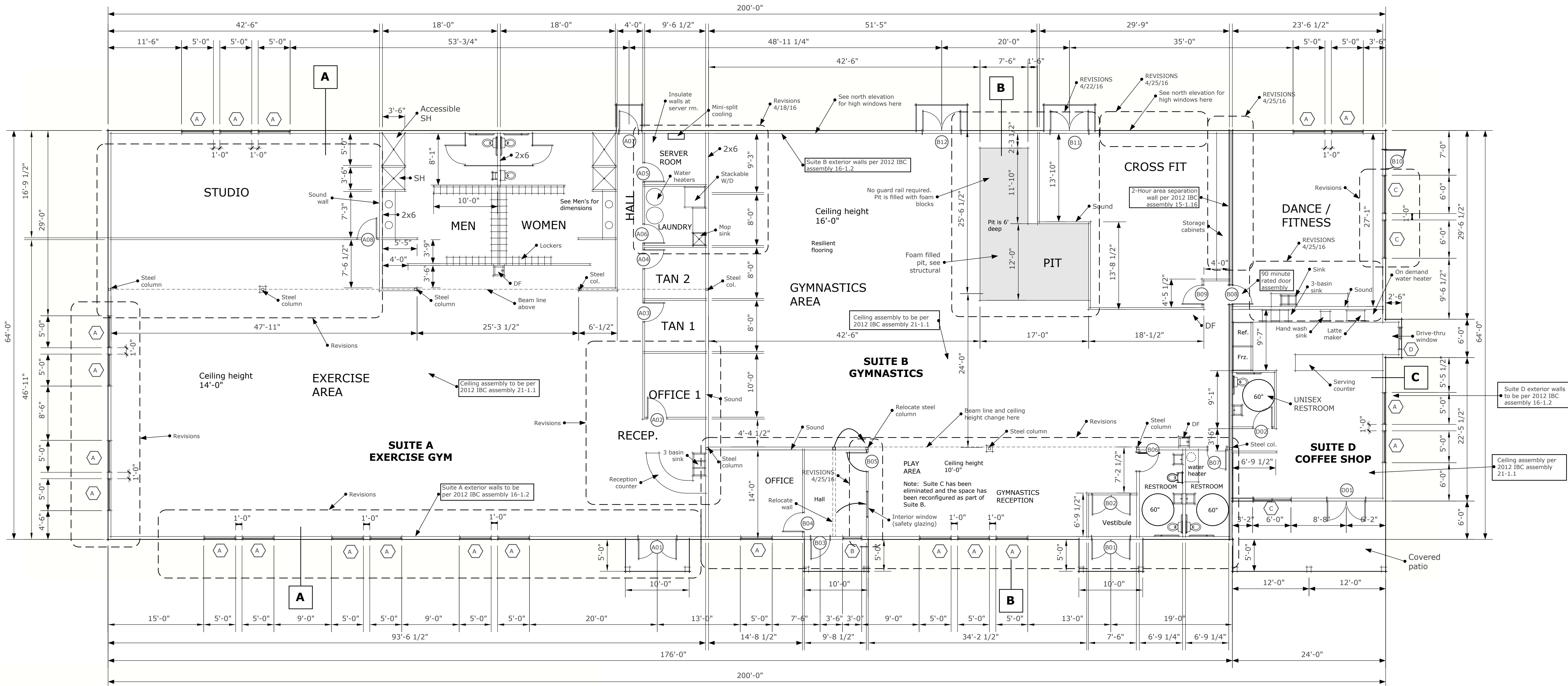
FLOOR PLAN

Design by:
Paul Bishop
Polson, Montana
406-885-4443
bidsol@centurylink.net

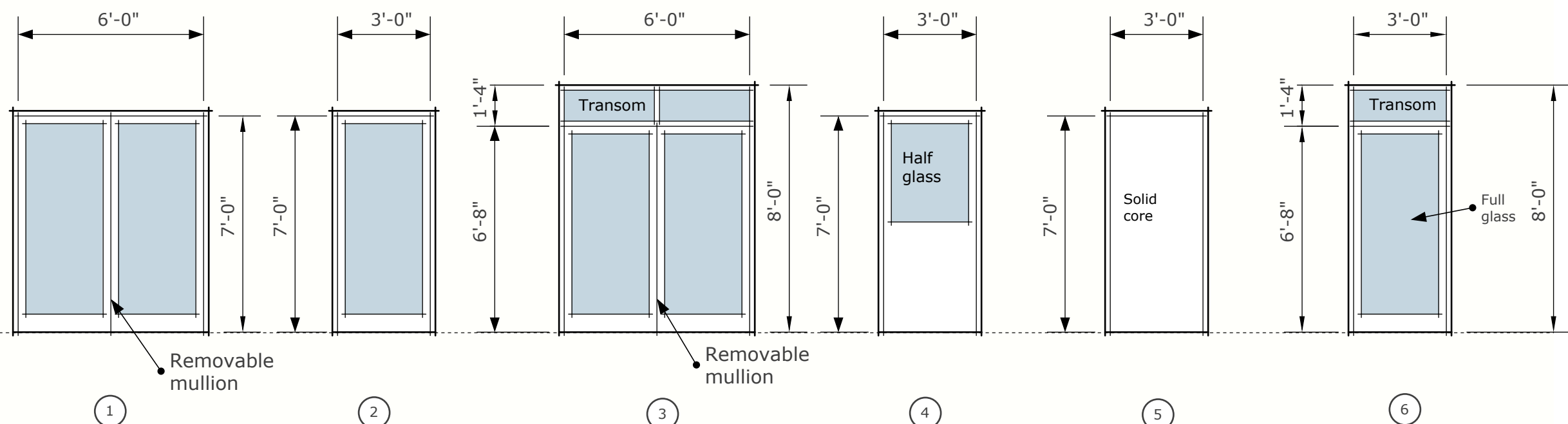
101 Whitewater Building

Nate Modderman, Owner
Lot 14c Whitewater Place
Ridgewater Development
Polson, Montana

SHEET NO.
A2



WINDOW ELEVATIONS
Scale: 1/4" - 1'-0"



DOOR STYLE ELEVATIONS
Scale: 1/4" - 1'-0"



MAIN FLOOR PLAN

Scale: 1/8" - 1'-0"
(at 24 x 36 format)

Gross area = 12,656 sq.ft.

DOOR SCHEDULE

No.	Location	Type	Width	Height	Rating	Hinges	Closer	Panic	Passage	Lockset	Privacy	Washership	Mullion (*)	Doorstop	Comments
A01	Workout gym entrance	Double	3-0	7-0	No	X	X	X				X	X		
A02	Office 1	Single	3-0	7-0	No	X				X				X	
A03	Tan 1	Single	3-0	7-0	No	X				X					
A04	Tan 2	Single	3-0	7-0	No	X				X				X	
A05	Server Room	Single	3-0	7-0	No	X				X		X		X	
A06	Laundry	Single	3-0	7-0	No	X				X				X	
A07	Rear Entrance	Single	3-0	7-0	No	X				X				X	
A08	Studio	Double	3-0	7-0	No	X			X					X	
B01	Gymnastics entrance	Double	3-0	7-0	No	X	X	X				X	X		
B02	Gymnastics air lock	Double	3-0	7-0	No	X	X	X						X	
B03	Gymnastics second entry	Single	3-0	7-0	No	X	X			X		X			
B04	Office	Single	3-0	7-0	No	X				X				X	
B05	Hallway	Single	3-0	7-0	No	X				X		X		X	
B06	Restroom	Single	3-0	7-0	No	X						X		X	
B07	Restroom	Single	3-0	7-0	No	X						X		X	
B08	Art studio	Single	3-0	7-0	90 min	X	X			X				X	90 minute fire rated assembly
B09	Crossfit	Single	3-0	7-0	No	X				X				X	
B10	Art Studio Entry	Single	3-0	7-0	No	X	X			X		X			
B11	Crossfit back door	Double	3-0	7-0	No	X				X		X	X		
B12	Gymnastics back door	Double	3-0	7-0	No	X				X		X	X		

Note: Suite C has been deleted, reconfigured space has been added to Suite B

FIRE ASSEMBLY NOTES:

15-1.16 2-Hour Area Separation Wall Assembly (Between Suite B and Coffee Shop / Art Studio)

2" x 6" wood studs at 24" centers with double top plates, single bottom plate; interior and exterior side covered with two layers of 5/8" Type X gypsum wallboard, 4" wide, applied horizontally with vertical joints over studs. Base layer fastened with 2 1/4" Type S drywall screws, spaced 24" on center and face layer fastened with Type S drywall screws, spaced 8" on center, wallboard joints covered with paper tape and joint compound, fastener heads covered with joint compound. Cavity to be filled with 5 1/2" mineral wool insulation.

16-1.2 Exterior Wall Assembly (all exterior walls; Suites A, B and D)

2" x 6" wood studs at 16" centers with double top plates, single bottom plate; interior side covered with 5/8" Type X gypsum wallboard, 4" wide, applied horizontally or vertically with vertical joints over studs and fastened with 2 1/4" Type S drywall screws, spaced 12" on center, wallboard joints covered with paper tape and joint compound, fastener heads covered with joint compound, exterior side covered with 7/16" wood structural panels fastened with 6d common nails (bright) spaced 12" on center in the field and 6" on center along the panel edges. Cavity to be filled with 5 1/2" mineral wool insulation. Rating established from the gypsum-covered side only.

21-1.1 Ceiling Assembly (all ceilings; Suites A, B and D)

Ceiling Base layer 5/8" Type X gypsum wallboard applied at right angles to joist or truss 24" o.c. with 1 1/4" Type S or Type W drywall screws 24" o.c. Face layer 5/8" Type X gypsum wallboard or veneer base applied at right angles to joist or truss through base layer with 1 7/8" Type S or Type W drywall screws 12" o.c. at joints and intermediate joist or truss. Face layer Type G drywall screws placed 2" back on either side of face layer end joints, 12" o.c.

