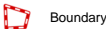
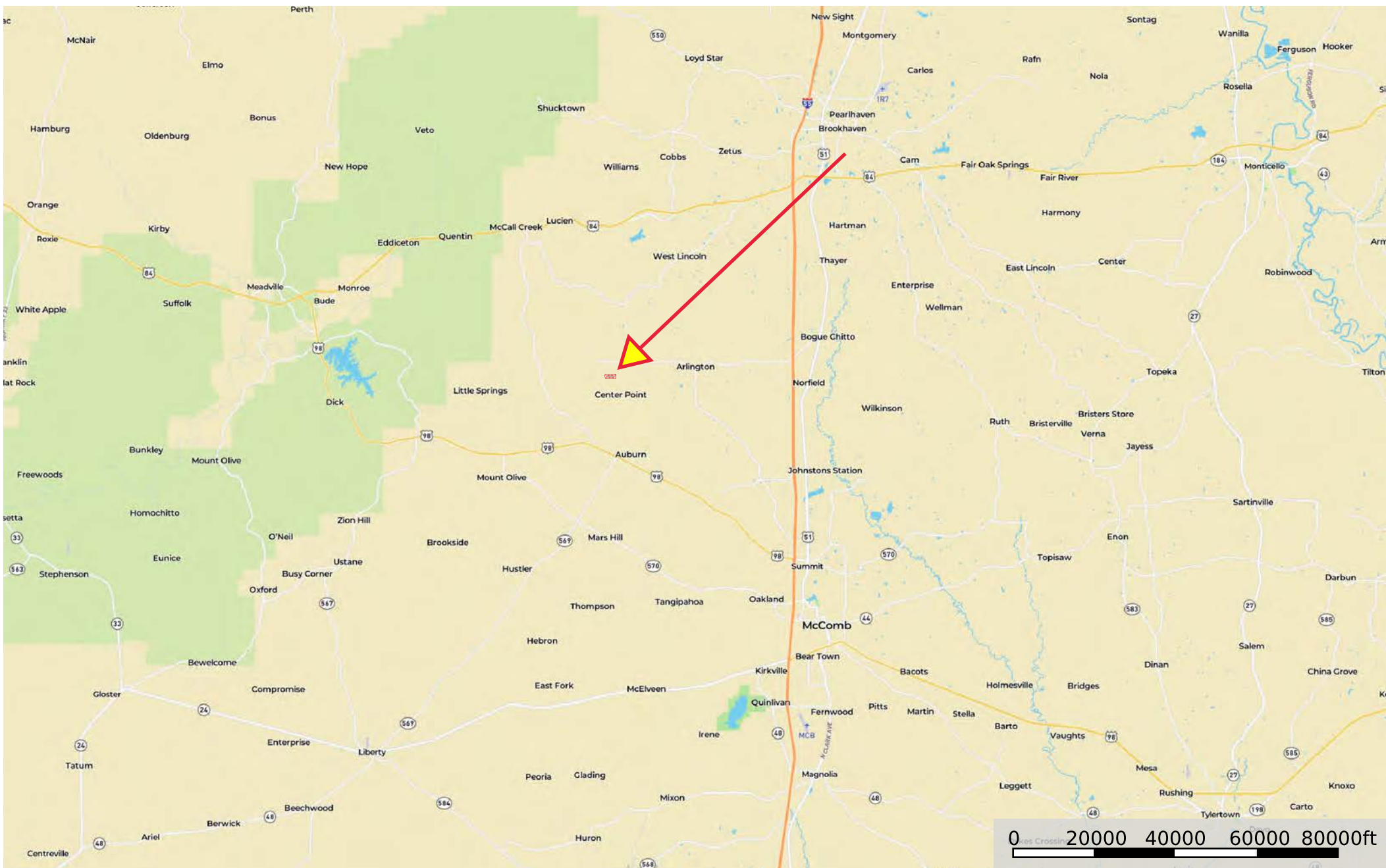



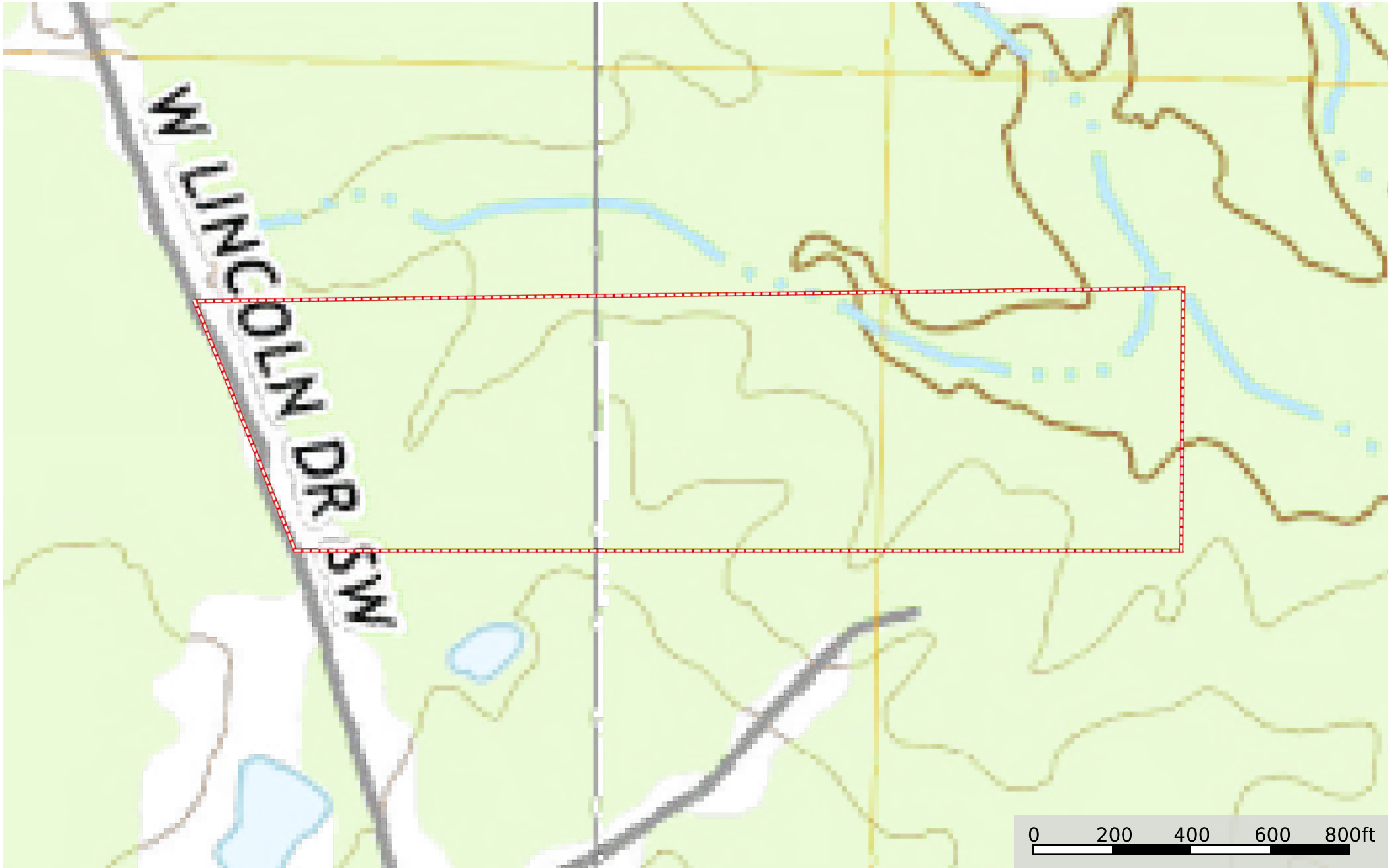
JD-Ken Bottom property 35.05 acres

Mississippi, AC +/-





 Boundary



Boundary



 Boundary

|  Boundary 35.04 ac

SOIL CODE	SOIL DESCRIPTION	ACRES	%	CPI	NCCPI	CAP
BuB	Bude silt loam, 2 to 5 percent slopes	13.97	39.86	0	56	3e
PrC2	Providence silt loam, 5 to 8 percent slopes, eroded	8.02	22.88	0	28	3e
Fm	Falaya silt loam, local alluvium (oaklimeter)	7.55	21.54	0	74	2w
BuA	Bude silt loam, 0 to 2 percent slopes	4.5	12.84	0	31	2w
Fa	Falaya silt loam (oaklimeter)	0.89	2.54	0	74	2w
BuB2	Bude silt loam, 2 to 5 percent slopes, eroded	0.11	0.31	0	48	3e
TOTALS		35.04(*)	100%	-	50.68	2.63






(*) Total acres may differ in the second decimal compared to the sum of each acreage soil. This is due to a round error because we only show the acres of each soil with two decimal.

Capability Legend

Increased Limitations and Hazards

Decreased Adaptability and Freedom of Choice Users

Land, Capability

								
	1	2	3	4	5	6	7	8
'Wild Life'	•	•	•	•	•	•	•	•
Forestry	•	•	•	•	•	•	•	
Limited	•	•	•	•	•	•	•	
Moderate	•	•	•	•	•	•		
Intense	•	•	•	•	•			
Limited	•	•	•	•				
Moderate	•	•	•					
Intense	•	•						
Very Intense	•							

Grazing Cultivation

(c) climatic limitations (e) susceptibility to erosion

(s) soil limitations within the rooting zone (w) excess of water