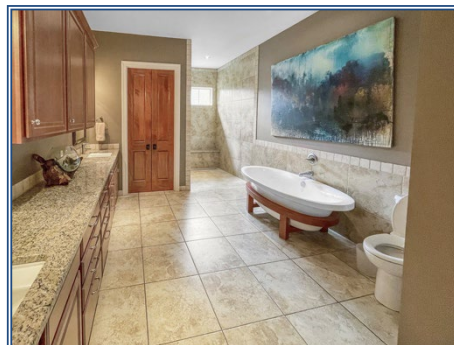
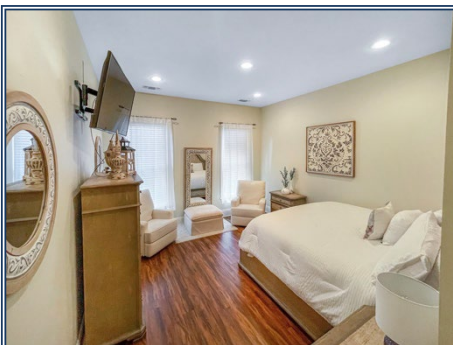




3,014 sqft 2-3 Bed, 2.5 Bath home for sale in Summit, MS situated on a beautiful fully landscaped lot inside a gated subdivision on a small cul de sac street. Enjoy the mornings in the fully fenced private courtyard with private grilling area and small back lawn or from the huge sunroom with floor to ceiling windows overlooking the courtyard. This high-quality, well-maintained home with porcelain ceramic floors features a heated/cooled double garage with storage, gorgeous landscaping, and paved driveway. The interior features a huge living/dining area, chef's kitchen with granite counters, double oven, double dishwashers, gas cooktop, and cherry cabinets, huge pantry area, reading room and a private office. High End Kitchen, master suite features a huge walk-in shower, his/her sinks and very spacious walk-in closet. The house is listed as a 2 Bedroom but the reading room or private office could be used as a 3rd or 4th bedroom if needed. Perfect low maintenance home and small-town community for the retired couple or family. Call us today for a private viewing of this home for sale in SW MS.

107 Grove Place, Summit, MS

31.280592, -90.470117 GPS



\$336,000

0.29 Acres
MLS #138192
UC #23042-38912



Scott Campbell
scampbellunited@bellsouth.net
Office: (601) 250-0017
Cell: (601) 248-4595
SouthernStatesRealty.com