



Hunter Smith

hunter@hunterenergycorp.com

Office: (601) 250-0017

Cell: (318) 245-6965

SouthernStatesRealty.com



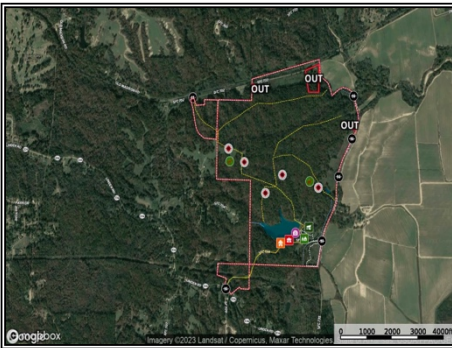
**SOUTHERN
STATES REALTY**



Martha's Ridge is a multi-purpose recreational tract for sale in St. Francis County, AR, situated in the heart of the Mississippi Delta region. This meticulously maintained property spans over 616+ acres and features diverse terrain, including 400+ acres of mature hardwood timber, fenced horse and hay pastures, an interior road system, and a professionally managed 20-acre trophy bass lake. Martha's Ridge also offers hunting opportunities for whitetail deer, eastern turkey, and other small game, as well as horse riding trails and a traditional 4-stall horse barn. Two hill-top estate homes with covered parking and additional storage facilities are included in the property, which also has significant income opportunities from its estimated \$600,000 worth of timber and large gravel vein. The possibilities for Martha's Ridge include a multi-family estate or hobby farm, equestrian estate, hunting operation headquarters, residential development, church, or summer camp. Private showings are available with the listing agent, selling party, or selling party representative present.

2281 Hwy 334, Forrest City, AR

34.983450, -90.749152 GPS



\$3,250,000

**616 Acres
UC #23042-72335**

