

UC
RANCH
PROPERTIES
A Division of United Country Real Estate



United Country
Real Estate

Jett Blackburn
Real Estate Inc.



Big Hill Farm

\$695,000

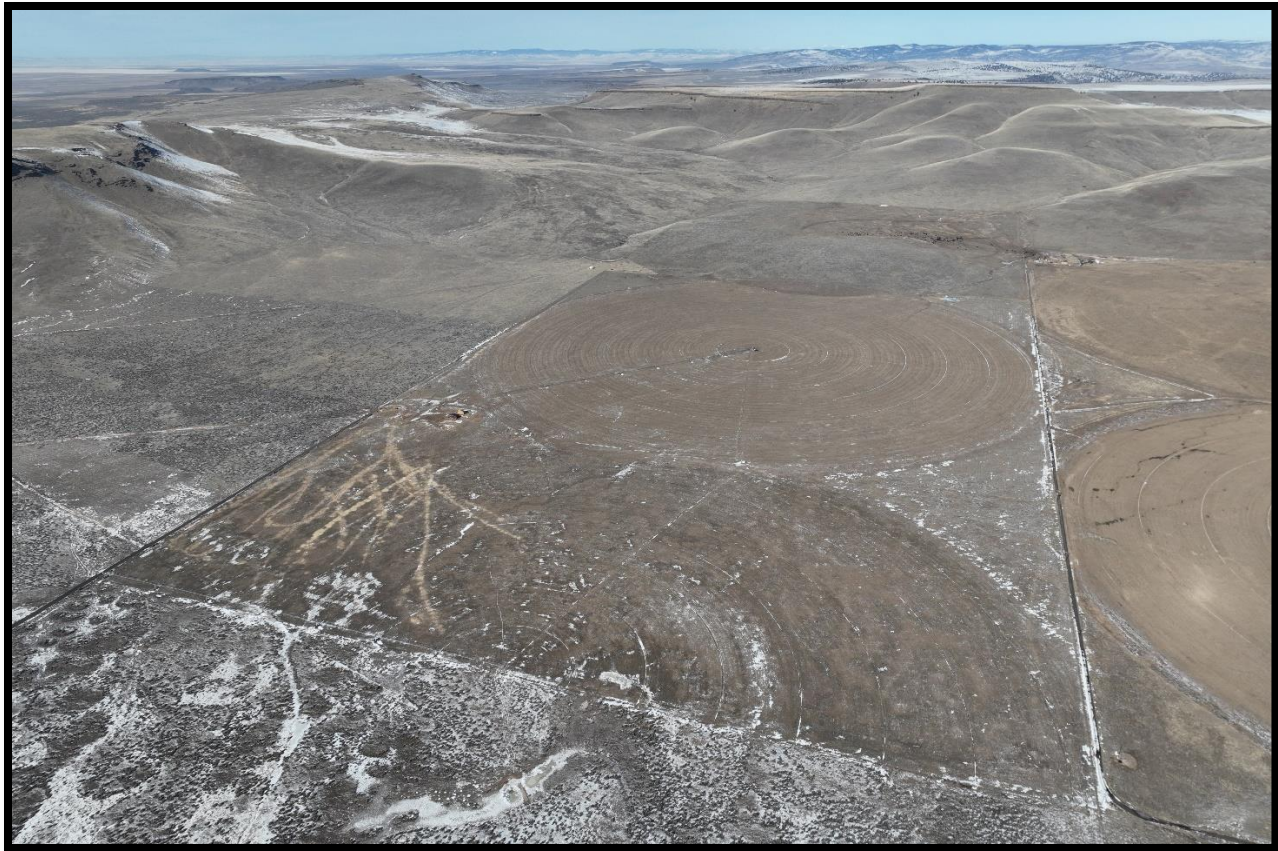


Curt Contact Card

Presented by
Curt Blackburn & Jake Blackburn
United Country Jett Blackburn Real Estate Inc.
707 Ponderosa Village
Burns, OR 97720
541/573-7206 (office) 541/573-5011 (fax)
web site: <http://www.jettblackburn.com>



Jake Contact Card



LOCATION: Approx. 40 miles southeast of Burns, Oregon off Hwy 78

ACREAGE: 240 deeded acres

CROPS: 160 acres of alfalfa hay

IRRIG. EQUIP: 1 – Turbine pumps
2 – approx. ¼ mile Reinke Pivots

WELLS: 1 – irrigation wells
1 – stock well

WATER RIGHTS:

Permit #
G18458

Priority Date
June 29, 2009

Acres
160



TAXES: \$1,053.86 (2022/2023)

PRICE: \$695,000

COMMENTS: This Eastern Oregon farmland is located $\frac{3}{4}$ mile north of Hwy 78 & about 15 minutes away from the Crane Store. The 160 acres of farm ground is planted in alfalfa hay that is irrigated with 2 $\sim\frac{1}{4}$ mi Reinke Pivots supplied by 1 turbine pump with variable frequent driver panel. The property is perimeter fencing & an enclosed stackyard with a game fence. There is an additional stock well that is shared with the neighboring property to the West. This property has great water supply.

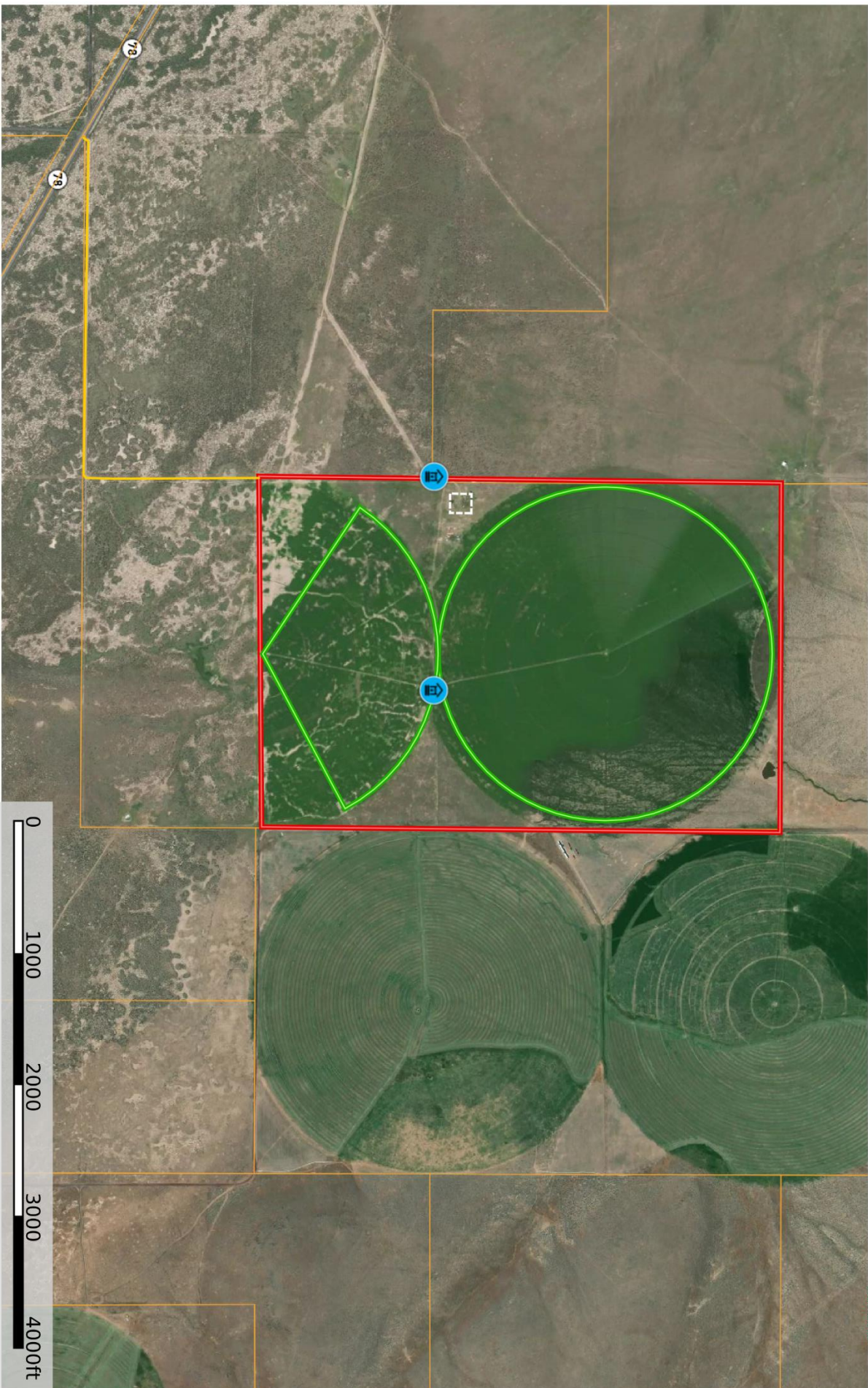
****Previous Seller has Right of First Refusal****





Oregon, 240 AC +/-

Real Estate
Jett Blackburn
Real Estate, Inc.



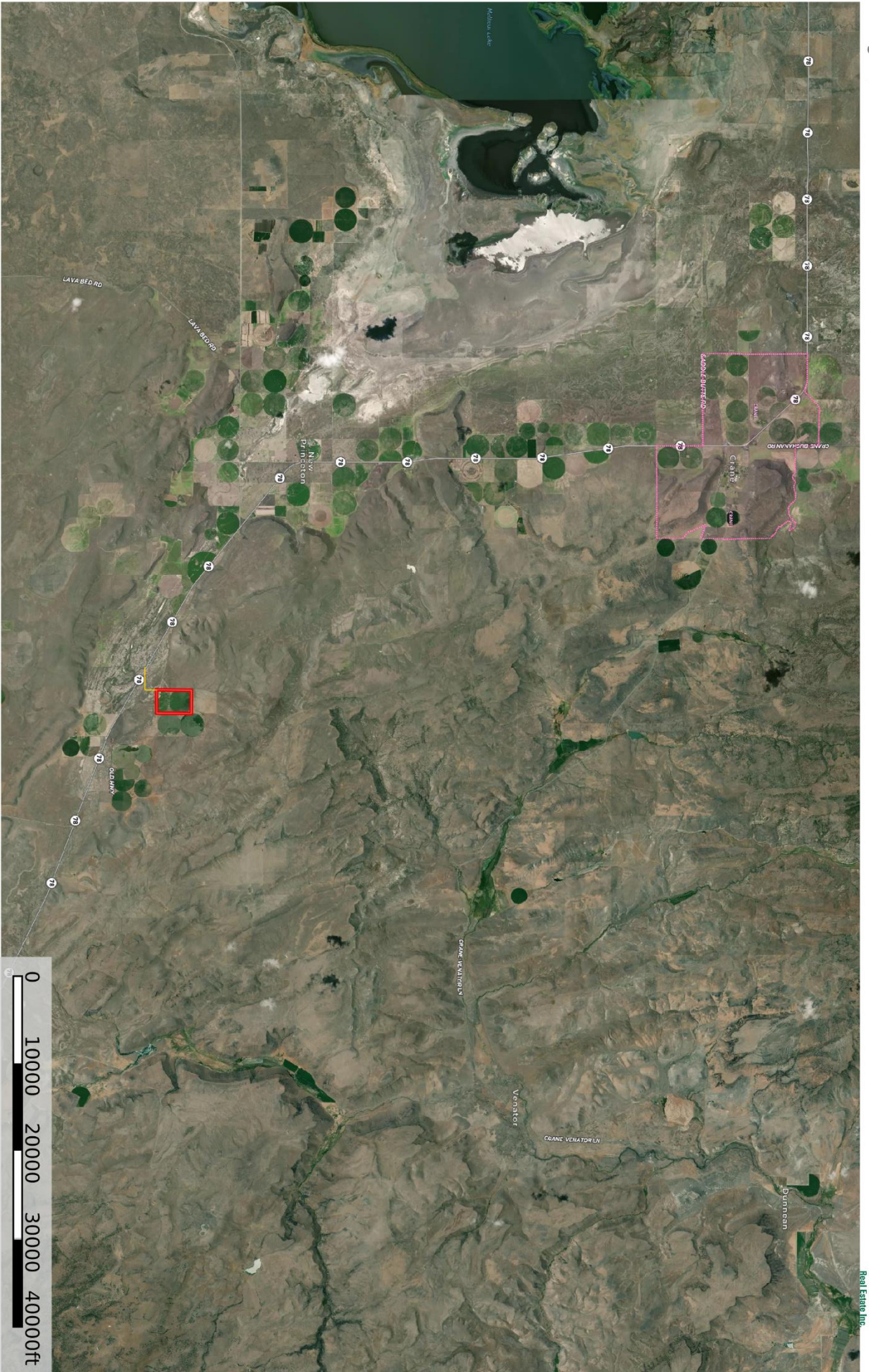
- Well
- Fence
- Primary Road
- Boundary
- Pivot

Curt Blackburn
P: 541-573-7206

office@jettblackburn.com

707 Ponderosa Village, Burns, OR 97720

M The information contained herein was obtained from sources deemed to be reliable. MapRight Services makes no warranties or guarantees as to the completeness or accuracy thereof.



Primary Road

Boundary

Curt Blackburn
P: 541-573-7206

office@jettblackburn.com

707 Ponderosa Village, Burns, OR 97720



M The information contained herein was obtained from sources deemed to be reliable. MapRight Services makes no warranties or guarantees as to the completeness or accuracy thereof.