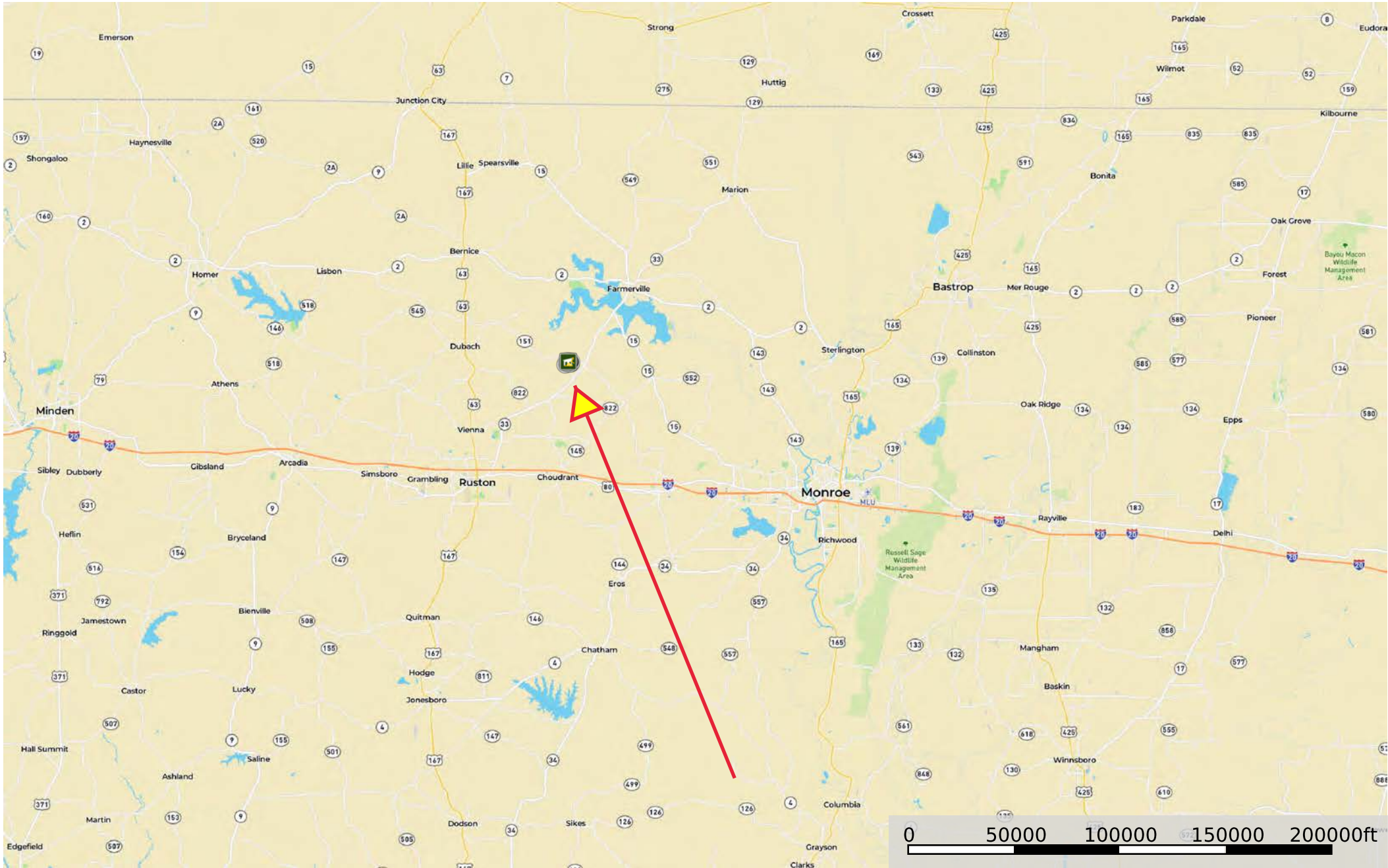
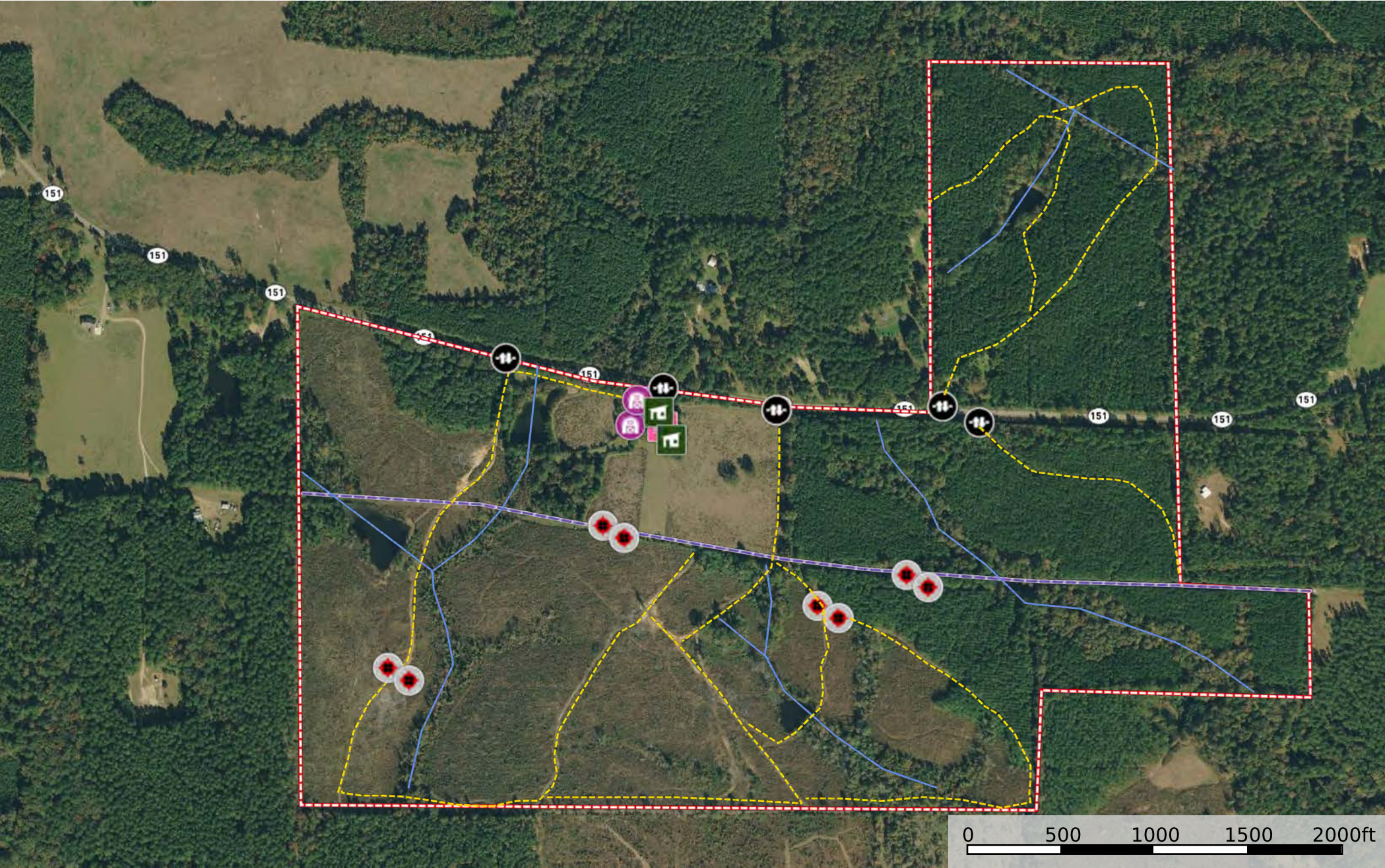


Revels 295  
Louisiana, AC +/-



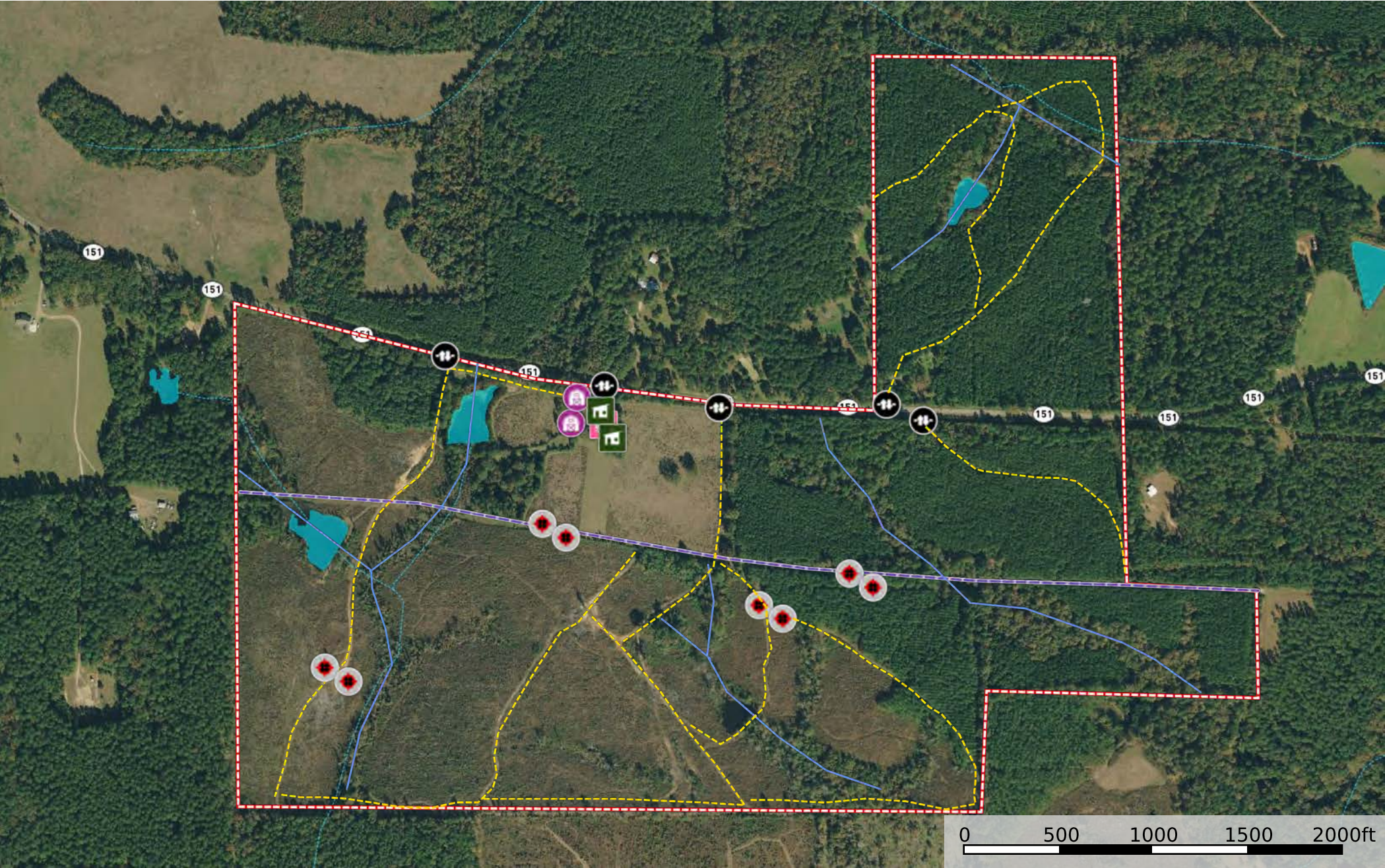
- Shed / Shack
- Barn
- Cabin
- Gate
- Blind
- Primary Road
- River / Creek
- Pipeline
- Road / Trail
- Boundary












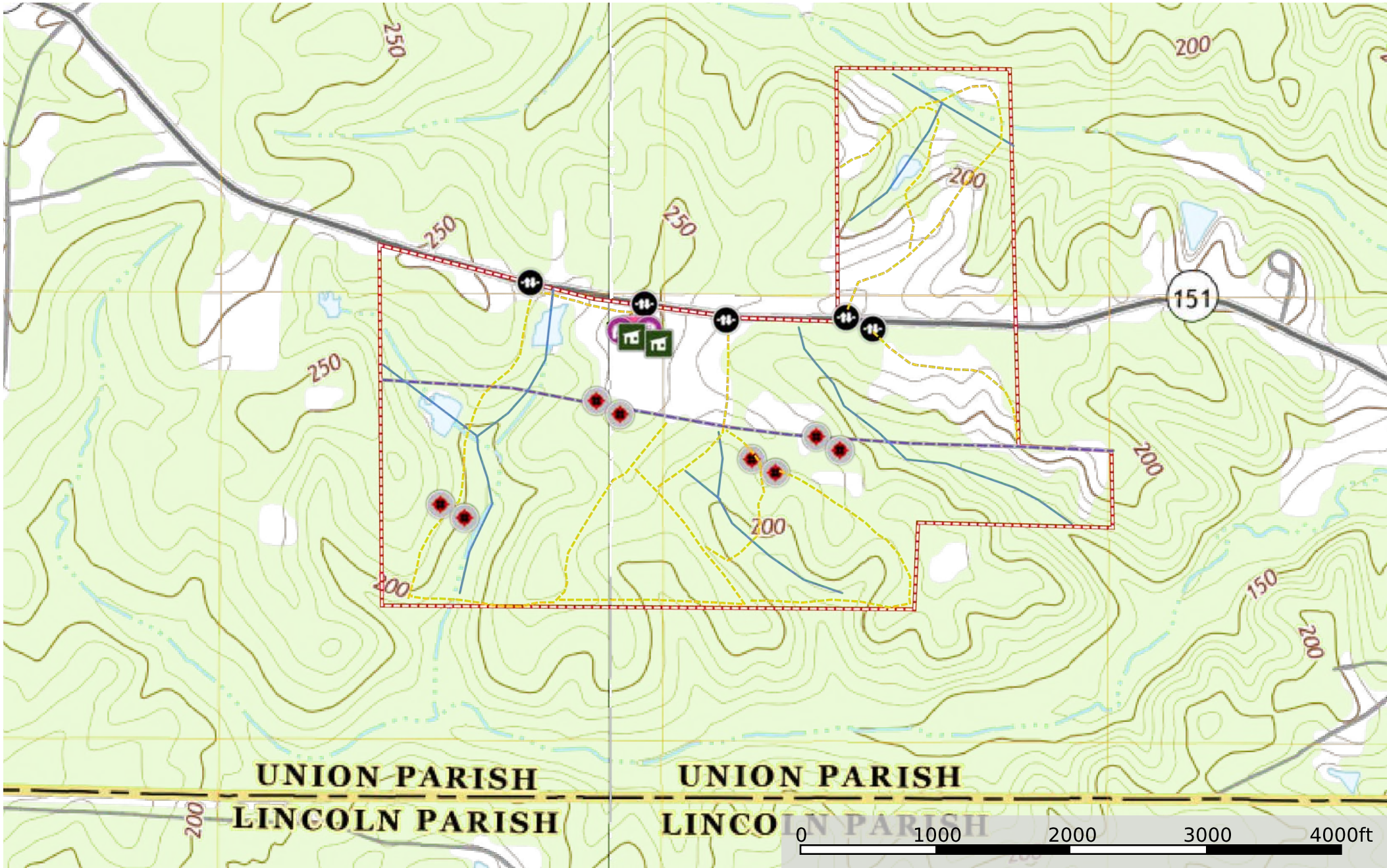
- Shed / Shack
- Barn
- Cabin
- Gate
- Blind
- Primary Road
- River / Creek
- Pipeline
- Road / Trail
- Boundary







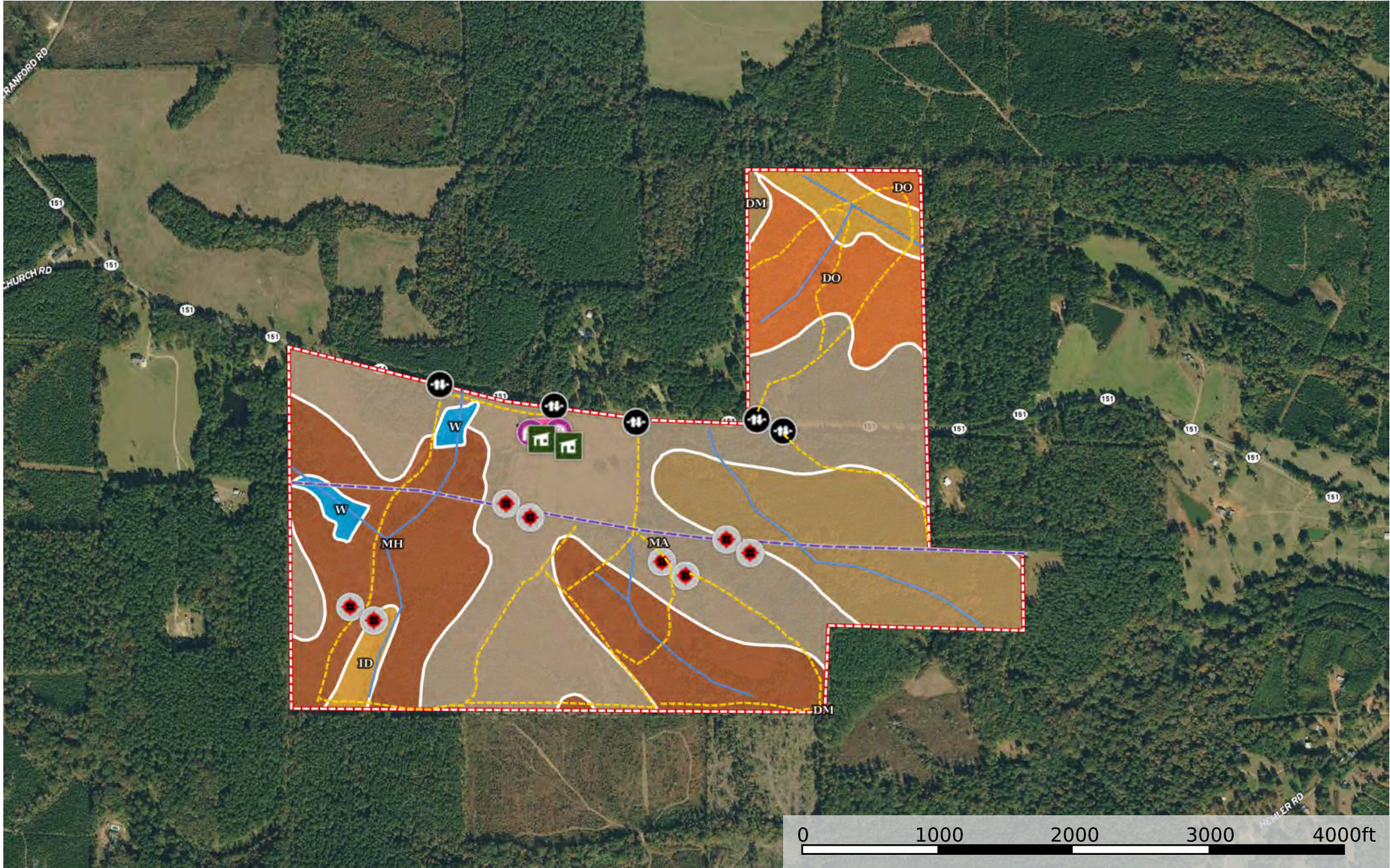
-  Shed / Shack
-  Barn
-  Cabin
-  Gate
-  Blind
-  Primary Road
-  River / Creek
-  Pipeline
-  Road / Trail
-  Boundary
-  Stream,  
Intermittent
-  River/Creek
-  Water Body





 Shed / Shack  Barn  Cabin  Gate  Blind  Primary Road  River / Creek  Pipeline  Road / Trail  Boundary





Shed / Shack Barn Cabin Gate Blind Primary Road River / Creek Pipeline Road / Trail Boundary



## Boundary 296.69 ac

SOIL CODE	SOIL DESCRIPTION	ACRES	%	CPI	NCCPI	CAP
Ma	Mahan fine sandy loam, 1 to 5 percent slopes	131.04	44.17	0	74	3e
MH	Mahan fine sandy loam, 5 to 12 percent slopes	75.48	25.44	0	73	6e
DM	Darley gravelly fine sandy loam, 5 to 12 percent slopes	45.97	15.49	0	51	6e
DO	Darley gravelly fine sandy loam, 12 to 30 percent slope s	27.29	9.2	0	55	6e
ID	Iuka-Dela complex, 0 to 1 percent slopes, frequently flooded	12.99	4.38	0	65	2w
W	Water	3.92	1.32	0	-	-
TOTALS		296.69(*)	100%	-	67.06	4.48









(\*) Total acres may differ in the second decimal compared to the sum of each acreage soil. This is due to a round error because we only show the acres of each soil with two decimal.

### Capability Legend

Increased Limitations and Hazards

Decreased Adaptability and Freedom of Choice Users

Land, Capability

								
	1	2	3	4	5	6	7	8
'Wild Life'	•	•	•	•	•	•	•	•
Forestry	•	•	•	•	•	•	•	
Limited	•	•	•	•	•	•	•	
Moderate	•	•	•	•	•	•		
Intense	•	•	•	•	•			
Limited	•	•	•	•				
Moderate	•	•	•					
Intense	•	•						
Very Intense	•							

### Grazing Cultivation

(c) climatic limitations (e) susceptibility to erosion

(s) soil limitations within the rooting zone (w) excess of water