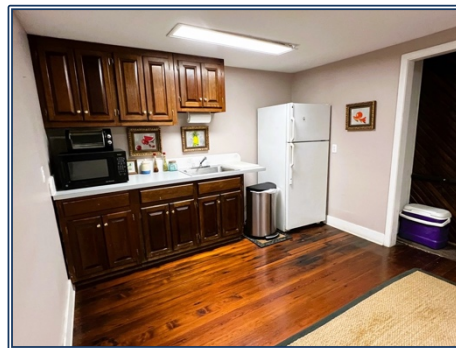
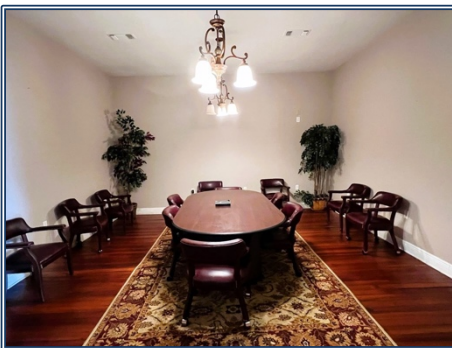
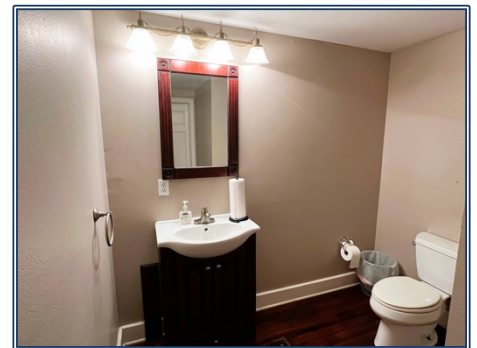
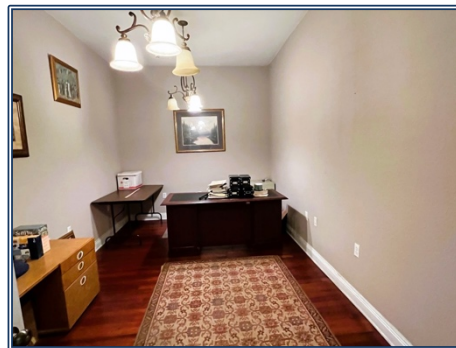
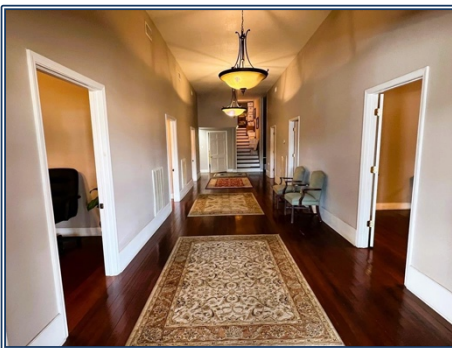




Located across from the Amite County, MS Courthouse, this historic office built in 1902 provides high visibility, easy access and classic beauty! Dual entry to the building opens to a spacious reception/waiting area that spans the full width of the building. Down the wide hallway are individual offices & a conference room. In addition, there is a large office/library, mechanical room, kitchen & two half baths. Upstairs storage includes numerous file cabinets that will be included in the sale. Additionally, the building features a Duro-Last membrane roof that was installed in 2007. Call today to set up a time to come view this incredible property!

210 West Main Street, Liberty, MS

31.158223, -90.810188 GPS



**\$299,000**

0.13 Acres  
MLS #137666  
UC #23042-37666



**Stuart Hemphill**  
stuarthemphill58@gmail.com  
Office: (601) 250-0017  
Cell: (601) 248-7637  
SouthernStatesRealty.com