

Silver Creek Ranch

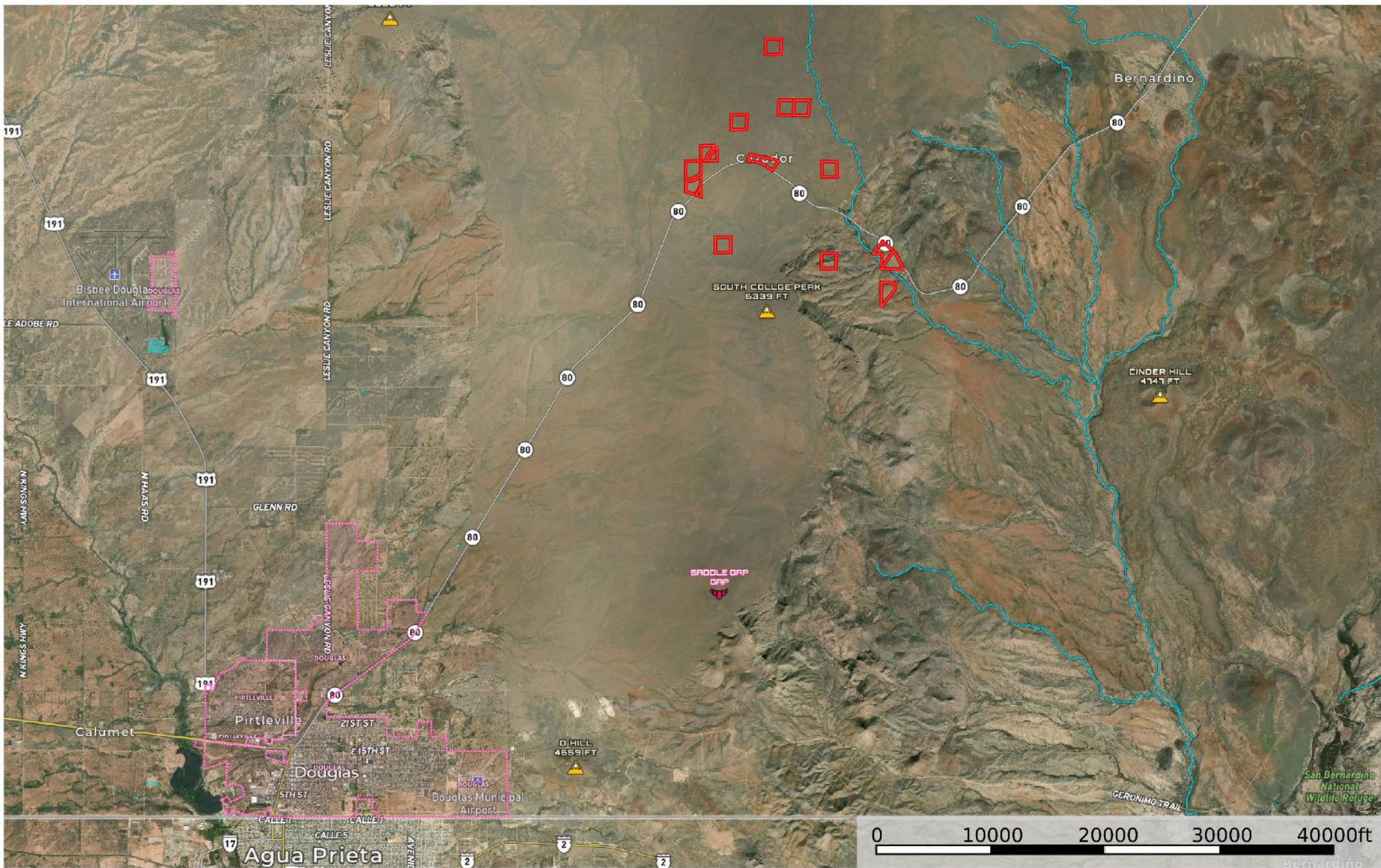
ONLINE REAL ESTATE AUCTION

Bidding Ends November 30th at 6:00 PM (AZ Time)

These parcels were sold in the ONLINE AUCTION ending on November 30, 2022 and closed escrow at their corresponding sale prices.

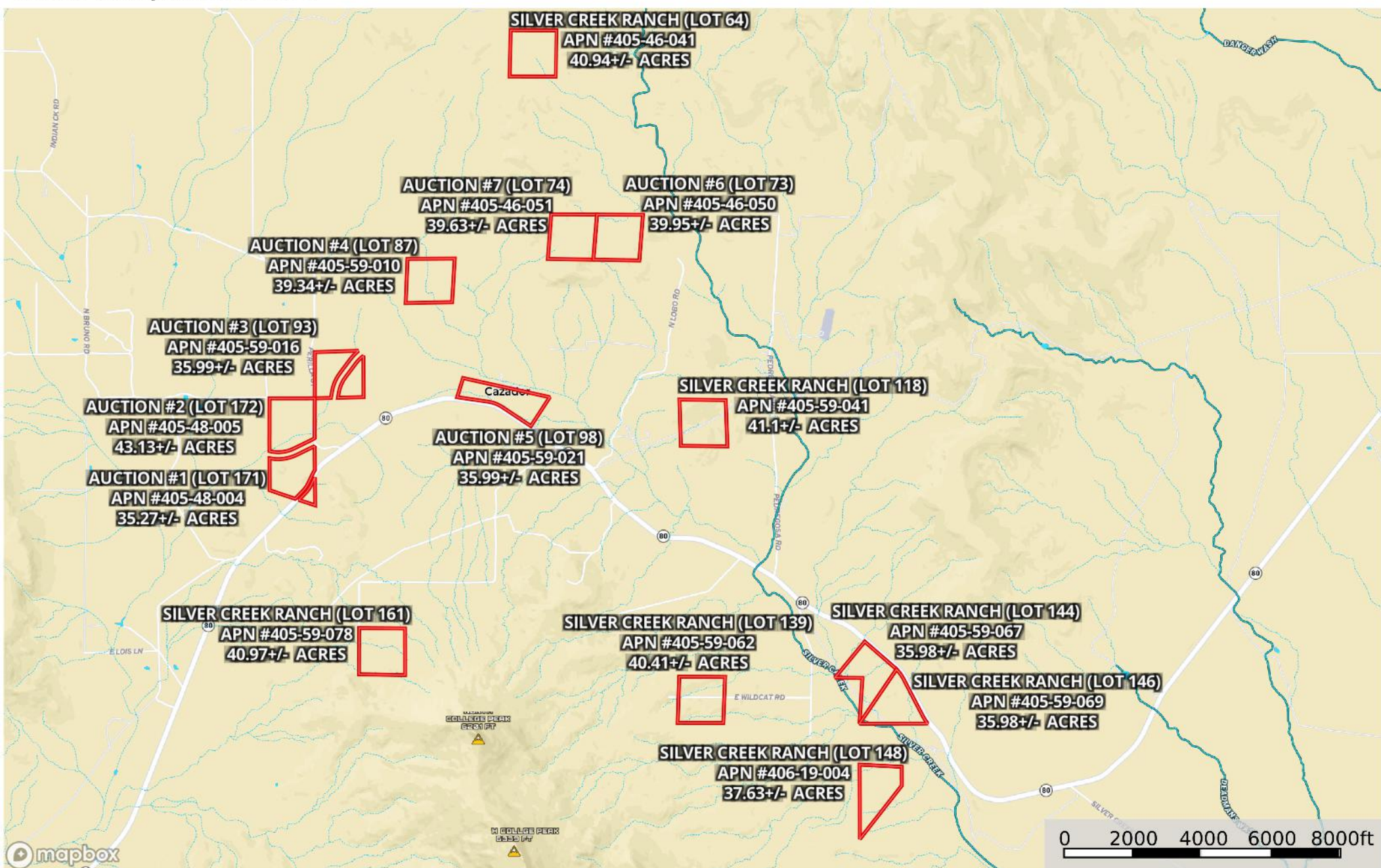
- AUCTION LOT #1: 35.27+/- acres. Assessor Parcel Number 405-48-004.
Silver Creek Ranch Lot 171. Annual tax assessment \$406.
Closed for \$14,300 on December 20, 2022.
- AUCTION LOT #2: 43.13+/- acres. Assessor Parcel Number 405-48-005.
Silver Creek Ranch Lot 172. Annual tax assessment \$324.
Closed for \$17,325 on December 20, 2022.
- AUCTION LOT #3: 35.99+/- acres. Assessor Parcel Number 405-59-016.
Silver Creek Ranch Lot 93. Annual tax assessment \$292.
Closed for \$12,650 on December 20, 2022.
- AUCTION LOT #4: 39.34+/- acres. Assessor Parcel Number 405-59-010.
Silver Creek Ranch Lot 87. Annual tax assessment \$360.
Closed for \$15,125 on December 20, 2022.
- AUCTION LOT #5: 35.99+/- acres. Assessor Parcel Number 405-59-021.
Silver Creek Ranch Lot 98. Annual tax assessment \$365.
Closed for \$14,850 on January 4, 2023.
- AUCTION LOT #6: 39.95+/- acres. Assessor Parcel Number 405-46-050.
Silver Creek Ranch, Lot 73. Annual tax assessment \$324.
Closed for \$12,3750 on December 20, 2022.
- AUCTION LOT #7: 39.63+/- acres. Assessor Parcel Number 405-46-051.
Silver Creek Ranch, Lot 74. Annual tax assessment \$324.
This parcel has an address of 4455 E Hummingbird Rd, Douglas, AZ 85607.
Closed for \$11,150 on December 20, 2022.

LEGACY GLOBAL FOUNDATION
Cochise County, Arizona, AC +/-



LEGACY GLOBAL FOUNDATION

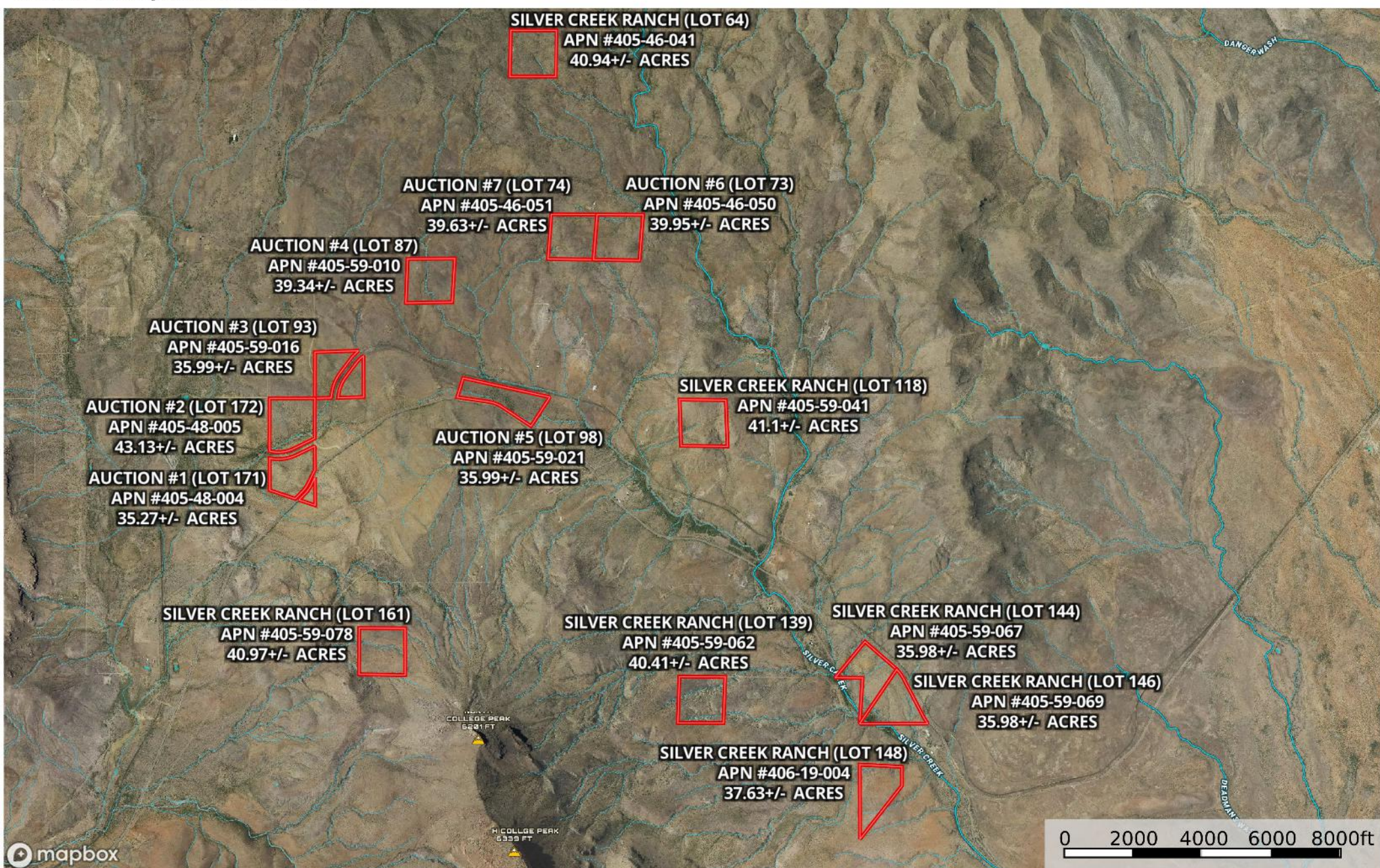
Cochise County, Arizona, AC +/-



Boundary Stream, Intermittent River/Creek Water Body

LEGACY GLOBAL FOUNDATION

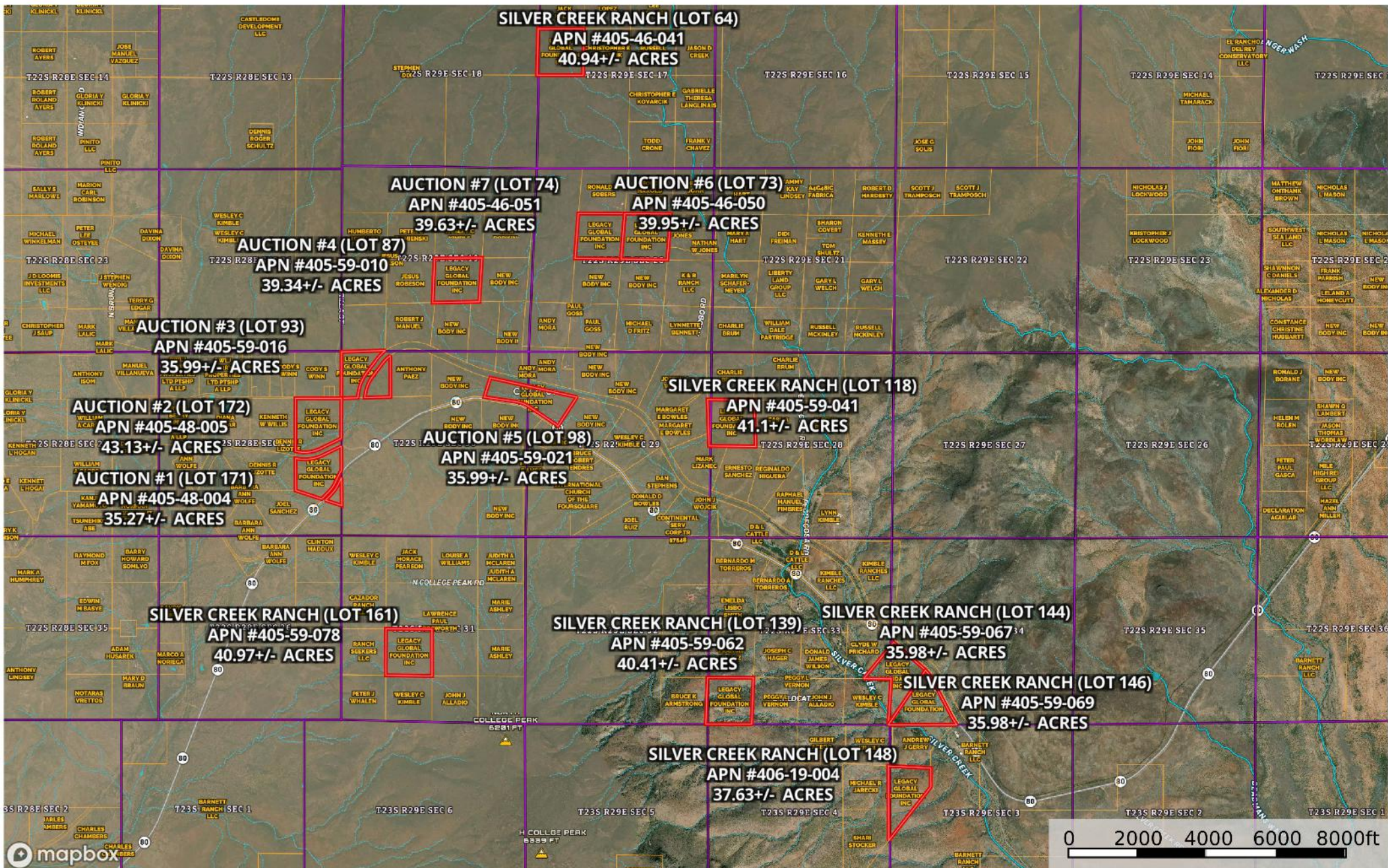
Cochise County, Arizona, AC +/-



Boundary Stream, Intermittent River/Creek Water Body

LEGACY GLOBAL FOUNDATION

Cochise County, Arizona, AC +/-



Boundary Stream, Intermittent River/Creek Water Body

LEGACY GLOBAL FOUNDATION

Cochise County, Arizona, AC +/-

