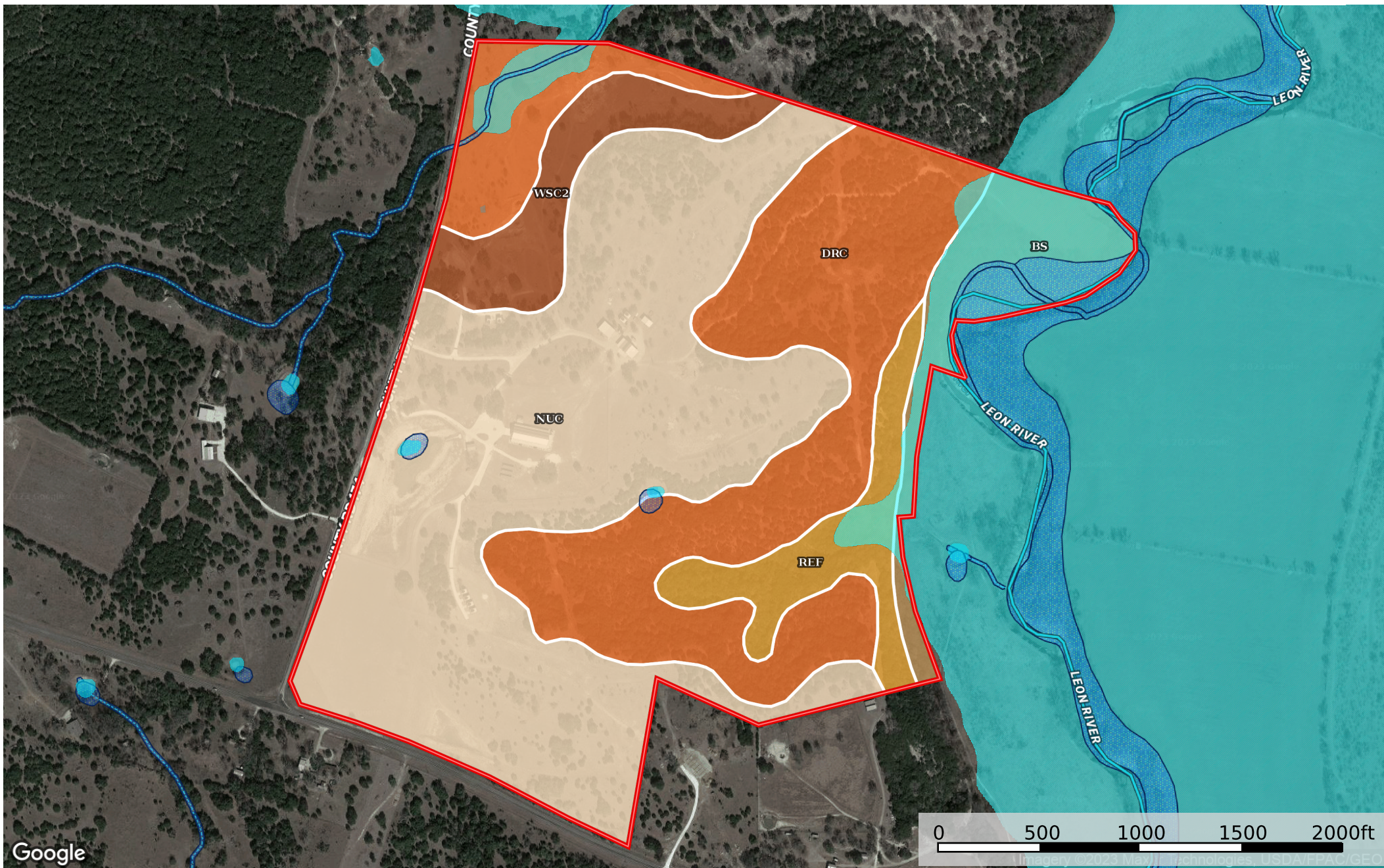


Harvey Ranch - 410 CR 174, Gatesville TX
Coryell County, Texas, 215 AC +/-



- Pond / Tank
- Boundary
- 100 Year Floodplain
- 500 Year Floodplain
- Floodway
- Special
- Unmapped/ Not Included
- Wetlands
- Riparian
- Stream, Intermittent
- River/Creek
- Water Body

|  Boundary 216.31 ac

SOIL CODE	SOIL DESCRIPTION	ACRES	%	CPI	NCCPI	CAP
NuC	Nuff very stony silty clay loam, 2 to 6 percent slopes	106.9 1	49.42	0	28	6s
DrC	Doss-Real complex, 1 to 8 percent slopes	67.14	31.04	0	23	6e
Bs	Bosque clay loam, 0 to 1 percent slopes, occasionally flooded	15.6	7.21	0	59	2w
WsC2	Wise clay loam, 3 to 5 percent slopes, moderately eroded	13.6	6.29	0	28	3e
ReF	Real-Rock outcrop complex, 12 to 40 percent slopes	13.06	6.04	0	9	7s
TOTALS		216.3 1(*)	100%	-	27.54	5.58









(*) Total acres may differ in the second decimal compared to the sum of each acreage soil. This is due to a round error because we only show the acres of each soil with two decimal.

Capability Legend

Increased Limitations and Hazards

Decreased Adaptability and Freedom of Choice Users

Land, Capability

								
	1	2	3	4	5	6	7	8
'Wild Life'	•	•	•	•	•	•	•	•
Forestry	•	•	•	•	•	•	•	
Limited	•	•	•	•	•	•	•	
Moderate	•	•	•	•	•	•		
Intense	•	•	•	•	•			
Limited	•	•	•	•				
Moderate	•	•	•					
Intense	•	•						
Very Intense	•							

Grazing Cultivation

(c) climatic limitations (e) susceptibility to erosion

(s) soil limitations within the rooting zone (w) excess of water