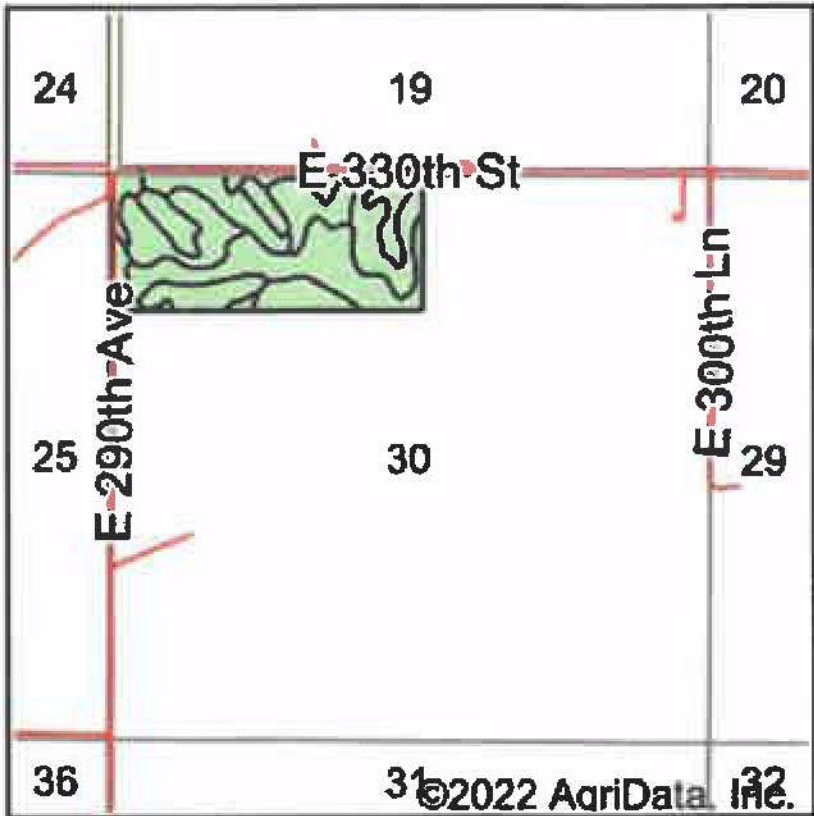
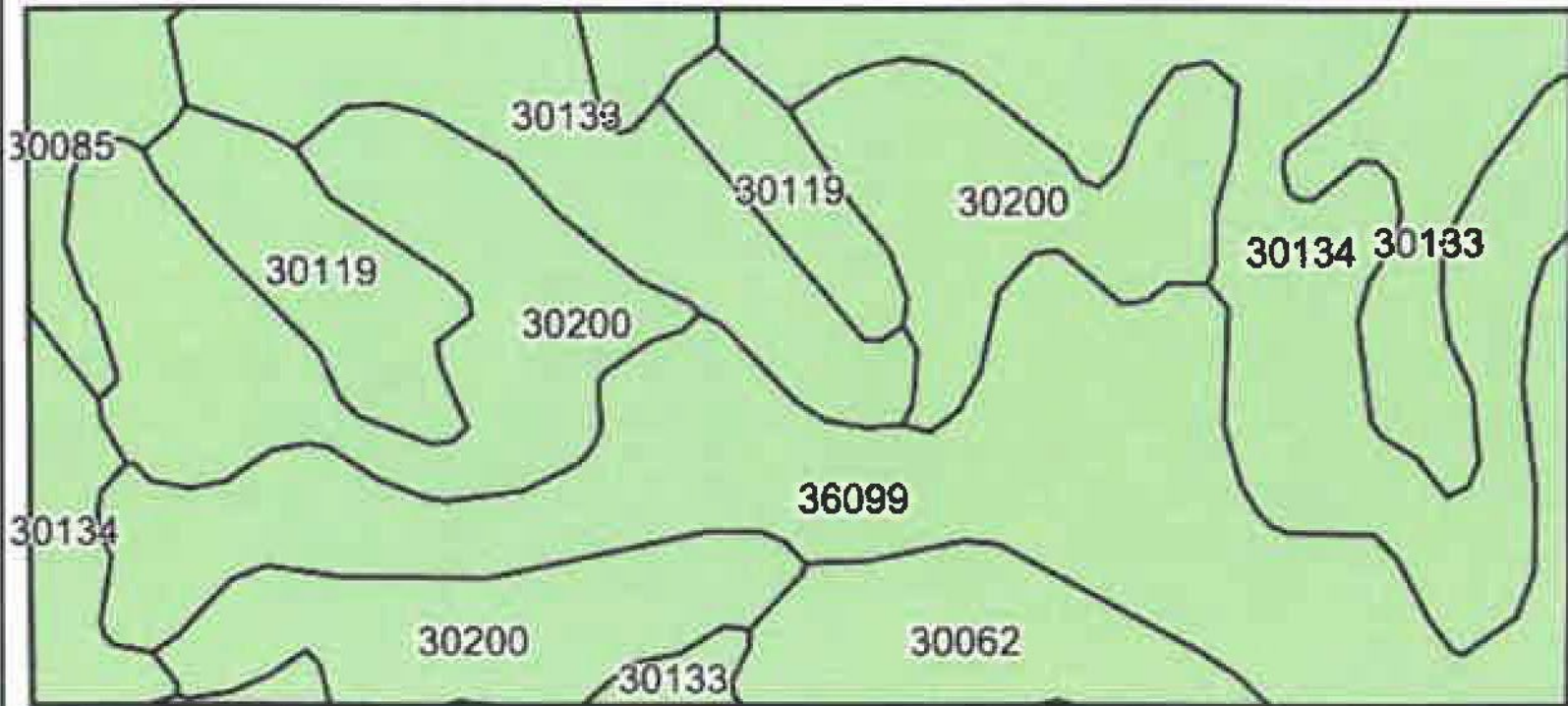


Soils Map



State: **Missouri**  
County: **Harrison**  
Location: **30-63N-26W**  
Township: **Fox Creek**  
Acres: **88.29**  
Date: **11/18/2022**



Soils data provided by USDA and NRCS.

Area Symbol: MO081, Soil Area Version: 26								
Code	Soil Description	Acres	Percent of field	Non-Irr Class *c	Common bermudagrass Tons	Orchardgrass red clover Tons	Tall fescue Tons	Warm season grasses Tons
30200	Shelby loam, 9 to 14 percent slopes	22.77	25.8%	IIle				
36099	Zook-Colo silty clay loams, 1 to 3 percent slopes, frequently flooded	20.95	23.7%	IIIw	8	7	8	9
30134	Lamoni clay loam, 5 to 9 percent slopes, severely eroded	16.34	18.5%	VIle				
30133	Lamoni clay loam, 5 to 9 percent slopes, eroded	13.69	15.5%	IIle				
30119	Lagonda silty clay loam, 2 to 5 percent slopes, eroded	6.07	6.9%	IIle				
30062	Gara loam, 9 to 14 percent slopes	4.91	5.6%	IVe				
30085	Grundy silt loam, 2 to 5 percent slopes	3.56	4.0%	Ile				
Weighted Average				3.57	1.9	1.7	1.9	2.1

\*c: Using Capabilities Class Dominant Condition Aggregation Method