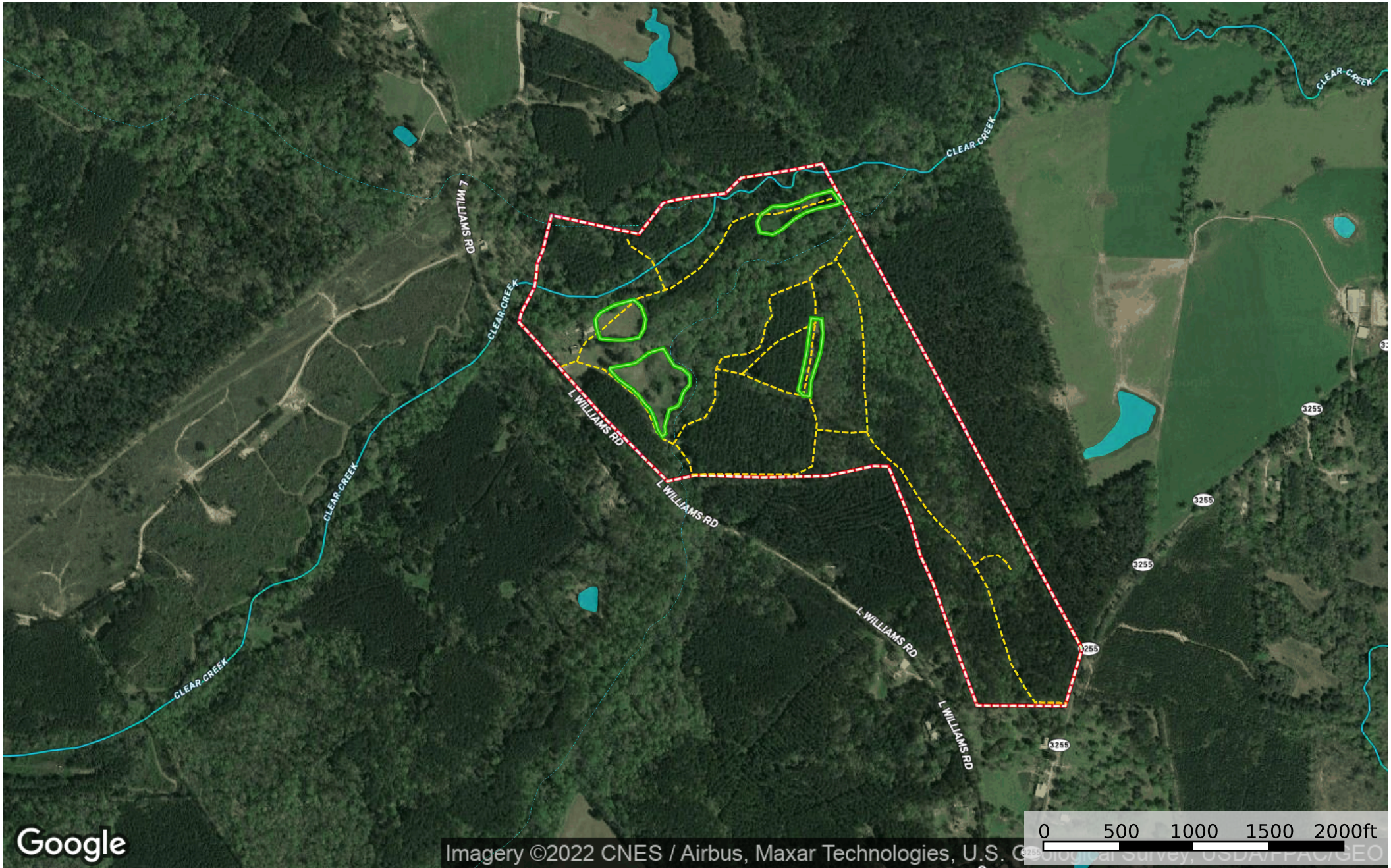
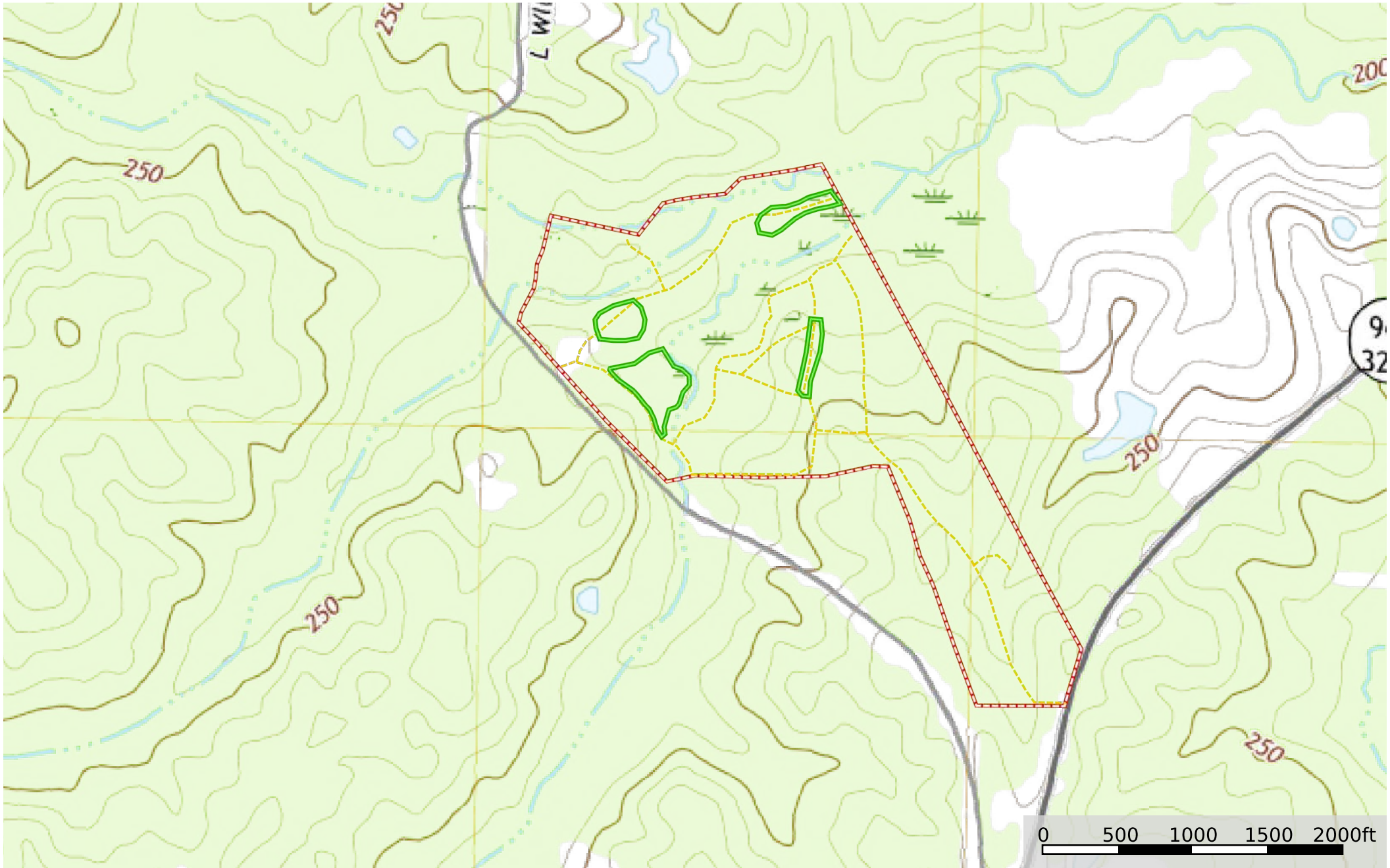


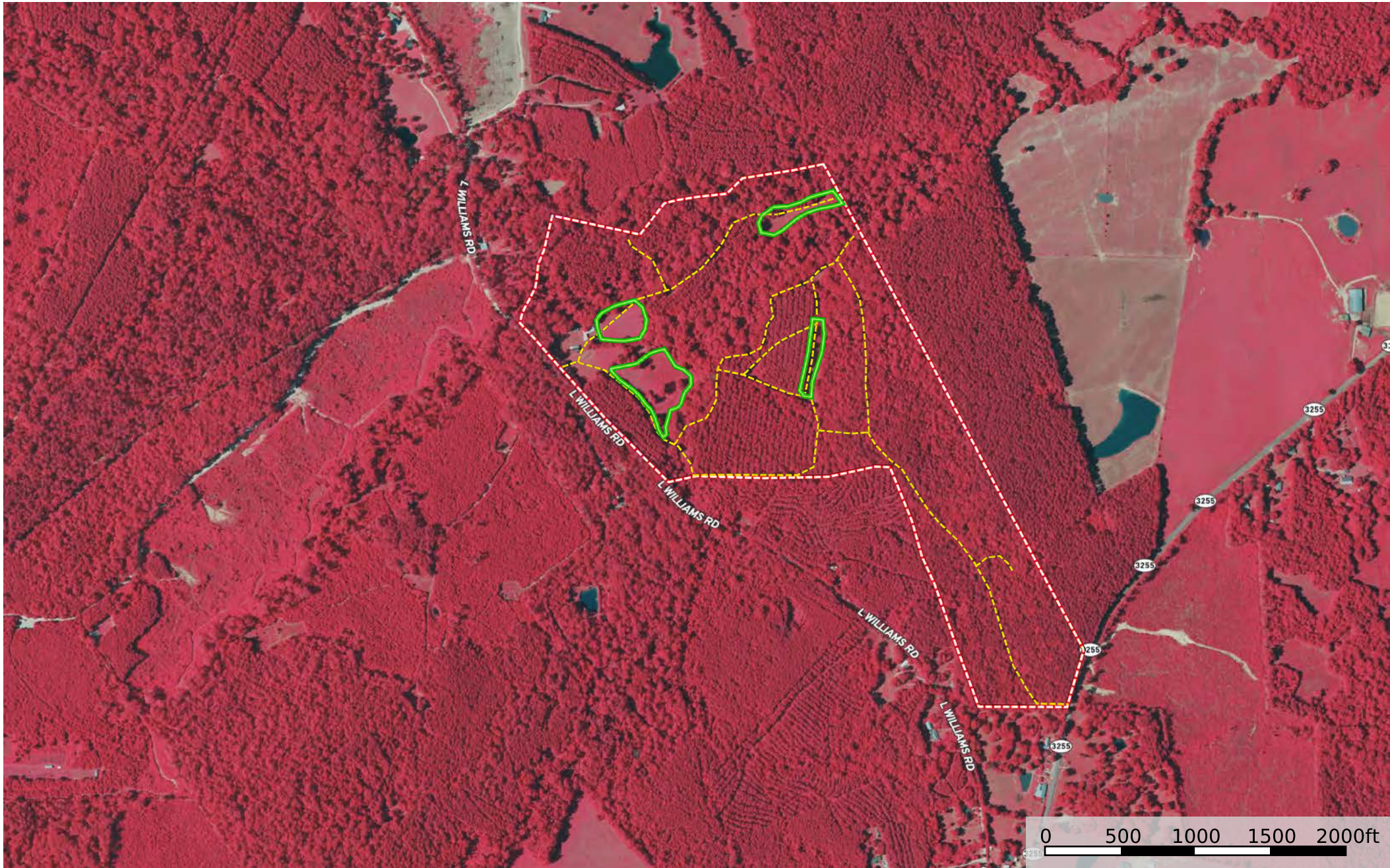
--- Road / Trail □ Boundary □ Boundary



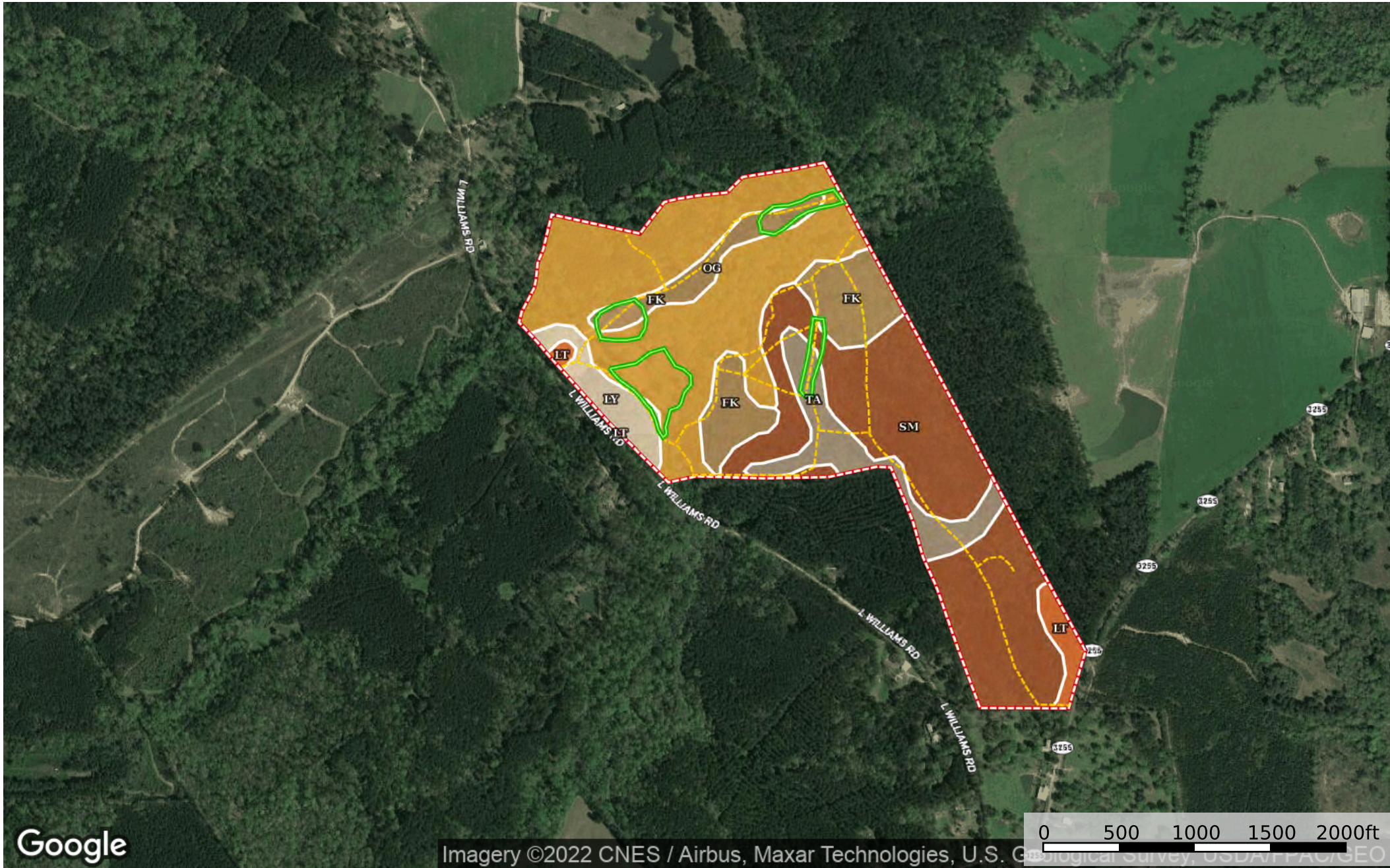
- Road / Trail
- Boundary
- Boundary
- Stream, Intermittent
- River/Creek
- Water Body





--- Road / Trail □ Boundary □ Boundary



--- Road / Trail □ Boundary □ Boundary



--- Road / Trail  Boundary  Boundary

Boundary 123.76 ac

SOIL CODE	SOIL DESCRIPTION	ACRES	%	CPI	NCCPI	CAP
OG	Ouachita, Ochlockonee and Guyton soils, 0 to 3 percent slopes, frequently flooded	45.19	36.51	0	59	4w
SM	Smithdale sandy loam, 8 to 30 percent slopes	43.05	34.78	0	51	7e
Fk	Fluker silt loam, 0 to 2 percent slopes	17.3	13.98	0	45	2w
Ta	Tangi silt loam, 1 to 3 percent slopes	9.87	7.97	0	51	2e
Ly	Lytle silt loam, 3 to 8 percent slopes	5.34	4.31	0	64	3e
Lt	Lytle silt loam, 1 to 3 percent slopes	3.01	2.43	0	64	2e
TOTALS		123.77(*)	100%	-	53.96	4.51

(*) Total acres may differ in the second decimal compared to the sum of each acreage soil. This is due to a round error because we only show the acres of each soil with two decimal.

Capability Legend

Increased Limitations and Hazards

Decreased Adaptability and Freedom of Choice Users

Land, Capability

	1	2	3	4	5	6	7	8
'Wild Life'	•	•	•	•	•	•	•	•
Forestry	•	•	•	•	•	•	•	
Limited	•	•	•	•	•	•	•	
Moderate	•	•	•	•	•	•		
Intense	•	•	•	•	•			
Limited	•	•	•	•				
Moderate	•	•	•					
Intense	•	•						
Very Intense	•							

Grazing Cultivation

(c) climatic limitations (e) susceptibility to erosion

(s) soil limitations within the rooting zone (w) excess of water