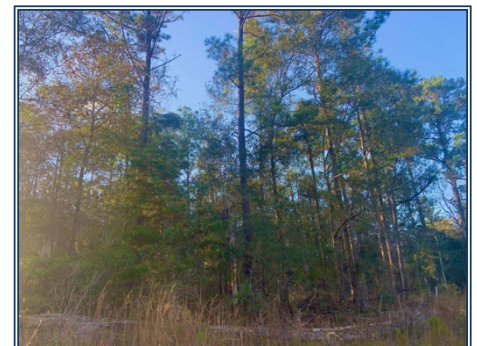
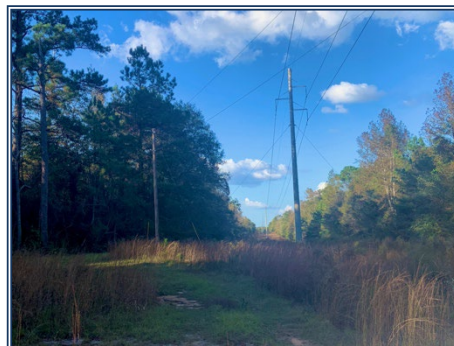
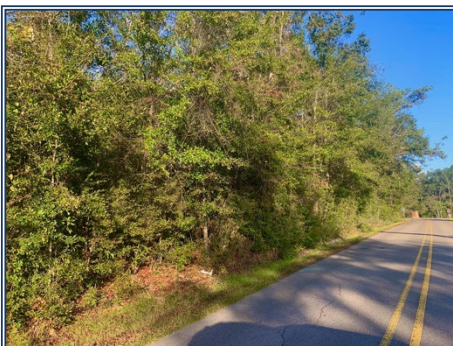
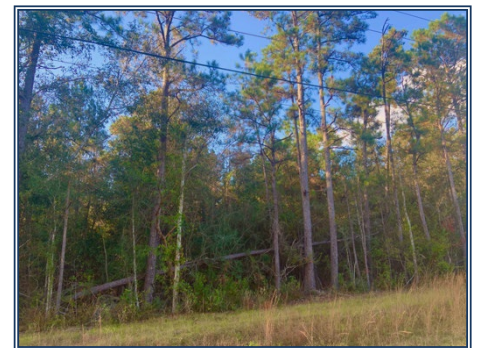
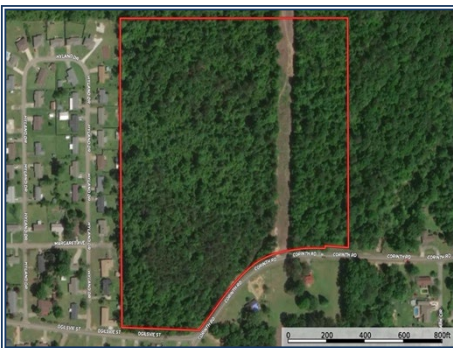




Land for sale in the ever-growing Petal, MS. With a quarter mile of road frontage and neighboring existing subdivisions, this 35 acre +/- residential development tract has the potential to be what developers are looking in developing multiple homesites in Petal School district. Or, if you're a single family looking for enough space to fill separated but with all the amenities that go along with the benefits of the city then look no further.

Corinth Road, Petal, MS

31.336324, -89.244046 GPS



\$165,000

35 Acres
MLS #131530
UC #23042-31530



Cole Pierce

pierceforestry@gmail.com
Office: (601) 250-0017
Cell: (601) 270-5262
SouthernStatesRealty.com